

Financial Year 2021-2022

Based on Lifecycle assessment data produced by Lifecycles.



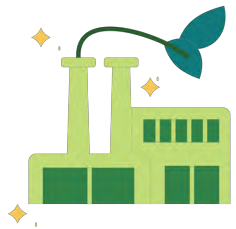
EPSON
EXCEED YOUR VISION

ENVIRONMENTAL IMPACT

EACH YEAR, ANZRP
ENGAGES AN
INDEPENDENT
CONSULTANT TO
PERFORM A LIFECYCLE
ASSESSMENT OF THE
ENVIRONMENTAL
IMPACT OF ITS
NATIONAL E-WASTE
COLLECTION AND
RECYCLING SERVICE -
TECHCOLLECT.



LAST FINANCIAL YEAR, TECHCOLLECT RECYCLED
21,454 TONNES OF E-WASTE.
FROM A SUSTAINABILITY PERSPECTIVE, THIS
TRANSLATES TO THE FOLLOWING BENEFITS:



PREVENTED 31,474 TONNES OF CO_{2E}
FROM ENTERING THE ATMOSPHERE.
THIS IS EQUIVALENT TO PLANTING
472,103 TREES.



SAVED 407,890 GJ OF ENERGY. THIS IS
EQUIVALENT TO THE AVERAGE ANNUAL
ENERGY CONSUMPTION OF 3,114
AUSTRALIAN HOUSEHOLDS.



SAVED 55,781M³ OF WATER. THIS IS
EQUIVALENT TO THE AVERAGE ANNUAL
WATER USE OF 310 AUSTRALIAN
HOUSEHOLDS.

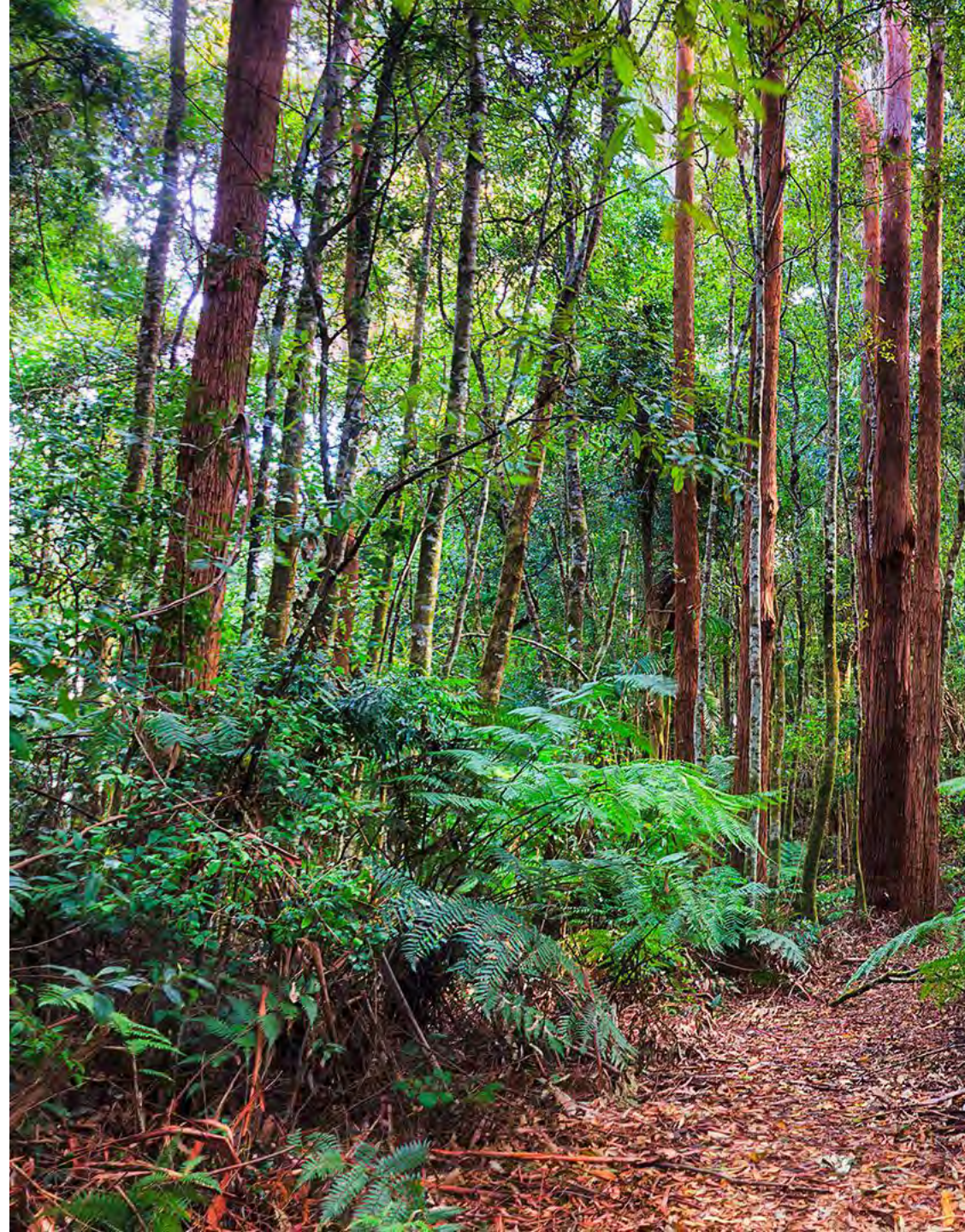


PREVENTED 53,700 KGS OF PARTICULATE
MATTER FROM ENTERING THE
ATMOSPHERE. THIS IS EQUIVALENT TO A
TRUCK DRIVING FROM PERTH TO SYDNEY
AND BACK 6,770 TIMES.

OF THE 21,454 TONNES OF E-WASTE RECYCLED, EPSON'S CONTRIBUTION WAS 1,972 TONNES THROUGH THE TECHCOLLECT PROGRAM AND 1.4 TONNES THROUGH EPSON'S INDIVIDUAL PRODUCER RESPONSIBILITY (IPR) PROGRAM.

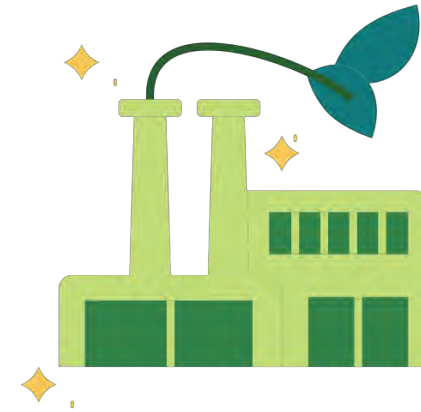
As the IPR volume was collected and recycled separately to the Techcollect program, it wasn't included in the lifecycle assessment and isn't included in the lifecycle environmental impact figures detailed below.

◦ This means...





BY RECYCLING ITS E-WASTE WITH TECHCOLLECT EPSON PREVENTED 2,678 TONNES IN CARBON EMISSIONS.



This is equivalent to planting 39,441 trees.¹

BY RECYCLING ITS E-WASTE
WITH TECHCOLLECT EPSON
HELPED SAVE 8,085 M³ OF
WATER.



This is equivalent to 23,665
days of household water use².



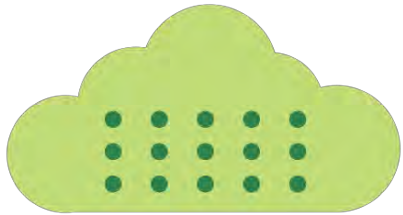


BY RECYCLING ITS E-WASTE
WITH TECHCOLLECT EPSON
HELPED SAVE 32,872 GJ OF
ENERGY.



This is equivalent of 96,631
days of household electricity
consumption³.

BY RECYCLING ITS E-WASTE WITH TECHCOLLECT EPSON PREVENTED 4,682 KG OF PARTICULATE MATTER FROM ENTERING THE ATMOSPHERE.



This is equivalent to the particulate matter emissions from 4,723,088 km of truck driving⁴.



—

THANK YOU
FOR SUPPORTING ANZRP
AND HELPING ACHIEVE A
POSITIVE IMPACT ON THE
ENVIRONMENT.



REFERENCES

1. Factor applied based on estimate of 15 trees storing 1 tonne CO₂e, as provided by Carbon Neutral™ (<https://carbonneutral.com.au/faqs/>)
2. Based on 338 litres per day and per Australian household in FY20, using Australian Bureau of Statistic data (Water Account)
3. Based on 125 GJ of annual energy per Australian household in FY20, using Australian Bureau of Statistic data (Energy Account)
4. Factor applied based on an EURO3 diesel truck emission as modelled in ecoinvent 3.5