

INKJET  
PRINTER

# EPSON STYLUS™ PHOTO 830U



amazing versatility and  
quality for high quality  
photograph and  
document printing

**EPSON®**

FOR HIGHEST QUALITY  
DEMAND EPSON  
INKS+PAPERS

PRINT  
Image™  
Matching

Exif Print

BORDER  
FREE

- 6-COLOUR PRINTING WITH INCREDIBLY FINE 4 PICOLITRE INK DROPLETS
- TRUE BORDERFREE\* EDGE-TO-EDGE PHOTO PRINTING
- FRONT/REAR USB PORT FOR HASSLE FREE COMPUTER CONNECTION
- UNIQUE EPSON PERFECTPICTURE IMAGING SYSTEM WITH MICROPIEZO TECHNOLOGY
- 5760 OPTIMISED DPI USING RPM TECHNOLOGY
- PHOTOS THAT STAND THE TEST OF TIME – OVER 25 YEARS LIGHTFASTNESS ON EPSON COLORLIFE PHOTO PAPER<sup>#</sup>
- PHOTOQUICKER 3.4 AND PRINT IMAGE FRAMER SOFTWARE FOR EASY PHOTO PRINTING
- PRINT IMAGE MATCHING™ II\*\* TECHNOLOGY



\*\*This product supports PRINT Image Matching and PRINT Image Matching II. When used in combination with PRINT Image Matching or PRINT Image Matching II enabled digital still cameras, the digital still camera's unique characteristics and design intentions are reflected in prints.

## Total Printing Versatility

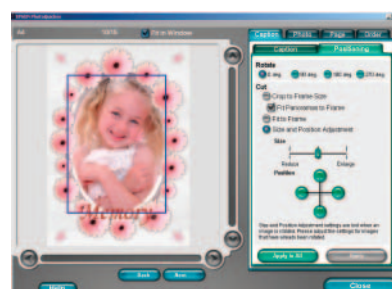
The incredible versatility of the EPSON STYLUS PHOTO 830U is evidenced in its high speed document printing capabilities combined with the world leading photo print quality, synonymous with the EPSON STYLUS PHOTO range of printers. A total printing solution in a single, powerful printer.

## Adding Power to the Desktop Photo Lab

With the EPSON STYLUS PHOTO 830U, affordable desktop photo lab functionality is taken to the next level. It's a level that delivers beautiful photo and document print results with the ease-of-use that is expected from the EPSON STYLUS PHOTO range of printers.

## EPSON PerfectPicture™ Imaging System

Only EPSON printers have the unique combination of technologies that combine to deliver the EPSON PerfectPicture Imaging System. At the heart of the System is the MicroPiezo™ printhead technology, delivering super fast ejection of accurately formed ink droplets at sizes as small as 4 picolitres.



## EPSON Software

Building on the highly successful and acclaimed EPSON STYLUS PHOTO printer drivers and software, the EPSON STYLUS PHOTO 830U is bundled with EPSON PhotoQuicker 3.4.

**PhotoQuicker 3.4** is a powerful and easy-to-use print utility, which makes photo printing in a variety of sizes and layouts extremely easy. This latest version of PhotoQuicker includes improved features such as:

- Red eye reduction
- Multiple display sizes
- Choose between PRINT Image Matching and Exif Print image data when printing your image

Also included is PRINT Image Framer (P.I.F.) and the new P.I.F. Designer software. P.I.F. allows you to quickly and easily give your photos an added professional touch with custom border frames or to incorporate your photos in a variety of greeting cards.

**P.I.F. Designer** allows you to modify existing P.I.F. templates or even create new templates from scratch.

Added to this is full support for Exif Print and PRINT Image Matching II technology, ensuring unrivalled colour consistency from PRINT Image Matching enabled digital cameras through to final photo print.



## BorderFree\* Edge-to-Edge Printing

High resolution photo printing with true BorderFree results – on all four sides and up to A4 size. Using a variety of different media, EPSON's incredibly powerful PhotoQuicker 3.4 makes borderless printing surprisingly easy. Just one more feature to make the EPSON STYLUS PHOTO 830U a desktop photo lab solution for the home.

## EPSON Genuine Papers and Inks



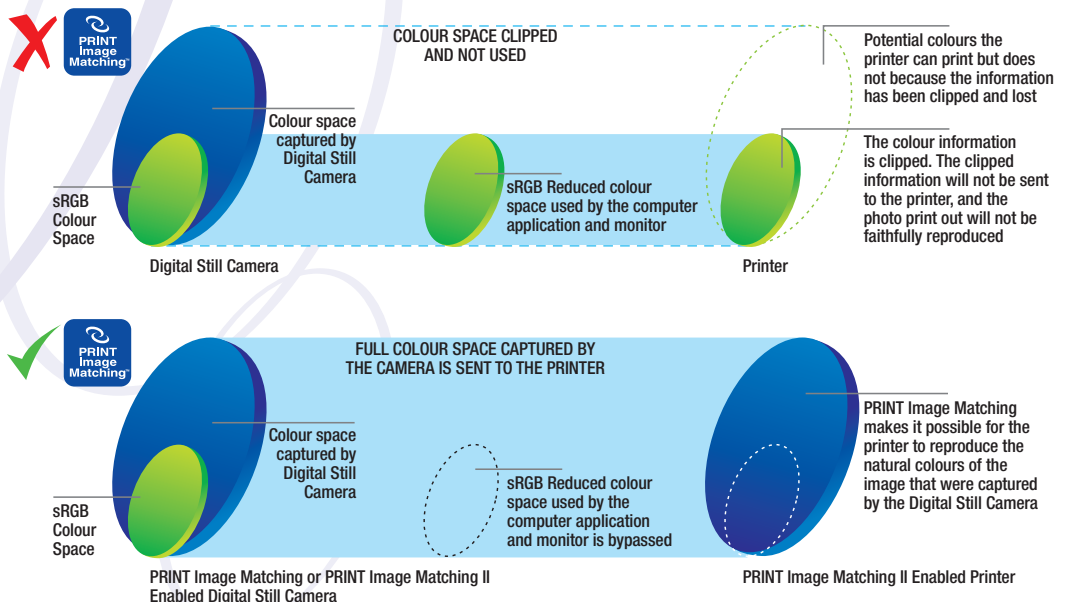
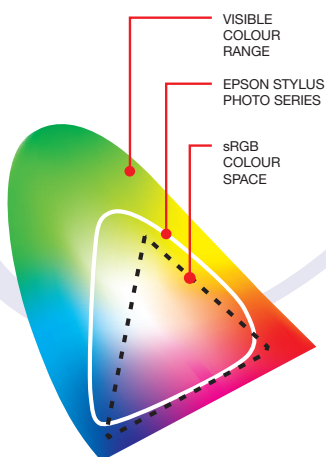
When your EPSON STYLUS PHOTO 830U is used in conjunction with EPSON Genuine Papers and the EPSON IntelliImage™ Ink System, the result is invariably output perfection. You can also rest assured that your photos will retain their colour and vibrancy for over 25 years\* when printed on EPSON ColorLife Photo Paper using genuine EPSON specialty inks.



# > EPSON STYLUS PHOTO 830U

## PRINT Image Matching II

With the EPSON STYLUS PHOTO 830U, photographers can now break free of the sRGB colour confines, thanks to PRINT Image Matching (P.I.M.). The colour space information captured by a P.I.M./P.I.M. II-enabled digital camera is utilised by the EPSON STYLUS PHOTO 830U, ensuring prints reflect the camera's unique characteristics and design intentions. The EPSON-developed P.I.M. technology allows digital cameras to set image and print parameters such as gamma, contrast, shadow, colour balance, noise reduction and custom scene settings, which can then be incorporated into automatic modes such as portrait, landscape, macro and sport. P.I.M. II extends the introduction of the original P.I.M. and adds additional features, allowing even more information to be transferred from the digital still camera to the EPSON STYLUS PHOTO 830U, for even richer printouts of digital images on EPSON printers.



**SYDNEY**  
3 Talavera Road  
North Ryde NSW 2113  
Tel: (02) 8899 3666  
Fax: (02) 8899 3777

**MELBOURNE**  
Ground Level  
1155 Malvern Road  
Malvern Vic 3144  
Tel: (03) 8823 9200  
Fax: (03) 8823 9250

**BRISBANE**  
Level 3, Waterfront Place  
1 Eagle Street  
Brisbane QLD 4000  
Tel: (07) 3360 0219  
Fax: (07) 3360 0289

**PERTH**  
Suite 20, Level 3  
1060 Hay Street  
West Perth WA 6005  
Tel: (08) 9480 0418  
Fax: (08) 9480 0443

**ADELAIDE**  
Level 1, Carrington House  
61-63 Carrington Street  
Adelaide SA 5000  
Tel: (08) 8237 0518  
Fax: (08) 8237 0519

**AUCKLAND**  
245 Hobson Street  
Auckland NZ  
Tel: (09) 366 6855  
Fax: (09) 366 6865

**WELLINGTON**  
Level 6, City Tower  
95 Custom House Quay  
Wellington NZ  
Tel: (04) 473 3494  
Fax: (04) 473 4631

ABN 91 002 625 783  
04/03

Visit our website:  
[www.epson.com.au](http://www.epson.com.au)  
[www.epson.co.nz](http://www.epson.co.nz)



**Exif Print**



**FOR HIGHEST QUALITY  
DEMAND EPSON  
INKS+PAPERS**

**EPSON®**

**INKJET  
PRINTER**

# EPSON STYLUS™ PHOTO 830U Specifications



<b>EPSON STYLUS PHOTO 830U</b>	C11C525061
<b>PRINTING METHOD</b>	On-demand Inkjet (piezoelectric)
<b>NOZZLE CONFIGURATION</b>	48 x 6 nozzles (Black, Cyan, Magenta, Yellow, Light Cyan, Light Magenta)

<b>PRINT SPEED</b>			
BLACK TEXT (MEMO) A4	Approx. 14 PPM (Economy)	★1	
COLOUR TEXT (MEMO) A4	Approx. 13.9 PPM (Economy)	★2	
TEXT & PHOTO A4	Approx. 3.1 PPM (Normal)	★3	
PHOTO A4	102 sec per photo (Fine)	★4	

\*"Second" rating refers to the time taken to print one page. "ppm" rating refers to the number of pages printed in one minute. The computer environment we test under is as follows: CPU: 1GHz Pentium III (Dell Dimension 4100); RAM: 128MB; OS: Windows ME; Interface: USB

<b>RESOLUTION</b>	5760 x 720 Optimised DPI using RPM Technology
-------------------	---

<b>PAPER HANDLING</b>	
<b>PAPER FEED METHOD</b>	Friction feed with paper feeder
<b>PAPER SIZES</b>	A6, A4, Letter, A5, B5, Legal, Index cards (5" x 8", 8" x 10"), Envelopes (No.10, DL, C6,132 x 220mm), Executive, Half Letter, Panoramic

<b>PAPER THICKNESS</b>	0.08mm ~ 0.11mm (Plain Bond Paper)
<b>WEIGHT</b>	64g/m <sup>2</sup> ~ 90g/m <sup>2</sup> (Plain Bond Paper)

<b>INTERFACES</b>	USB 1.1† (Works properly under USB 2.0 environment)
-------------------	---

<b>PRINTER SOFTWARE (ON CD-ROM)</b>	
-------------------------------------	--

<b>PRINTER DRIVERS</b>	Mac® OS 8.5.1 to 9.x with USB, Mac OS X Microsoft® Windows® 98/2000/Me/XP
------------------------	--

<b>ON-LINE GUIDE*</b>	
<b>EPSON PHOTOQUICKER*</b>	3.4
<b>EPSON PRINT IMAGE FRAMER*</b>	
<b>EPSON P.I.F. DESIGNER*</b>	

\* Windows/ Mac OS 8.6 to 9.x, Mac OS X 10.1.2 or later  
\* Windows/ Mac OS 8.6 to 9.x, Mac OS X 10.1.2 (Classic mode only)

<b>WARRANTY</b>	12 months return to base Optional Additional 2 Year Warranty	3YW830U
-----------------	---	---------

<b>ENVIRONMENTAL CONDITIONS (OPERATING)</b>	
---	--

<b>TEMPERATURE</b>	10 ~ 35°C
<b>HUMIDITY</b>	20 ~ 80% RH

<b>ELECTRICAL SPECIFICATIONS</b>	
----------------------------------	--

<b>RATED VOLTAGE</b>	AC 220 ~ 240V
<b>RATED FREQUENCY</b>	50 ~ 60 Hz
<b>POWER CONSUMPTION</b>	Approx. 18W (ISO 10561 Letter Pattern)

<b>LIGHTFASTNESS</b>	
----------------------	--

<b>LIGHTFASTNESS TEST CRITERIA (INDOOR DISPLAY CONDITIONS)</b>	
Light source	Fluorescent light
Intensity	70k lux
Temperature	24°C
Humidity	60% RH
Glass mount	2mm, soda lime
Fade criteria	Pure YMC 30% loss at OD=1
Display life calculation	Total illuminance/(500 lux x 10 hours x 365 days = 1 year)

Tests developed and conducted by EPSON under fluorescent light (indoor display condition) with glass mount. The data is calculated by EPSON's accelerated test of prints on specialty media. See [www.epson.com.au](http://www.epson.com.au) for more info.

# Data is calculated using accelerated simulation of fading under indoor preservation conditions including fluorescent light indoor display. Temperature, humidity and some atmospheric gases may also affect the rate of fading. The estimated lightfastness period does not indicate the colour changing or the durability of the paper itself. EPSON recommends that your prints be stored in a photo album (or plastic photo storage box) in acid free, archival sleeves commonly available from most camera shops.

\*True BorderFree printing is available for the following media sizes: A4, 5" x 8", 4" x 6", 100 x 150mm, 3.5" x 5", 5" x 7", Panoramic (210 x 594mm). Media types recommended: Photo paper, Matte paper heavyweight. True BorderFree printing does not support Photo RPM setting.

**Print Speed Data Printout Patterns** The thumbnail images below show the printout patterns used to determine print speed specifications.

★1	★2	★3	★4
Black Text (MEMO) A4	Colour Text (MEMO) A4	Text & Photo A4	Photo A4 (image 8"x10") (Photo courtesy of ISO/JIS-SCID. Reprinted by permission.)

† To use the USB port, your PC must conform to PC98 specifications, and have Windows® 98/2000/Me/XP preinstalled. Consult the documentation provided with your PC for further information about USB connectivity. Note also that printing errors may occur if non-standard cables or more than two hub connections are used.

## INK CARTRIDGES



### BLACK INK (T026)

BLACK INK CARTRIDGE (T026)  
PRINT CAPACITY  
540 pages, comparable with 3.5% ECMA  
(ISO 10561) text @ 360dpi  
370 pages, 5% in calculation



### COLOUR INK (T027)

COLOUR INK CARTRIDGE (T027)  
COLOURS  
Cyan, Magenta, Yellow, Light Cyan, Light Magenta  
PRINT CAPACITY  
220 pages, 5% each CoMmY  
(total 25%) by calculation

The EPSON Intelligence™ ink system is designed to work perfectly in harmony with the printer and your choice of media to ensure you get:

- the very best of print quality every print, every time
- and trouble-free, peace-of-mind printing every print, every time

The EPSON Intelligence™ ink system brings maximum benefits, maximum ink usage and the interchange of EPSON cartridges suitable for this model.

The EPSON Intelligence™ ink system gives you easy-to-see, always available and accurate information about all your ink levels.

**This printer is designed to be used only with Genuine EPSON Intelligence™ ink cartridges**

Intelligence™ ink cartridges are not designed for refill.

## GENUINE EPSON PRODUCTS

<b>INK CARTRIDGES</b>	BLACK INK CARTRIDGE COLOUR INK CARTRIDGE	T026 T027
<b>SPECIAL MEDIA</b>	EPSON PHOTO QUALITY INKJET PAPER (A4) EPSON PHOTO PAPER (A4) EPSON PHOTO PAPER (4" x 6") EPSON MATTE PAPER - HEAVYWEIGHT (A4) EPSON PREMIUM GLOSSY PHOTO PAPER (A4) EPSON INKJET TRANSPARENCIES (A4) EPSON PANORAMIC PHOTO PAPER (210 x 594mm) EPSON IRON-ON COOL PEEL TRANSFER PAPER (A4) EPSON COLORLIFE PHOTO PAPER (A4) EPSON PREMIUM GLOSSY PHOTO PAPER 100 X 150MM EPSON BRIGHT WHITE INKJET PAPER (A4) EPSON PREMIUM SEMIGLOSS PHOTO PAPER (A4) EPSON DOUBLE SIDED MATTE PAPER (A4)	S041061 S041140 S041134 S041258 S041285 S041063 S041145 S041154 S041560 S041706 S041142 S041332 S041569

## the four genuine facts

**save money**

**Non-genuine inks are not as cheap as you think.**

**achieve best quality output**

**Genuine EPSON inks and ink cartridges always ensure best quality.**

**problem free - works every time**

**Genuine EPSON inks are problem free - reliable and dependable.**

**printer damage protection**

**Don't take the risk with non-genuine inks, in or out of warranty.**

As an International ENERGY STAR Partner, EPSON has determined that this product meets the International ENERGY STAR guidelines for energy efficiency. EPSON is the registered trademark of SEIKO EPSON Corporation. EPSON STYLUS, PerfectPicture, MicroPiezo, AcuPhoto Halftoning, QuickDry are the trademarks of SEIKO EPSON Corporation. All other names and company names used herein are for identification purpose only and may be the trademarks or registered trademarks of their respective owners. EPSON disclaims any and all rights in those marks. All print samples shown herein are simulations. Specifications are subject to change without notice.