

EPSON
EXCEED YOUR VISION



Epson Stylus[®] Pro 4900 | Pro 7900 | Pro 9900
A New Generation of Large Format Printers



Stylus Pro 9900



Stylus Pro 7900



Stylus Pro 4900

Representing our next generation, the Epson Stylus® Pro 900 Series incorporates our latest achievements in photographic inkjet technology. By combining the precision of MicroPiezo® TFP print head with the extraordinary performance of Epson UltraChrome® HDR Ink, our newest generation of Epson Stylus® Pro printers continue to represent a level of technology unprecedented in Epson's history.

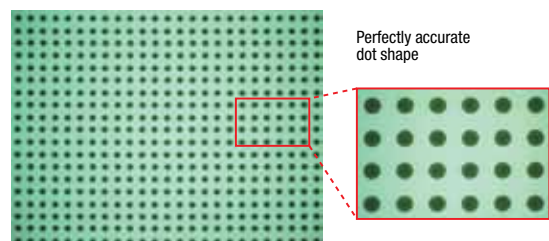
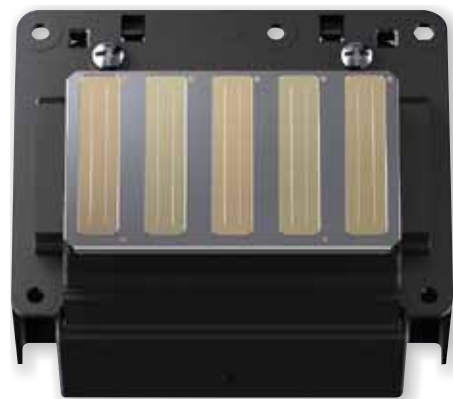
Image Quality

When it comes to image quality, the Epson Stylus® Pro family of large format printers has long been regarded as the global leader. With the introduction of the Epson Stylus® Pro 900 series, the standard for **quality output** has again raised the bar for others to follow. This is largely due to key technologies that include:

- Epson MicroPiezo® TFP Print Head Technology
- Variable Sized Droplet Technology
- 2880 x 1440 dpi resolution
- Advanced LUT (Look-Up Table) technology
- 1440 x 1440 dpi print mode

Building on the print head technology leadership established by Epson with the solid-state MicroPiezo® print head, the Epson Stylus® Pro 900 series features the **Epson MicroPiezo® TFP (Thin Film Piezo) print head**.

Featuring 10-channel print head technology, the new one-inch wide print head has a massive **360 nozzles per colour** (channel), delivering **twice the nozzle count** of earlier models and is therefore able to print at nearly **twice the speed**. Another advance made with the MicroPiezo® TFP print head is an ink-repelling coating, which **reduces clogging**. As a result, there is less printer down-time and cleaning requirements, all of which minimise running costs.



Variable Sized Droplet Technology

By controlling the electric pulse applied to the print head's Piezo element, the Epson Stylus® Pro 900 series **MicroPiezo® print head** is capable of producing several different sizes of ink droplets, depending on the image type and media used. This new generation of MicroPiezo® print head improves the Variable Sized Droplet function to **improve image quality whilst optimising print speed.**

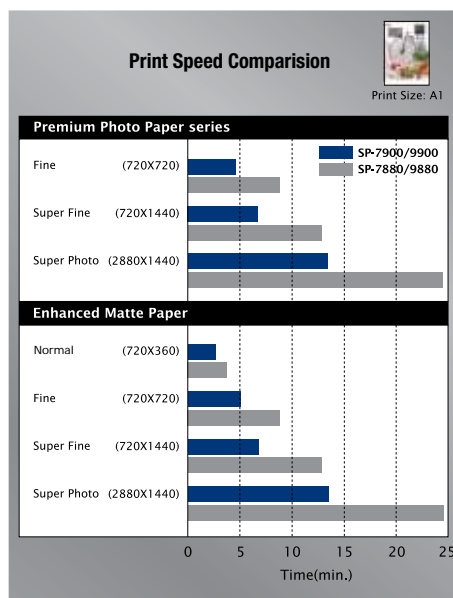
2880 x 1440 dpi Resolution

The Epson Stylus® Pro 900 series offers industry-leading output quality, with print resolution of up to 2880 x 1440 dpi. This is achieved as the result of technologies that include Variable Sized Droplet Technology, which supports ink droplets as small as 3.5pl, and Advanced Meniscus Control, which enables the printer to **deliver sharp, accurately placed spherical ink droplets with high levels of precision.**

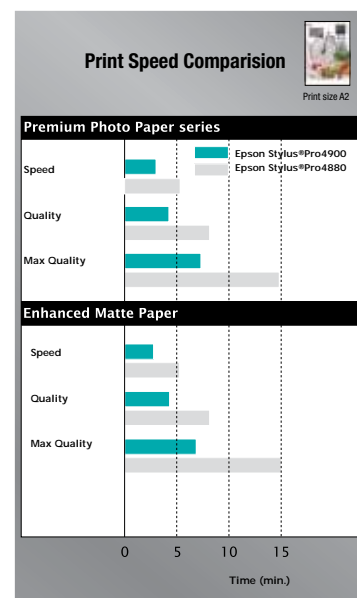
1440 x 1440 dpi Mode

With the addition of a new print resolution, 1440 x 1440 dpi, which can be used in conjunction with a third-party RIP, the Epson Stylus® Pro 900 series delivers improved **quality and dot sharpness** when generating 1 bit TIFF proofs.

Pro 7900/9900



Pro 4900



High Speed Throughput

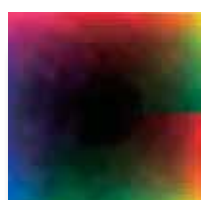
In contrast to their predecessors, the Epson Stylus® 900 series is able to achieve print throughput at rates of up to more than **twice the speed***.

* Based on A1 plain paper draft mode 7900/9900

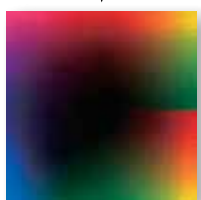
* Based on A2 plain paper draft mode 4900

Advanced LUT Technology

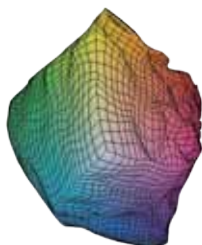
Utilising a new and sophisticated colour LUT (Look-Up Table) technology, the Epson Stylus® Pro 900 series printers achieve **high levels of optimisation** in the key image quality areas of:



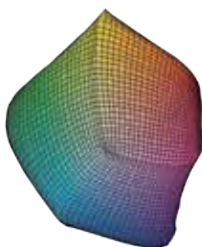
Poor gradation



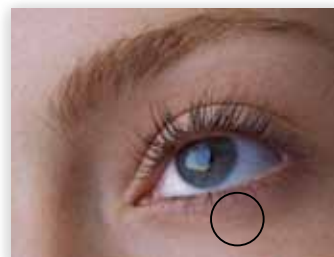
Good gradation



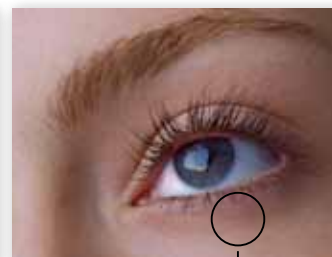
Colour gamut with nonsmooth LUT gradation



Colour gamut with smooth LUT gradation



LUT with poor grain characteristics



LUT with good grain characteristics

LUT quality affects the graininess of skin tones.

- **Smoother Gradation:**

In combination with the 10-colour ink system, the new LUT technology delivers prints with noticeably **smoother colour gradation and transition.**

- **Colour Constancy:**

With a colour constancy level of less than DeltaE 1.0, print colours remain visually consistent when viewed under different lights and lighting conditions.

Colour Gamut

Epson UltraChrome® HDR Ink Technology

Underpinning the Epson Stylus® Pro 900 series ability to deliver the highest quality images on a wide variety of media is the dramatically extended colour gamut achieved by means of the newly developed 10-colour Epson UltraChrome® HDR Ink Technology.

This feature extends proofing capabilities by expanding the gamut to accurately reproduce **more spot colours** than ever before. When used in conjunction with a third-party RIP, more spot and PANTONE® colours are covered when compared to a typical 8-colour ink set. Professional photographers and producers of fine art will also appreciate the expanded colour gamut, which gives **greater colour control** when editing high dynamic range images.

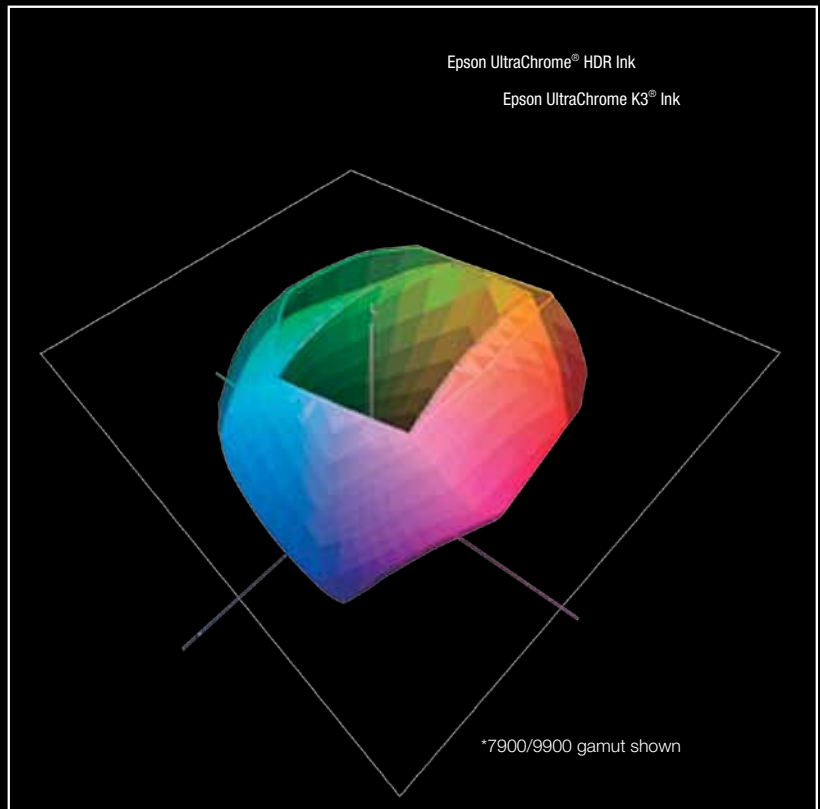
In building on the advances introduced with the Epson UltraChrome K3® Ink with Vivid Magenta, Epson has engineered the UltraChrome® HDR (High Dynamic Range) pigment ink technology. While still retaining its predecessor's key features, such as three-level black ink for superb grey balance, and smooth tonal gradation from shadow to highlight, UltraChrome® HDR comprises several new important innovations that contribute to dramatically enhanced print and colour quality.

98% Pantone® Coverage

Epson UltraChrome® HDR Ink breaks new ground by achieving 98% coverage (1,301 colours) of the Pantone+ formula guide solid coated colours.

This extra wide gamut ensures vivid colour rendering and more precise colour matching.

* 98% coverage of PANTONE+ FORMULA GUIDE solid coated palette based on Epson Proofing Paper White Semimatte printed with Epson printer driver at 2880x1440dpi. PANTONE coverage may vary when printed with a third-party RIP. PANTONE® and other Pantone trademarks are the property of Pantone LLC.



Epson UltraChrome K3® Ink with VM



Epson UltraChrome® HDR Ink

Three-Level Black Ink Technology

Epson UltraChrome® HDR Ink **eliminates the colour twist and short tonal gradation problems** traditionally faced by black-and-white photographers using digital printers, delivering black-and-white prints that rival those created with silver-halide processes. A three-level black ink technology – Black, Light Black and Light Light Black – gives Epson Stylus® Pro 900 prints:

- Smooth tonal gradation with no colour twist
- High, black D-max with glossy media
- Rich shadow and highlight detail
- Unrivalled neutral grey tones

The use of three black inks also allows for a **more stable and accurate** grey balance, which provides professional users with more accurate colour control due to the smaller quantity of colour inks used.

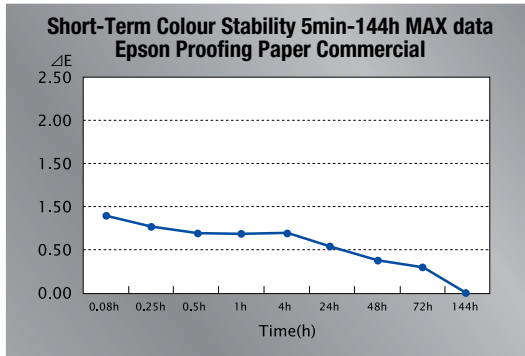


10-Colour Ink System

One of the most significant advantages of UltraChrome® HDR Ink is the **inclusion of Orange and Green ink**, which brings about a dramatic expansion of the colour gamut, especially in the green to yellow, and yellow to red ranges. In particular, with the new Orange ink, the Epson Stylus® Pro 900 series printers deliver a major reduction in image grain that is typically evident in skin tone reproductions.



Overall, the two new inks afford users an incredibly wide colour gamut – on a variety of media – that contributes to their ability to generate prints of outstanding quality.



Excellent Short and Long Term Colour Stability

When Epson UltraChrome® HDR Ink is fired onto the media by the MicroPiezo® TFP print head, it is rapidly absorbed deep into the substrate and as a result, colours become resistant to change and stabilise quickly. Using genuine Epson media, the new ink delivers prints with:

- Lightfastness ratings of up to 75 years* for colour and over 200 years* for black-and-white prints
- Stable colour in just 30 minutes
- Excellent water resistance
- Improved scratch resistance

* Pertains to information on the specification page

Advanced SpectroProofer

To further help operators achieve absolute colour accuracy, the Epson Stylus® Pro 900 series can be configured with an **optional SpectroProofer**, enabling professional colour workflows by means of automatic colour calibration and verification.

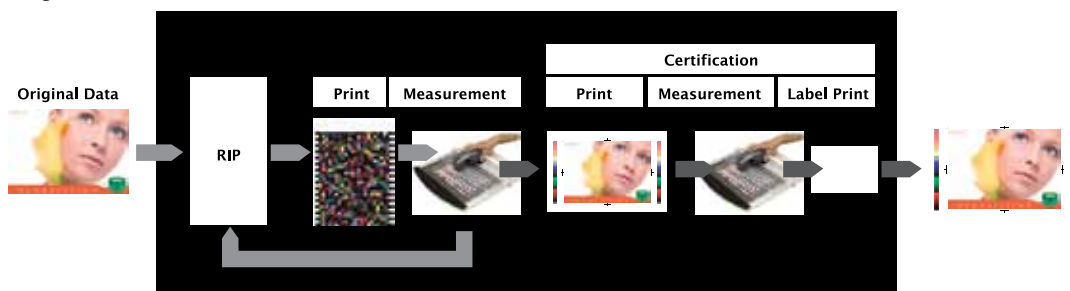
Through automation of those processes and with a mounting unit for the SpectroProofer, the result is a simplified workflow. Importantly, mechanical scanning ensures repeatability and thereby **reduces labour costs while delivering accurate output.**

To compensate for optical brighteners in media, the SpectroProofer is available in two models – with or without a UV cut filter.

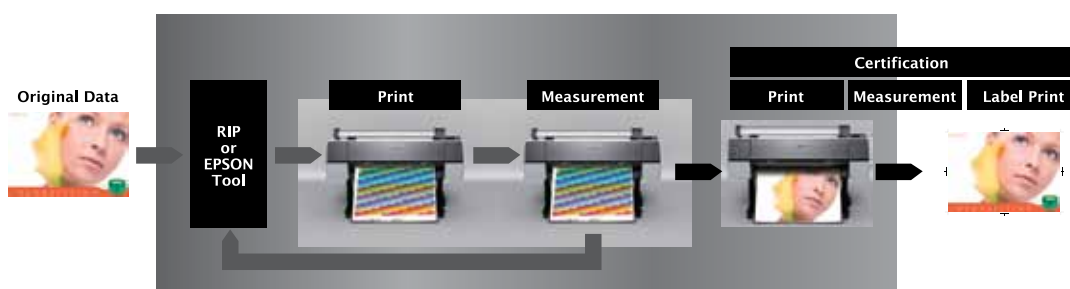
The flexibility of these options will ultimately allow users to generate a colour certification label advising if the proof has passed or failed. This ability is critical in the area of remote and contract proofing.

This option adds flexibility to easily integrate with all your existing workflow and operates with a black or white backing of the measurement patch, ensuring **conformity with the ISO-12647-7 standard for proofing.**

Existing Manual Process



New Automated Process





High Productivity

In high-demand professional printing environments, the range of productivity features included with the Epson Stylus® Pro 900 series ensures that operators are better able to **increase volume output** whilst maintaining **industry leading print quality**.

Large Capacity Ink Cartridges

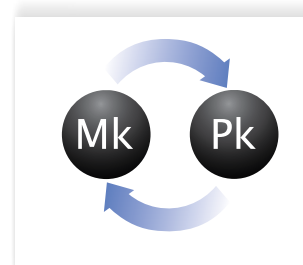
Featuring the ability to handle large capacity ink cartridges, the Epson Stylus® Pro 900 series represents an ideal solution for high throughput environments without the need for constant changing of ink cartridges.

Printer	Ink Cartridge Capacity
Pro 4900	200ml
Pro 7900/9900	350ml or 700ml



Automatic Switching between Photo and Matte Black Inks

Included in the Epson Stylus® Pro 900 series is a feature that provides automatic switching between Photo and Matte Black inks. With both ink cartridges installed, the printer automatically switches between Photo Black (for glossy media), and Matte Black (for matte-type media). In any professional printing environment, this feature ensures a single printer can be used for different types of media without the need for changing inks and flushing ink lines, giving **increased flexibility and reduced running costs**.



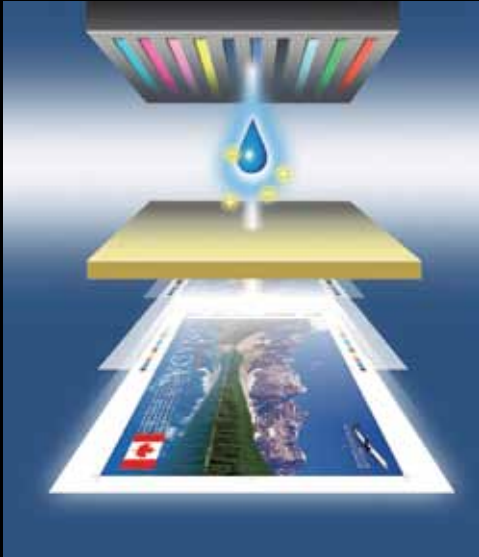
Thick Media Support

Adding significantly to the versatility of the Epson Stylus® Pro 900 series is the ability to handle media up to **1.5mm in thickness**. With this ability, the printers can produce high quality output ready for immediate framing – eliminating the need for mounting.

Handy Alert Lamp (Stylus Pro 4900 only)

An easily visible alert lamp on the front of the printer notifies you when ink or paper needs to be replaced, or of other conditions (configurable), so you are immediately aware of them even from across the room.





Automatic Ink Droplet Detection System

Using precision electrical charge detection technology, the Epson Stylus® Pro 900 series Automatic Ink Droplet Detection System **detects minute electrical charges** on ink droplets fired by the MicroPiezo® TFP print head. Activated each time the printer is turned on and after a predetermined period of time, the system automatically enters head-cleaning mode if an insufficient electrical charge is detected, which signifies inkjet clogging.

High Speed Rotary-Type Cutter

With a four-second, automatic rotary-type paper cutter that has been designed to support all paper (including adhesive), cloth and canvas media, the Epson Stylus® Pro 900 series streamlines the production and post-production processes by accurately cutting roll media prints.



Media Barcode Tracking and Identification System

An in-built Media Barcode Tracking and Identification System enables the Epson Stylus® Pro 900 series to record – by means of barcode printing – media type and remaining length on roll media. Using the barcoded information, the printers **automatically verify the media type and remaining length** when partially used rolls of media are loaded. Along with reducing media wastage, the barcode tracking system eliminates costly production errors arising from incorrect media selection.

Ease-of-Use

In the high demand world of professional large format printing, simplicity of operation is of paramount importance. With the Epson Stylus® Pro 900 series, ease-of-use is a given.



Colour LCD Control Panel

Providing operators with a greater level of ease-of-use, the Epson Stylus® Pro 900 series incorporates an advanced control panel and colour LCD. Featuring one-touch buttons for job pause/cancellation, paper cut, Photo Black/Matte Black ink change, paper feed release/close and ink cartridge holder cover control, the panel has been designed to assist operators improve productivity by simplifying printer operation and control.



Innovative Roll Paper Handling (7900/9900 only)

In affording truly versatile and flexible media management, the Epson Stylus® Pro 7900 and 9900 **requires no spindle**. Instead, the printers utilise a media holding system that simplifies roll media loading and automatically adjusts roll paper skew settings.

Dual-Tension Roll Feed Spindle (4900 only)

To prevent misalignment that can result in uneven feeding and lower print quality, the Epson Stylus® Pro 4900 uses a dual-tension roll feed spindle. Providing easier roll paper handling, it lets you quickly switch from normal tension to high tension when using thinner media. Convenient adapter collars ensure compatibility with both 2" and 3" rolls.



Epson Stylus®

Pro 4900 | Pro 7900 | Pro 9900



Stylus Pro 9900



Stylus Pro 7900



Stylus Pro 4900

Specifications

Epson Stylus® Pro 4900	17" A2 Wide Printer
PRODUCT CODE:	PRO4900
SIZE	17 inch wide (A2+)
INK MODE	10 Colour (11 inks onboard) Auto switching between Photo and Matte Black
PRINT TECHNOLOGY	
Print Head	Advanced MicroPiezo® TFP (Thin Film Piezo) Print Head Automatic Head Alignment Technology
Nozzle Configuration	360 nozzles per colour / Automatic Nozzle Check Technology
Print Direction	Bi-directional printing, uni-directional printing
PRINT RESOLUTION	
Maximum Resolution	2880dpi x 1440dpi with Epson Variable Sized Droplet Technology
Minimum Ink Droplet Size	3.5pl
INK SYSTEM	
Ink Type	Epson UltraChrome® HDR (High Dynamic Range) Ink
Configuration	10-Colour pigment ink (C, VM, Y, PK, MK, LC, VLM, LK, LLK, O, G) with 11 slots
Ink Cartridge	Individual high capacity, hot swappable ink cartridge
Ink Capacity	200ml
PRINTER SPEED	
Draft (360 x 360dpi)	0.5 minutes
Fine (720x720dpi)	2.7 minutes
Super Fine (720x1440dpi)	3.5 minutes
Super Photo (2880x1440dpi)	4.2 minutes
PRINTER DRIVER	Windows® 7/7x64/Vista/Vista64/XP/XP64/2000, Mac® OS X 4.11 or later
PAPER INPUT CAPABILITY	
ROLL MEDIA	
	Single roll 1 roll < 150mm / Outside diameter Media width 203mm - 432mm (8" - 17") Media thickness 0.08mm - 1.50mm Plain paper 250 sheets (A4-A2)
ASF CAPACITY	
PAPER OUTPUT CAPABILITY	
PRINTING AREA (WIDTH)	
CONSUMABLE PARTS	
CONTROL PANEL	
ROLL DIMENSIONS	
MEMORY	
LANGUAGES	
INTERFACES(STANDARD)	
VOLTAGE / CURRENT	
POWER CONSUMPTION	
DIMENSIONS	
WEIGHT	
WARRANTY	

Epson Stylus® Pro 7900	24" A1 Wide Printer
PRODUCT CODE:	PRO7900
SIZE	24 inch wide
INK MODE	10 Colour (11 inks onboard) Auto switching between Photo and Matte Black
PRINT TECHNOLOGY	
Print Head	MicroPiezo® TFP (Thin Film Piezo) Print Head / Automatic Head Alignment Technology
Nozzle Configuration	360 nozzles per colour / Automatic Nozzle Check Technology
Print Direction	Bi-directional printing, uni-directional printing
PRINT RESOLUTION	
Maximum Resolution	2880dpi x 1440dpi with Epson Variable Sized Droplet Technology
Minimum Ink Droplet Size	3.5pl
INK SYSTEM	
Ink Type	Epson UltraChrome® HDR (High Dynamic Range) Ink
Configuration	10-Colour pigment ink (C,VM,Y,PK,MK,LC,VLM,LK,LLK,O,G) with 11 slots
Ink Cartridge	Individual high capacity, hot swappable ink cartridge
Ink Capacity	350ml or 700ml
PRINTER SPEED	
Draft (360x360dpi)	0.8 minutes
Fine (720x720dpi)	4.5 minutes
Super fine (720x1440dpi)	6.8 minutes
Super Photo (2880x1440dpi)	13.4 minutes
PRINTER DRIVER	Windows® 7/7x64/Vista/Vista64/XP/XP64/2000, Mac® OS X
PAPER INPUT CAPABILITY	
ROLL MEDIA	
	Single Roll 1 roll < 170mm / Outside diameter Media width 254mm - 620mm Maximum Media thickness 0.08mm - 1.5mm Output bin, Rotary cutter blade, single roll system
PAPER OUTPUT CAPABILITY	
PRINTING AREA (WIDTH)	
Maximum paper width	Roll Paper 406mm - 610mm, 2 / 3 inch core
Cut Sheet	210mm - 610mm

CONSUMABLE PARTS	Cutter blade, maintenance tank
CONTROL PANEL	
ROLL DIMENSIONS	
MEMORY	Colour: 2.5 inch LCD screen Size: 320 x 200 pixels Core diameter 2" or 3", Max. Outside Diameter Ø 150mm
LANGUAGES	Printer: 256MB Network: 64MB
INTERFACES(STANDARD)	ESC / P2 Raster
VOLTAGE / CURRENT	USB2.0 (Compatible with 1.1) / 10Base-T 100 Base-TX 100 - 120V / 220 - 240V
POWER CONSUMPTION	Operating: 70W Sleep: <16W Standby: <1W Deep Sleep: <16W
DIMENSIONS	1356mm x 667mm x 1218mm
WEIGHT	84.5kg (includes stand)
WARRANTY	Standard 1 year on Site within service radius

Epson Stylus® Pro 9900	44" B0+ Wide Printer
PRODUCT CODE:	PRO9900
SIZE	44 inch wide
INK MODE	10 Colour (11 inks onboard) Auto switching between Photo and Matte Black
PRINT TECHNOLOGY	
Print Head	MicroPiezo® TFP (Thin Film Piezo) Print Head / Automatic Head Alignment Technology
Nozzle Configuration	360 nozzles per colour / Automatic Nozzle Check Technology
Print Direction	Bi-directional printing, uni-directional printing
PRINT RESOLUTION	
Maximum Resolution	2880dpi x 1440dpi with Epson Variable Sized Droplet Technology
Minimum Ink Droplet Size	3.5pl
INK SYSTEM	
Ink Type	Epson UltraChrome® HDR (High Dynamic Range) Ink
Configuration	10-Colour pigment ink (C,VM,Y,PK,MK,LC,VLM,LK,LLK,O,G) with 11 slots) Auto switching between photo and matte black
Ink Cartridge	Individual high capacity hot swappable ink cartridge
Ink Capacity	350ml or 700ml
PRINTER SPEED	
Draft (360x360dpi)	0.8 minutes
Fine (720x720dpi)	4.5 minutes
Super fine (720x1440dpi)	6.8 minutes
Super Photo (2880x1440dpi)	13.4 minutes
PRINTER DRIVER	Windows® 7/7x64/Vista/Vista64/XP/XP64/2000, Mac® OS X
PAPER INPUT CAPABILITY	
ROLL MEDIA	
	Single Roll 1 roll < 170mm / Outside diameter Media width 254mm - 1118mm Maximum Media thickness 0.08mm - 1.5mm Output bin, Rotary cutter blade, single roll system
PAPER OUTPUT CAPABILITY	
PRINTING AREA (WIDTH)	
Maximum paper width	Roll Paper 406mm - 1118mm, 2 / 3 inch core
Cut Sheet	210mm - 1118mm
CONSUMABLE PARTS	
CONTROL PANEL	
ROLL DIMENSIONS	
MEMORY	Colour: 2.5 inch LCD screen Size: 320 x 200 pixels Core diameter 2" or 3", Max. Outside Diameter Ø 150mm
LANGUAGES	Printer: 256MB Network: 64MB
INTERFACES(STANDARD)	ESC / P2 Raster
VOLTAGE / CURRENT	USB2.0 (Compatible with 1.1) / 10Base-T 100 Base-TX 100 - 120V / 220 - 240V
POWER CONSUMPTION	Operating: 80W Sleep: <16W Standby: <1W Deep Sleep: <16W
DIMENSIONS	1864mm x 667mm x 1218mm
WEIGHT	116kg (includes stand)
WARRANTY	Standard 1 year on Site within service radius

* LIGHTFASTNESS TEST CRITERIA (INDOOR DISPLAY CONDITION)

Test Conditions

1. Under fluorescent light (Indoor Display Condition) with glass mount.

2. The data is calculated by Epson's accelerated test and it does not mean Epson guarantees periods.

3. The estimated longevity does not indicate the colour changing and the durability of the paper itself.

Light Source: Fluorescent

LightIntensity: 70,000

luxTemperature: 24°C

Humidity: 60%RH

Glass mount: 2mm, soda lime

Fade criteria: Pure YMC 30% loss at OD = 1 Display-life calculation: Total illuminance / (500lux x 10hours x 365days = 1year)

As an International ENERGY STAR Partner, Epson has determined that this product meets the International ENERGY STAR guidelines for energy efficiency. Epson is the registered trademark of SEIKO Epson Corporation. Epson Stylus, PerfectPicture, MicroPiezo, AcuPhoto Halftoning, QuickDry are the trademarks of SEIKO Epson Corporation. All other names and company names used herein are for identification purpose only and may be the trademarks or registered trademarks of their respective owners. Epson disclaims any and all rights in those marks. All print samples shown herein are simulations. Specifications are subject to change without notice.

