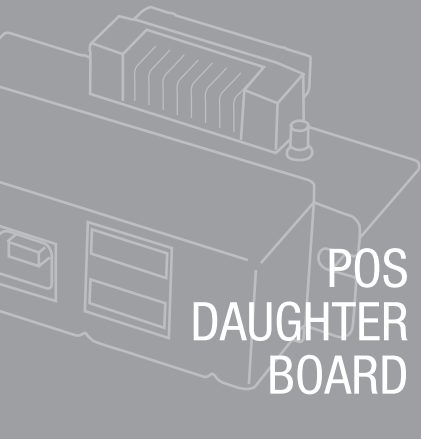


# EPSON®

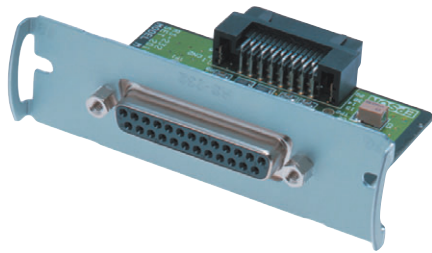
# POS CONNECTIVITY



## Providing the Flexibility You Need To Maximise Your IT Investment

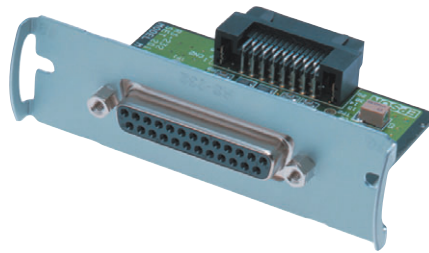
- Meet the connectivity needs of the existing environment
- Connectivity migration path for the future
- Connectivity options made available as new technology is developed





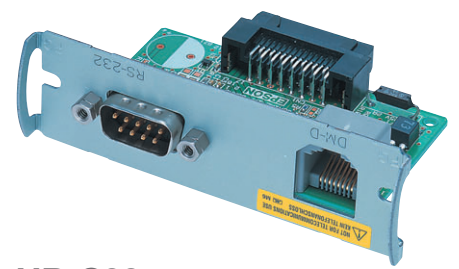
### UB-S01

RS232 Serial with 25pin D connector



### UB-S02

RS485 Serial with 25pin D connector



### UB-S09

RS232 Serial with 9pin D connector and EPSON customer pole display connection



### UB-E01

10 Base T Ethernet



### UB-U01III

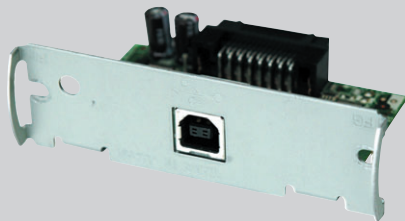
USB with Hub and EPSON customer pole display connection



### UB-U02III

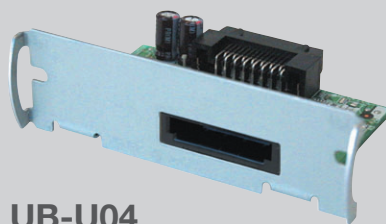
USB with EPSON customer pole display connection

*EPSON's plug'n'play daughter board design provides the flexibility for your connectivity requirements today, combined with a migration path which will meet your requirements tomorrow. The line-up already consists of the latest in connectivity options, such as USB, Ethernet and Wireless, but as technological advances are made, the line-up will continue to evolve, providing an upgrading path for the life of the transaction point, maximising your IT investment.*



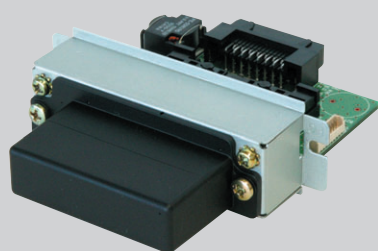
### UB-U03III

USB only



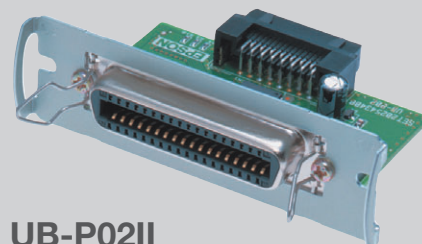
### UB-U04

Powered USB



### UB-R02

Wireless Ethernet, 802.11b



### UB-P02II

IEEE1284 Parallel

# EPSON®

EPSON AUSTRALIA  
CUSTOMER SERVICE LINE  
Tel: 1300 304 POS

VISIT OUR WEBSITE:  
[www.epson.com.au](http://www.epson.com.au)