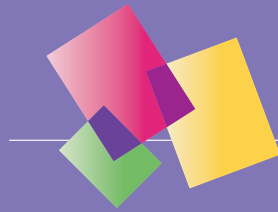
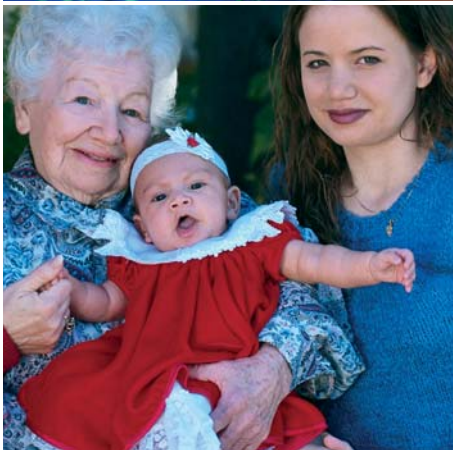


EPSON®



PictureMate

personal photo lab



CAMERA, MEMORY
CARD AND CABLE
NOT INCLUDED

Simple, Convenient, Quality Photos...Anywhere and Anytime

- Quality – Brilliant photos using the new, EPSON UltraChrome™ ink system featuring Red & Blue inks for more vibrant colours
- Convenient – One touch of the button for lab quality glossy photos
- Durable – Create glossy photos that are resistant to damage from light, water and airborne contaminants
- Versatile – The ideal companion for any digital camera, allowing you to create beautiful photos without the need for a computer
- Cost Effective – at home convenience – photo lab affordability



FOR HIGHEST QUALITY
DEMAND EPSON
INKS+PAPERS

EPSON makes creating photos from your digital camera simple, cost effective and convenient. With the EPSON PictureMate, creating lab-quality and highly durable photos has never been easier.



CAMERA, MEMORY CARD
AND CABLE NOT INCLUDED



Outstanding Photos

The EPSON PictureMate features a versatile six-colour (Cyan, Magenta, Yellow, Photo Black, Red, Blue) pigment ink system. As a result the EPSON PictureMate creates photos with extremely smooth colour gradation and beautiful skin tones. This makes the EPSON PictureMate ideal for any colour photo. Adding further to PictureMate's versatility is its ability to produce BorderFree™** or classic border photos with different tonal affects, such as black-and-white or sepia.



PictureMate uses six-colour high-quality inks to deliver lab-quality photos.

Durable Photos

Drink spills and sticky fingers no longer have a devastating effect on your photos. The EPSON PictureMate has been designed to create photos with high levels of water and smudge resistance that can withstand the rigours of moisture and constant handling. Your photos will also keep their vibrant colours long-term, remaining resistant to the damaging effects of light for over 100 years*. (Even longer when kept in a photo album).

Affordable Photos

With the EPSON PictureMate, creating fantastic photos is affordable. You can choose which photos you want, unlike a photo lab that prints the entire film roll. Your cost savings start as soon as the EPSON PictureMate is put to work.

Creating PictureMate photos is both easy and affordable when you purchase the PictureMate PicturePack. This specially designed pack contains the six colour PictureMate photo cartridge and 100 sheets of PictureMate Photo Paper (10 x 15cm). All you need to create 100 glossy PictureMate photos!



Simple One Touch Operation

The EPSON PictureMate can create photos 'standalone' without the need for a computer. Simply insert your memory card / stick into the appropriate card slot, and press the button. It's that easy! EPSON's PictureMate supports most major memory card formats available today. Attach the optional Bluetooth® adaptor and connect wireless devices such as a mobile phone, PDA or notebook computer. PictureMate even offers the versatility of full Windows® and Macintosh® compatibility if required.



Layouts Can Be Selected Without the Need for a Computer

Different layouts, such as Classic Border, BorderFree™**, Index (20) or Double Printing can be easily selected without connecting to a computer.



Creating Cute Frames

If connected to a computer, original photos can be easily created using cute frames.



(DISNEY Based on "Winnie the Pooh" works, by A.A. Milne and E.H. Shepard)

Photos Anywhere, Anytime

The EPSON PictureMate creates beautiful photos anywhere, anytime. Whether holidaying on a houseboat, in a hotel or caravan park, as long as there's a power point, the EPSON PictureMate will deliver fantastic lab-quality photos – easily and conveniently.

EPSON®

PERSONAL
PHOTO LAB

EPSON PictureMate Specifications



EPSON AUSTRALIA
CUSTOMER SERVICE LINE
Tel: 1300 361 054

VISIT OUR WEBSITE:
www.epson.com.au

HEAD OFFICE SYDNEY
3 Talavera Road
North Ryde, NSW 2113
Tel: (02) 8899 3666

MELBOURNE
Tel: (03) 8823 9200

BRISBANE
Tel: (07) 3360 0219

PERTH
Tel: (08) 9480 0418

ADELAIDE
Tel: (08) 8237 0518

EPSON NEW ZEALAND
CUSTOMER SERVICE LINE
Tel: 0800 23 77 66

VISIT OUR WEBSITE:
www.epson.co.nz

AUCKLAND
245 Hobson Street
Auckland NZ
Tel: (09) 366 6855

WELLINGTON
Tel: (04) 473 3494

ABN 91 002 625 7830
06/04

PRINTER TYPE

| | |
|----------------------|--|
| PRODUCT NAME | PictureMate |
| PRODUCT CODE | C11C556013 |
| PRINTING METHOD | On demand inkjet (piezoelectric) |
| NOZZLE CONFIGURATION | 90 per colour |
| INK COLOURS | Red Cyan Blue Magenta Yellow Black |

DURABILITY

| | |
|--|---|
| LIGHTFASTNESS | Over 100 years* |
| LIGHTFASTNESS TEST CRITERIA (INDOOR DISPLAY CONDITIONS) | |
| Light source | Glass-filtered cool white fluorescent illumination |
| Intensity | 35,000 lux |
| Temperature | 24°C |
| Humidity | 60% RH |
| Filter | Glass filter in contact with test samples |
| Fade criteria | Visually-Weighted Endpoint Criteria set v3.0 |
| Display life calculation | Data was extrapolated to a display condition of 450 lux for 12 hours per day. |

* Tests developed and conducted by Wilhelm Imaging Research. See www.wilhelm-research.com (NEW Display Permanence Ratings for Current Products in the 4 x 6 inch printer category) for more information.

Data is calculated using accelerated simulation of fading under indoor preservation conditions including fluorescent light indoor display. Temperature, humidity and some atmospheric gases may also affect the rate of fading. The estimated lightfastness period does not indicate the colour changing or the durability of the paper itself. EPSON recommends that your prints be stored in a photo album (or plastic photo storage box) in acid free, archival sleeves commonly available from most camera shops.

PRINT SPEED

| | |
|-----------------|--|
| PHOTO 10 x 15cm | 127.61 [†] sec. without borders *1 |
| PHOTO 10 x 15cm | 112.24 [†] sec. with borders |
| RESOLUTION | 5760 optimised dpi with EPSON VSDT / Standalone 1440dpi with EPSON VSDT |

Print Speed Data Printout Patterns The thumbnail images below show the printout patterns used to determine print speed specifications.



*1 Photo 10 x 15cm

"Second" rating refers to the time taken to print one page. The computer environment we test under is as follows: CPU: 1GHZ Pentium III; RAM: 128MB; OS: Windows ME; Interface / Connectivity: USB

[†] When printed on EPSON PictureMate Paper

OPTIONS

Bluetooth adaptor

PAPER HANDLING

| | |
|-------------------|--|
| PAPER FEED METHOD | Top in Front out |
| PAPER SIZE | EPSON PictureMate Photo Paper or EPSON Premium Glossy Photo Paper (10 x 15cm only) |
| CAPACITY | 20 sheets |

As an International ENERGY STAR Partner, EPSON has determined that this product meets the International ENERGY STAR guidelines for energy efficiency. EPSON is the registered trademark of SEIKO EPSON Corporation. EPSON STYLUS, PerfectPicture, MicroPiezo, AcuPhoto Halftoning, QuickDry are the trademarks of SEIKO EPSON Corporation. All other names and company names used herein are for identification purpose only and may be the trademarks or registered trademarks of their respective owners. EPSON disclaims any and all rights in those marks. All print samples shown herein are simulations. Specifications are subject to change without notice.

INTERFACE

USB 1.1[†]

[†] To use the USB port, your PC must conform to PC98 specifications, and have Windows® 98 or later preinstalled. Consult the documentation provided with your PC for further information about USB connectivity. Note also that printing errors may occur if non-standard cables or more than two hub connections are used.

PRINTER SOFTWARE

| | |
|-------------------|--|
| PRINTER DRIVERS | |
| OPERATING SYSTEMS | Microsoft® Windows98® / 2000 / XP Mac® OS 9.1 or later, Mac® OS X 10.1.3 or later |

APPLICATIONS (PRINTER SOFTWARE)

PHOTOQUICKER
PHOTO STARTER
CARD MONITOR
PIF DESIGNER 2.2
PIF TOOL 2.2
PIF TEMPLATES 2.2

See www.epson.com.au for future software updates.

DIRECT CONNECT TO DIGITAL CAMERA

USB DIRECT PRINT
PICTBRIDGE

MEMORY CARDS

Compact Flash®, Smart Media™ (max 128MB), Memory Stick®, Magic Gate Memory Stick, Memory Stick PRO, Memory Stick Duo*, Microdrive™, SD Memory Card, Mini SD Card*, MultiMedia Card, xD Picture Card™

* Adaptor required

ELECTRICAL SPECIFICATIONS

| | |
|--------------------------|-------------------------------|
| AC ADAPTOR RATED VOLTAGE | AC220 ~ 240v |
| OUTPUT | 42vDC.4A |
| RATED FREQUENCY | 50 to 60 Hz |
| POWER CONSUMPTION | 13W (ISO10561 Letter Pattern) |

WARRANTY

| | |
|-------------------------------------|-------|
| 12 MONTH RETURN TO BASE | |
| OPTIONAL ADDITIONAL 2 YEAR WARRANTY | 3YWPM |

For warranty terms see www.epson.com.au/warranty

GENUINE EPSON PAPER + INK

| | |
|---|------------|
| PictureMate PicturePack (with 100 sheets of paper and a 6 colour photo cartridge) | C13T557090 |
| PictureMate cartridge | C13T557090 |

** True BorderFree printing is available for 10 x 15cm photos only.

The EPSON IntelliGlide™ Ink System is designed to work perfectly in harmony with the printer and your choice of media to ensure you get:

- the very best of print quality every print, every time
- and trouble-free, peace-of-mind printing every print, every time

The EPSON IntelliGlide Ink System brings maximum benefits, maximum ink usage and the interchange of EPSON cartridges suitable for this model.

The EPSON IntelliGlide Ink System gives you easy-to-see, always available information about all your ink levels.

This printer is designed to be used only with Genuine EPSON IntelliGlide Ink cartridges

IntelliGlide Ink cartridges are not designed for refill.



It's now easier for you to identify Genuine EPSON cartridges. EPSON is gradually replacing the current hologram with the new anti-counterfeit Color Shifting Label.



FOR HIGHEST QUALITY
DEMAND EPSON
INKS+PAPERS