

**EPSON**  
EXCEED YOUR VISION

# STYLUS™ PHOTO RX650

MULTI  
FUNCTIONAL  
PRINTER



## The Ultimate Photo All-in-one Printer

- Built-in 2.5-inch Photo Fine™ technology colour LCD photo viewer
- Direct copy and print CD/DVD designs with compatible discs
- Six individual Intellidrive™ ink cartridges
- True BorderFree™# Edge-to-Edge photo printing
- Extensive standalone photograph printing features and options
- High resolution 3200 x 6400dpi Matrix CCD scanner with built-in transparency unit
- 5760 x 1440 Optimised dpi using Resolution Performance Management Technology

^ Digital Camera not included.





With the **Epson**  
**STYLUS™ PHOTO RX650**,  
all the features you would  
expect from a powerful and  
advanced all-in-one photo  
centre at the touch  
of a button.

## Printer

### Outstanding Photo Print Quality and Speed

With a minimum ink droplet size of just 1.5pl thanks to Epson's Variable Sized Droplet Technology (VSDT), the Epson STYLUS PHOTO RX650 features an outstanding 5760 x 1440 Optimised dpi using Resolution Performance Management (RPM) Technology. Add to this a highly efficient print head featuring 90 nozzles per colour to increase print speed, and the Epson STYLUS PHOTO RX650 delivers high levels of throughput while maintaining superb print quality.

### Wireless Print

With an internal infrared communications port along with an optional Bluetooth adaptor, you can now print directly from compatible digital still cameras and even mobile phones to your Epson STYLUS PHOTO RX650.

### PC-Free Photo Printing Flexibility

Producing high quality photo prints without a PC is absolutely effortless with the Epson STYLUS PHOTO RX650. Its large 2.5-inch Photo Fine™ colour LCD preview monitor displays easy-to-read menus, configuration screens, image file thumbnails and photograph previews. In combination with an intuitive control panel, the Photo Fine LCD preview monitor is a major step forward in no-fuss photo printing direct from digital cameras and other memory cards. For digital camera users, the Epson STYLUS PHOTO RX650 delivers a wealth of support, with:

- Card slots for most popular digital camera memory cards and sticks##
- Card slots and USB port, which lets you store images from memory card to a connected USB storage device.
- USB 2.0 Direct Print, which supports direct connection between the Epson STYLUS PHOTO RX650 and any USB Direct Print-enabled digital cameras.
- USB 2.0 Direct Print from a variety of USB devices, such as flash drives and CD-R drives.
- Built-in infrared and optional direct connection with Bluetooth-enabled devices, such as digital cameras, notebooks, PCs, mobile phones and PDAs.

### Durable and Brilliant Colour

Epson genuine ink and media combine to produce beautiful and brilliant prints with incredibly high resistance to light, ozone gas and water. With an advanced six colour (Cyan, Light Cyan, Magenta, Light Magenta, Yellow and Black) dye-based ink system, the Epson STYLUS PHOTO RX650 delivers prints that are beautiful and true-to-life.

### Individual Intellidge™ Ink Cartridges

The Epson STYLUS PHOTO RX650's use of individual Epson Intellidge Ink cartridges, each with high performance dye-based ink, plays a major part in the printer's beautiful and long-lasting photo printing capabilities. Embedded within each of the Epson STYLUS PHOTO RX650's six ink cartridges is an Epson Intellidge chip, designed specifically to work with the software driver to provide you with accurate, on-screen ink level status information. You can even remove and replace partially empty cartridges in preparation for big print jobs, then swap them back for smaller jobs – all without losing track of ink usage and levels.



Advance 6 Colour Intellidge Ink

## Bundled Software

For quality and ease-of-printing, the Epson STYLUS™ PHOTO RX650 is bundled with powerful software tools that help you fully exploit the amazing potential of this innovative multi-function printer. Along with Epson Scan, PRINT IMAGE Framer (PIF) and PIF Designer, the feature-rich software bundle also includes the Epson Creativity Suite, which consists of Epson's Web-to-page, File Manager, Scan Assistant, Image Clip Palette, Copy Utility, Print CD and Easy Photo Print applications.

## Extensive Memory Card Support

For absolute camera/memory card-to-printer flexibility, the Epson STYLUS RX650 provides full support for the majority of memory cards used in modern digital still cameras.

xD card slot:	xD-Picture Card (with adaptor), xD-Picture Card Type M
Smart Media slot:	Smart Media
CompactFlash Type slot:	Compact Flash (memory card only) and Micro Drive
Memory Stick slot:	Memory Stick, MagicGate Memory Stick, MagicGate Memory Stick Duo, Memory Stick PRO, Memory Stick Duo (with adaptor), Memory Stick PRO Duo (with adaptor)
SD/MMC slot:	SD Card, MiniSD (with adaptor) and Multi Media Card



## Copier

### Powerful Photocopying Functionality

Designed specifically to deliver optimum performance as a standalone or PC-connected solution, the Epson STYLUS PHOTO RX650 has outstanding colour and black-and-white photocopying functionality.

The combination of the unit's high resolution scanning engine, photo printing and intuitive control panel ensures everything from photos through to business documents can be reproduced faithfully at just the touch of a button.

### Streamlined Control Panel

Whether operating as a standalone solution or connected to your personal computer, the Epson STYLUS PHOTO RX650 features a control panel designed to simplify even the most advanced scan, copy and print functions.

### CD/DVD Direct Copy

In carrying on the Epson tradition of fully featured multi-function printers, the Epson STYLUS PHOTO RX650 supports easy, high quality direct-to-surface printing on compatible inkjet-printable 8cm and 12cm CD/DVDs. Added to this is the ability to do direct scanning and printing of a CD design to the surface of an inkjet-printable CD/DVD placed in the printing guide.



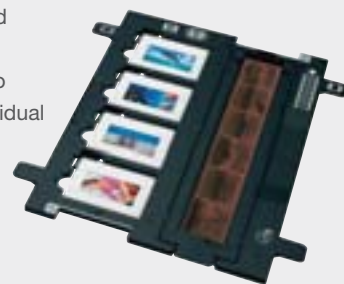
## Scanner

### Photo Scanning

With an advanced micro-step drive for scanning resolutions of up to 3200 x 6400dpi, the Epson STYLUS PHOTO RX650 captures the finest of details and colour gradations in documents, photos, slides and negatives. By utilising a newly developed Matrix CCD (Charge Coupled Device), the Epson STYLUS PHOTO RX650's scanning engine represents a significant improvement in light gathering power.

### Integrated Transparency Unit

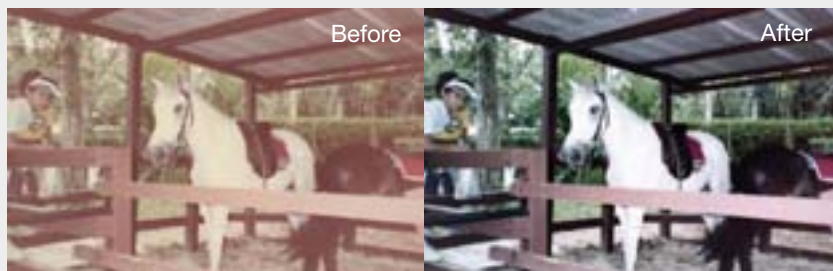
The Epson STYLUS PHOTO RX650's fully integrated Transparency Unit (TPU) with film holders, makes simultaneous and accurate scanning of up to six individual frames of 35mm strip film or four individual 35mm mounted slides incredibly simple. With this feature and in combination with advanced Epson scanning software, even high volume scanning of negatives and transparencies can be achieved in a fraction of the time it might otherwise take.



### Colour Restoration & Dust Removal

Bring your colour photos, slides or negatives back to life with Epson's powerful scan tools – Colour Restoration and Dust Removal software. With the Colour Restoration tool, sophisticated in-built technologies are automatically utilised to restore image colour that has been subjected to fading and other colour loss influences, such as light and airborne contaminants.

The Dust Removal tool automatically detects and corrects dust shadows that appear on scanned images.



Colour Restoration

**EPSON**  
EXCEED YOUR VISION

MULTI  
FUNCTIONAL  
PRINTER

EPSON STYLUS™ PHOTO RX650  
**Specifications**



EPSON AUSTRALIA  
CUSTOMER SERVICE LINE  
**Tel: 1300 361 054**

VISIT OUR WEBSITE:  
**www.epson.com.au**

HEAD OFFICE  
SYDNEY  
3 Talavera Road  
North Ryde, NSW 2113  
Tel: (02) 8899 3666

MELBOURNE  
Tel: (03) 8823 9200

BRISBANE  
Tel: (07) 3360 0219

PERTH  
Tel: (08) 9480 0418

ADELAIDE  
Tel: (08) 8237 0518

EPSON NEW ZEALAND  
CUSTOMER SERVICE LINE  
**Tel: 0800 23 77 66**

VISIT OUR WEBSITE:  
**www.epson.co.nz**

AUCKLAND  
245 Hobson Street  
Auckland NZ  
Tel: (09) 366 6855

WELLINGTON  
Tel: (04) 473 3494

ABN 91 002 625 783  
01/06



**Printer**

PRINTER TYPE		
EPSON STYLUS RX650	C11C608031	
PRINTING METHOD	On-demand Inkjet (piezoelectric)	
NOZZLE CONFIGURATION	90 nozzles (Black) 5 x 90 nozzles (Cyan, Magenta, Yellow, Light Cyan, Light Magenta)	
PRINT DIRECTION	Bi-directional with logic seeking	
SCREEN SIZE	2.5 inch	
PRINT SPEED		
BLACK TEXT (MEMO) A4	Approx. 21 PPM (Economy)	★ 1
COLOUR TEXT (MEMO) A4	Approx. 21 PPM (Economy)	★ 2
PHOTO 4" x 6"	Approx. 40 <sup>†</sup> sec	★ 3

**Print Speed Data Printout Patterns** The thumbnail images below show the printout patterns used to determine print speed specifications.



★ 1 Black Text (MEMO) A4  
★ 2 Colour Text (MEMO) A4  
★ 3 Photo 4" x 6" (borderless) (Photo courtesy of ISO/JIS-SC18. Reprinted by permission.)

"Second" rating refers to the time taken to print one page. "ppm" rating refers to the number of pages printed in one minute. The computer environment we test under is as follows: CPU: 1GHz Pentium 4, RAM: 256MB; OS: Windows® XP; Interface/Connectivity: USB 2.0

† When printed on Epson Premium Glossy Photo Paper.

RESOLUTION	
	5760 Optimised dpi with Variable-Sized Droplet Technology using Resolution Performance Management (RPM) Technology

PAPER HANDLING	
PAPER FEED METHOD	Friction feed with paper feeder
PAPER HOLD CAPACITY	80 @ 90gsm
PAPER SIZES	A4, A5, A6, Letter, B5, 4" x 6", 5" x 7", Envelopes (No. 10, DL, C6, 123 x 220mm)

# True BorderFree™ printing is available for the following media sizes: 4" x 6", 5" x 7" and A4. BorderFree prints are media dependent. See www.epson.com.au for detailed specifications.

**Scanner**

SCANNER TYPE	Alternative 6 lines colour CCD with On-Chip Microlens
PHOTOELECTRIC DEVICE	3 line Colour CCD
DOCUMENT SIZE	216 x 297mm
PIXEL DEPTH	48-bit internal, 48-bit external
SCANNING SPEED	Up to 4.5msec / line mono and colour @ 600dpi

SCANNING RESOLUTION	Main 3200 x SubScan 6400dpi with Micro Step Drive
---------------------	---

**Copy Function**

COPY SPEED		
BLACK TEXT (MEMO) A4	Approx. 21 cpm (Draft)	★ 1
COLOUR TEXT (MEMO) A4	Approx. 21 cpm (Draft)	★ 2

STANDALONE COPIER FUNCTIONALITY	
	LCD Control Panel
	Independent Menu Copies
	Number of Copies 1 to 99
	Reduce, 100%, Fit-to-page
	Margin Modes: BorderFree, Standard
	Copy Modes: A4, 4" x 6", 5" x 7"
	Paper: Plain, Premium glossy, Semi-glossy, Matte

**General**

**INTERFACES**

PC Interface: High Speed USB 2.0  
Host: USB 2.0 Full Speed (PictBridge, USB Direct Print only)

WIRELESS PRINT IrDA Standard (Infrared)

**MEMORY CARDS SUPPORTED**

xD card slot xD-Picture Card, xD-Picture Card Type M  
SM slot Smart Media\*\*  
CF Typell slot CompactFlash®, MicroDrive  
MS slot Memory Stick®, MagicGate Memory Stick, Memory Stick PRO, Memory Stick Duo†, Memory Stick PRO Duo†, MagicGate Memory Stick Duo  
SD / MMC slot SD Card, MiniSD†, Multi Media Card

† Adaptor Required  
\*\* Max. capacity 128mb

**OPERATING SYSTEMS**

PRINTER DRIVERS Mac® OS X 10.2.4 or later, Microsoft® Windows® 98 / 2000 / Me / XP / XP 64-bit\*

\* Download drivers from www.epson.com.au

**PRINTER SOFTWARE (AVAILABLE ON CD-ROM ONLY)**

On-Line Guide, Epson Scan, Epson Creativity Suite, File Manager, Scan Assistant, Attach to Email, Image Clip Palette, Copy Utility, Easy Photo Print, Web-To-Page, Epson P.I.F., Epson P.I.F. Designer, Epson Print CD

**ELECTRICAL SPECIFICATIONS**

RATED VOLTAGE AC 220 ~ 240V  
RATED FREQUENCY 50 ~ 60Hz  
POWER CONSUMPTION Approx. 22W (ISO10561 Letter Pattern)

**INK CARTRIDGES**

**BLACK INK (T0491)\*\*** **COLOUR INK\*\***  
Cyan (T0492), Magenta (T0493), Yellow (T0494), Light Cyan (T0495), Light Magenta (T0496)

The Epson **Intelligence™ Ink System** is designed to work perfectly in harmony with the printer and your choice of media to ensure you get:

- the very best of print quality every print, every time
- and trouble-free, peace-of-mind printing every print, every time

The Epson Intelligence Ink System brings maximum benefits, maximum ink usage and the interchange of Epson cartridges suitable for this model.

The Epson Intelligence Ink System gives you easy-to-see, always available information about all your ink levels.

**This printer is designed to be used only with Genuine Epson Intelligence Ink cartridges**

Intelligence Ink cartridges are not designed for refill.



To ensure your cartridges are Genuine, look for the anti-counterfeit **Color Shifting Label**.

\*\* The printer ships with full cartridges. Refer to www.epson.com.au for print capacity details.

**GENUINE EPSON PAPER**

EPSON BRIGHT WHITE INKJET PAPER (A4)	S041442
EPSON PHOTO QUALITY INKJET PAPER (A4)	S041061
EPSON PHOTO PAPER / GLOSSY PHOTO PAPER (A4)	S041140
EPSON PREMIUM GLOSSY PHOTO PAPER (5" x 7")	S041464
EPSON PREMIUM GLOSSY PHOTO PAPER (4" x 6")	S041706 / S041729
EPSON PREMIUM GLOSSY PHOTO PAPER (A4)	S041285
EPSON PREMIUM SEMIGLOSS PHOTO PAPER (A4)	S041332
EPSON MATTE PAPER - HEAVYWEIGHT (A4)	S041258
EPSON DOUBLE SIDED MATTE PAPER (A4)	S041569
EPSON IRON-ON COOL PEEL TRANSFER PAPER (A4)	S041154

**WARRANTY**

12 MONTHS RETURN TO BASE STANDARD  
OPTIONAL ADDITIONAL 2 YEAR WARRANTY 3YWRX650  
For warranty terms see www.epson.com.au/warranty

As an International ENERGY STAR Partner, Epson has determined that this product meets the International ENERGY STAR guidelines for energy efficiency. Epson is the registered trademark of SEIKO Epson Corporation. Epson STYLUS, PerfectPicture, MicroPiezo, AcuPhoto Halftoning, QuickDry are the trademarks of SEIKO Epson Corporation. All other names and company names used herein are for identification purpose only and may be the trademarks or registered trademarks of their respective owners. Epson disclaims any and all rights in those marks. All print samples shown herein are simulations. Specifications are subject to change without notice.

FOR HIGHEST QUALITY  
DEMAND EPSON  
INKS+PAPERS