

MONOCHROME LASER PRINTER

EPSON *EPL-6100 Laser*



THE HIGH SPEED, NETWORKABLE BUSINESS LASER PRINTER

PROFESSIONAL AND COST-EFFECTIVE
PRINTING FOR TODAY'S BUSINESS

- Up to 16 ppm
- Superior output quality
- True 1200dpi resolution
- Robust and durable

EPSON EPL-6100 LASER

EPSON®

EPSON EPL-6100 LASER PRINTER

High speed performance with professional print quality. It's precisely this combination in a cost-effective unit that businesses have been demanding for years – laser printing solution that delivers on speed, quality, intelligence, durability, versatility, connectivity and flexibility. It's everything that is the EPSON EPL-6100.



SPEED

Modern laser printers in a business setting must meet the needs of the business itself; and speed is definitely one of those needs. The EPSON EPL-6100 delivers on the need for speed. Its 16 ppm capabilities are supported by a powerful 200MHz 64-bit RISC processor and standard RAM that can be boosted to as much as 136MB.

QUALITY

Image is everything and business laser printers need to have the ability to deliver output quality that is better than good. The EPSON EPL-6100 prints quality. While most other printers in this class offer only 600dpi or at best, use processing techniques to simulate higher resolution, the EPL-6100 brings true 1200 x 1200dpi, high-contrast and crisp printing to the workplace.

INTELLIGENCE

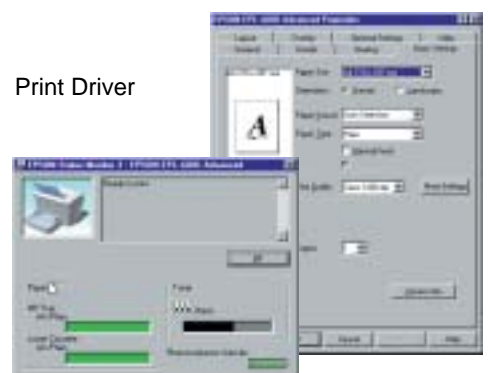
A truly effective workgroup or network laser printer needs to be more than just a printer. The EPSON EPL-6100 is more than just a printer. Its highly intuitive printer driver and status monitor have been designed to ensure printer management is simple and incredibly straightforward. Across the network, consumable levels can be checked, problems identified and settings changed. It's all about intelligent printer management for the intelligent workgroup or network.



600dpi



True 1200dpi



EPSON Status Monitor 3

FLEXIBILITY

Today's laser printers need to be totally flexible when it comes to handling different types of media. The EPSON EPL-6100 packs enormous paper handling flexibility in a small, desktop form factor. Labels, postcards, envelopes and a variety of paper sizes are all handled with total ease; and with the optional 500-sheet tray there's an enormous 750-sheet capacity.



VERSATILITY

For a laser printer to be truly versatile, it must be able to deal with any type of print job effectively. The EPSON EPL-6100 ensures versatility. When configured for Adobe® PostScript® 3™ printing (optional) it becomes an incredibly powerful graphics and page layout printer.

DURABILITY

When a laser printer is used in business, it's important to know that it can take the rigours of the most demanding environments. The EPSON EPL-6100 is built to take in its stride everything that's thrown its way. With a maximum monthly duty cycle of 15,000 pages per month, a photoconductor drum good for 20,000 pages and 6,000 page toner cartridge*, it's the small footprint, rugged printer with the durability for which EPSON products are renowned.

* Initial toner capacity is 3,000 pages. Replacement toner cartridges are 6,000 pages.



Toner Cartridge



Photoconductor Drum

CONNECTIVITY

Laser printers in business need to have the connectivity features that ensure they fit in with the existing environment. The EPSON EPL-6100 has the connectivity features. For direct-to-PC connectivity, the EPL-6100 has cross-platform support with standard IEEE1284 bi-direction parallel and USB interfaces. With the optional 10/100 BaseT network interface card the printer provides its own Print Server capabilities, easing the load on existing server hardware. No mess. No fuss.



USB Interface

SYDNEY
70 Gibbes Street
Chatswood NSW 2067
Tel: (02) 9903 9000
Fax: (02) 9903 9177

MELBOURNE
Level 1
6 Riverside Quay
Southbank VIC 3006
Tel: (03) 9685 6555
Fax: (03) 9686 1016

BRISBANE
Level 3, Waterfront Place
1 Eagle Street
Brisbane QLD 4000
Tel: (07) 3360 0219
Fax: (07) 3360 0299

PERTH
Suite 20, Level 3
1060 Hay Street
West Perth WA 6005
Tel: (08) 9480 0418
Fax: (08) 9480 0443

ADELAIDE
Level 1, Carrington House
61-63 Carrington Street
Adelaide SA 5000
Tel: (08) 8237 0518
Fax: (08) 8237 0519

AUCKLAND
245 Hobson Street
Auckland NZ
Tel: (09) 366 6855
Fax: (09) 366 6865

WELLINGTON
Level 6, City Tower
95 Custom House Quay
Wellington NZ
Tel: (04) 473 3494
Fax: (04) 473 4631

ABN 91 002 625 783
05/02

Visit our website:

www.epson.com.au
www.epson.co.nz

MONOCHROME LASER PRINTER

EPSON *EPL-6100 Laser*



Specifications

PRINTER TYPE	
PRINTING METHOD	Laser beam browse and one constituent dry electrophotographic printing
RESOLUTION	1200dpi 600 or 300dpi with BiRiTech (Bi Resolution Improvement Technology) 1200dpi Class with MicroGray 1200
PRINTING SPEED	16 ppm (A4, 600/300dpi) , 8 ppm (A4, 1200dpi)
FONTS	
LJ(PCL®) Mode	80 Scalable Fonts + 7 Bitmap Fonts
ESC P2 Mode	12 Scalable Fonts + 2 Bitmap Fonts
FX Mode	8 Scalable Fonts + 2 Bitmap Fonts
IBM® Mode	8 Scalable Fonts + 1 Bitmap Font
PAPER HANDLING	
PAPER FEED METHOD	Universal Cassette Type Paper Tray
Capacity:	250 sheets (A4)
Paper Size:	A4, A5, B5, Legal, Letter, Half-Letter, Executive, Government Legal, Government Letter, F4, Monarch, DL, Commercial 10, International B5, C5, C6, Custom (Any size within feedable)
MANUAL FEED:	
Capacity:	1 sheet
Paper Size:	Any size within feedable paper size
500-SHEET LOWER PAPER CASSETTE UNIT (Option)	
Capacity:	500 sheets
Paper Size:	A4
FEEDABLE PAPER DIMENSIONS	
Width:	76mm-216mm
Length:	127mm-356mm (Manual Feed 148mm-356mm)
Paper Thickness:	60 - 163g/m ²
PAPER EJECT	Face down (maximum 100 sheets) Face up (Option) (maximum 20 sheets)
INTERFACES	
STANDARD	IEEE1284 Bi-directional Parallel interface (with Compatibility mode, Nibble mode and ECP mode), Universal Serial Bus (USB) 1.1 compliant Type B Slot (1 slot)
MEMORY	
	8MB (expandable to 136MB by SDRAM SIMM)
WARM-UP TIME	
	21 seconds (from Power On)
FIRST PRINT TIME	
	15 seconds (A4/Letter, 600dpi)
ACOUSTIC NOISE	
STAND-BY	Below 30dB
DURING OPERATION	Below 54dB
CONTROL PANEL	
INDICATORS	3 switches and 6 LED
RELIABILITY	
DURABILITY	5 years or 180,000 sheets, whichever comes first
ENVIRONMENTAL CONDITIONS (OPERATING)	
TEMPERATURE	10-35°C (50-95°F)
HUMIDITY	15-85% RH
POWER REQUIREMENTS	
POWER SUPPLY/FREQUENCY	AC 220V-240V 50-60Hz±3Hz
POWER CONSUMPTION	
Operation:	330Wh average / 668W maximum
Standby Mode:	Below 10Wh

DIMENSIONS	
	399(W) x 435(D) x 265(H)mm
WEIGHT	
	8.4kg (including the photoconductor unit and initial developer cartridge)
SYSTEM REQUIREMENTS (RECOMMENDED)	
PC:	Pentium 100MHz [233MHz], 16MB [64MB], IEEE 1284 Parallel Interface Nibble & ECP or Standard USB (Windows® 98/Me/2000)
OPERATING SYSTEM:	Windows® 95/98/2000/NT 4.0
MAC:	PowerMac™ G3 with standard USB or iMac™ or iBook™, 233MHz, 32MB [64MB], Std Internal USB, Mac™ OS 8.1 to 9.X
PRINTER CONTROL LANGUAGE	
STANDARD	PCL® 5e, PCL® 6, EPSON GL/2, FX, ESC/P2, IBM Mode.
OPTION	Adobe® Postscript® 3™
CONSUMABLES	
DEVELOPER CARTRIDGE	
Lifespan:	6,000 sheets* C13S050087 Note: initial cartridge's lifespan is 3,000 sheets*
PHOTOCONDUCTOR UNIT	
Lifespan:	20,000 sheets* C13S051055
OPTIONS	
500-SHEET LOWER PAPER CASSETTE UNIT A4	C12C813791
FACE UP TRAY	C12C813801
ADOBE® POSTSCRIPT® 3™ Kit	C12C832521
32MB SDRAM	LSDP32MB
64MB SDRAM	LSDP64MB
128MB SDRAM	LSDP128MB
EPSONNet 10/ 100 BASE TX INTERNAL PRINT SERVER	C12C823914
3 YEAR RETURN TO BASE WARRANTY	3YW6100
CONFIGURATIONS	
EPL-6100 LASER PRINTER	C11C479011
EPL-6100 WITH ADOBE® POSTSCRIPT® 3™ + 32MB	EPL-6100P
EPL-6100 WITH 10/ 100 BASE TX INTERNAL PRINT SERVER + 32MB	EPL-6100N
EPL-6100 WITH ADOBE® POSTSCRIPT® 3™, 10/ 100 BASE TX INTERNAL PRINT SERVER + 32MB	EPL-6100NP

Note:

* Approximate number of sheets under conditions of continuous printing on A4/Letter size paper with 5 percent page coverage.



As an international ENERGY STAR Partner, EPSON has determined that this product meets the international ENERGY STAR Program for energy efficiency.



"EPSON ESC/PS stands for EPSON standard code for printers Level 2. This second generation printer control language supports scalable fonts as well as enhances graphics capability. It also provides complete backwards compatibility with EPSON's ESC/P, the standard printer language for dot matrix printing". EPSON is a registered trademark of SEIKO EPSON Corporation. EPSON ESC/P2 is a trademark of SEIKO EPSON Corporation. Adobe and PostScript are trademarks of Adobe Systems Incorporated or its subsidiaries and may be registered in certain jurisdictions. All other product names and other company names used herein are for identification purposes only and may be the trademarks or registered trademarks of their respective owners. EPSON disclaims any and all rights to those marks. Specifications are subject to change without notice.

EPSON®