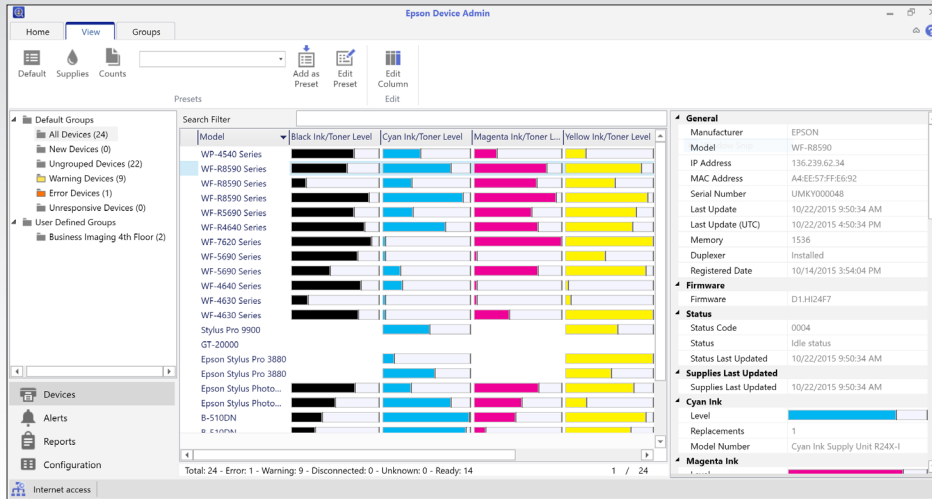


# Epson® Device Admin Fleet Management Solution



Software

Network



## Streamline configuration and management for your Epson printer fleet.

**Automatic device discovery** — reduces time by effectively searching for and discovering Epson networked printers and multifunction devices across multiple network segments

**Remote device configuration** — quickly and easily configure or change device settings for up to 2000 Epson networked printers and multifunction devices

**Advanced monitoring and reporting** — remotely identify and troubleshoot device conditions, track overall usage, create email alerts and generate custom reports

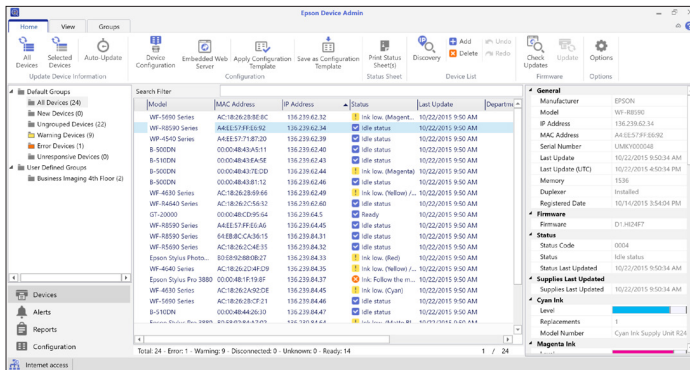
**Intuitive, customizable user interface** — view and control all settings on a single screen, with an advanced ribbon and tab-based graphical user interface

**Group management** — organize devices by geographic location, organization, device types and models

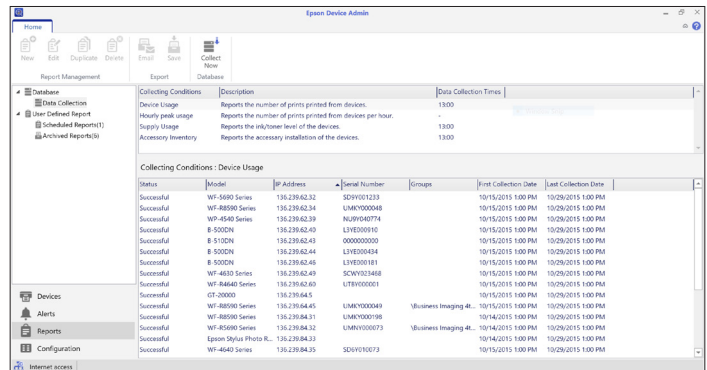
**Automate processes** — easily transfer settings from one printer to the next during deployment or replacement

**Programmable automatic updates** — program the timer to automatically check and update network and printer status, as well as provide firmware update notifications

		EpsonNet Config	EpsonNet Web Config	EpsonNet Setup Manager	Epson Device Admin
<b>Search</b>	Automatic search in the same network segment	✓		✓	✓
	Search with IP range	✓		✓	✓
<b>Monitoring</b>	Supplies information		✓		✓
	Supplies usage status		✓		✓
	Device status		✓		✓
<b>Configuration</b>	Individual device settings	✓	✓	✓	✓
	Multiple device settings			✓	✓
	Data import/export between the same models	✓			✓
	Data import/export between different models				✓
<b>Alert Notification</b>	Supplies		✓		✓
	Error status		✓		✓
<b>Report</b>	Supplies usage				✓
	Device usage status				✓
<b>Firmware Update</b>	Notification of firmware update				✓
	Firmware update				✓
<b>Group Management</b>	Group management for devices				✓
<b>OS Support</b>	Windows® 32-bit/64-bit	✓	✓	✓	✓
	Mac OS®	✓	✓		✓



**Intuitive User Interface.**  
View and control all settings on a single screen.



**Advanced Monitoring and Reporting**  
Create email alerts and generate custom reports.

**Epson America, Inc.**  
3840 Kilroy Airport Way, Long Beach, CA 90806

**Epson Canada Limited**  
185 Renfrew Drive, Markham, Ontario L3R 6G3

**www.epson.com**  
**www.epson.ca**

Specifications and terms are subject to change without notice. EPSON is a registered trademark and EPSON Exceed Your Vision is a registered logomark of Seiko Epson Corporation. Mac OS is a trademark of Apple Inc., registered in the U.S. and other countries. All other product and brand names are trademarks and/or registered trademarks of their respective companies. Epson disclaims and all rights in these marks. Copyright 2015 Epson America, Inc. Com-SS-Oct-13 CPD-51036 12/15