

# PROJECTOR RANGE GUIDE

**EPSON**  
EXCEED YOUR VISION

August 2018



**TRUE  
COLOURS**  
Brighter, vivid projection from Epson

**3LCD**



## ENTRY

### Ready for action in the office, at home or on the go.

Epson's range of business projectors offer vibrant, true-to-life colour for stunning presentations and exciting entertainment. Get instant setup with 3-in-1 USB Plug 'n Play and innovative image alignment features. With HDMI and wireless connectivity, you'll be ready for any situation.



Epson EB-U42

MODEL:	EB-S41*	EB-X41*	EB-W42*	EB-U42
Resolution	SVGA	XGA	WXGA	WUXGA
Lumens Light Output (Colour/White)	3,300/3,300	3,600/3,600	3,600/3,600	3,600/3,600
USB Plug 'n Play	✓	✓	✓	✓
PC Free Presentation	✓	✓	✓	✓
Keystone Correction	Vertical: ±30° Horizontal: ±30°	Vertical: ±30° Horizontal: ±30°	Vertical: ±30° Horizontal: ±30°	Vertical: ±30° Horizontal: ±30°
Zoom	1.35x Digital	1.2x Optical	1.2x Optical	1.2x Optical
Wireless	Optional	Optional	✓	✓
HDMI Connectivity	1	1	1	2
iProjection	Optional	Optional	✓	✓
Miracast	-	-	-	✓
Weight	2.5 kg	2.5 kg	2.5 kg	2.8 kg
Warranty (excluding lamps)	2 yrs	2 yrs	2 yrs	2 yrs
Replacement Lamp RRP (\$AU/\$NZ)	\$64 / \$77	\$64 / \$77	\$64 / \$77	\$64 / \$77

## PORTABLE

Epson's extra thin and lightweight portable projectors are the perfect companion for business people on the go. Weighing in at only 1.8kg, and boasting a broad new range of user friendly functionality including NFC, automatic setup with vertical and horizontal keystone correction, and screen mirroring, it is small enough to fit in one bag along with your notebook PC.



Epson EB-1795F

MODEL:	EB-1780W	EB-1781W*	EB-1785W	EB-1795F
Resolution	WXGA	WXGA	WXGA	1080p
Lumens Light Output (Colour/White)	3,000/3,000	3,200/3,200	3,200/3,200	3,200/3,200
USB Plug 'n Play	✓	✓	✓	✓
PC Free Presentation	✓	✓	✓	✓
Auto Keystone Correction	Vertical: ±45°	Vertical: ±45° Horizontal: ±30°	Vertical: ±45° Horizontal: ±30°	Vertical: ±45° Horizontal: ±30°
Auto Screen Fit and Focus	-	✓	✓	✓
Wireless	✓	✓	✓	✓
Network	Monitor/Control/Presentation (via wireless)	Monitor/Control/Presentation (via wireless)	Monitor/Control/Presentation (via wireless)	Monitor/Control/Presentation (via wireless)
HDMI Connectivity	1	1	1	1
Gesture Presenter	-	✓	✓	✓
Near Field Communication (NFC)	-	✓	✓	✓
Miracast	-	-	✓	✓
Weight	1.8 kg	1.8 kg	1.8 kg	1.8 kg
iProjection	✓	✓	✓	✓
Warranty (excluding lamps)	3 yrs	3 yrs	3 yrs	3 yrs

\* NOT AVAILABLE IN NEW ZEALAND

# MID-RANGE

**Powerful and easy to use, this range of projectors offers low cost of ownership and ease of maintenance.**

Beautiful crisp, clear images make Epson's mid range projectors the ideal choice for use in a wide variety of corporate and education environments.



Epson EB-2265U

MODEL:	EB-970	EB-980W	EB-990U	EB-2247U
Resolution	XGA	WXGA	WUXGA	WUXGA
Lumens Light Output (Colour/White)	4,000/4,000	3,800/3,800	3,800/3,800	4,200/4,200
USB Plug 'n Play	✓	✓	✓	✓
PC Free Presentation	✓	✓	✓	✓
Keystone Correction	Vertical: ±30° Horizontal: ±30°	Vertical: ±30° Horizontal: ±30°	Vertical: ±30° Horizontal: ±30°	Vertical: ±30° Horizontal: ±30°
Zoom	1.6x Optical	1.6x Optical	1.6x Optical	1.6x Optical
Speaker	16 W	16 W	16 W	16 W
Wireless	Optional	Optional	Optional	✓
HDMI Connectivity	2	2	2	2
Miracast	-	-	-	✓
iProjection	Optional	Optional	Optional	✓
Network	Monitor/Control/Presentation	Monitor/Control/Presentation	Monitor/Control/Presentation	Monitor/Control/Presentation
Replacement Lamp RRP (\$AU/\$NZ)	\$64/\$77	\$64/\$77	\$64/\$77	\$64/\$77

## iPROJECTION Wirelessly Project from your Chromebook, iOS, or Android™ mobile device with the Epson iProjection App.

This application allows you to travel lightly and present anywhere from your devices. The Epson iProjection app will enable you to have the wireless freedom you've come to expect from your mobile device. The app is easy to use and navigate with intuitive menu options that help bring Chromebook, iOS, and Android™ content to the big screen. iProjection for Chromebooks supports fully mirrored display of all your Chromebook content including Google Docs, Slides, Sheets, and Chrome browser. When used in conjunction with Moderator function the iProjection App gives teachers the ability to display up to four Chromebook™ computers simultaneously.



MODEL:	EB-2055	EB-2155W/EB-2165W	EB-2250U	EB-2265U
Resolution	XGA	WXGA	WUXGA	WUXGA
Lumens Light Output (Colour/White)	5,000/5,000	5,000/5,000 (2155W) 5,500/5,500 (2165W)	5,000/5,000	5,500/5,500
USB Plug 'n Play	✓	✓	✓	✓
PC Free Presentation	✓	✓	✓	✓
Keystone Correction	Vertical: ±30° Horizontal: ±30°	Vertical: ±30° Horizontal: ±30°	Vertical: ±30° Horizontal: ±30°	Vertical: ±30° Horizontal: ±30°
Screen Fit and Focus Help	✓	✓	✓	✓
Zoom	1.6x Optical	1.6x Optical	1.6x Optical	1.6x Optical
Speaker	16 W	16 W	16 W	16 W
Wireless	✓	✓	Optional	✓
Miracast	-	Not included (2155W) Included (2165W)	-	✓
HDBT Connectivity	-	Not included (2155W) Included (2165W)	-	✓
Gesture Presenter	✓	✓	✓	✓
HDMI Connectivity	2	2	2	2
iProjection	✓	✓	Optional	✓
Network	Monitor/Control/Presentation	Monitor/Control/Presentation	Monitor/Control/Presentation	Monitor/Control/Presentation
Replacement Lamp RRP (\$AU/\$NZ)	\$135/\$165	\$135/\$165	\$135/\$165	\$135/\$165

# SHORT THROW AND ULTRA SHORT THROW

With an Epson short throw or ultra short throw projector, presenters are able to deliver rich multimedia content without the distraction of glare in their eyes, or shadows on the board disrupting the vision of their audience. Make the most of your available space with Epson's range of innovative projectors.



Epson EB-535W

MODEL:	EB-520	EB-525W*	EB-535W
Resolution	XGA	WXGA	WXGA
Lumens Light Output (Colour/White)	2,700/2,700	2,800/2,800	3,400/3,400
Projection Type	Short Throw	Short Throw	Short Throw
Throw Ratio	0.55 (Zoom: Wide), 0.74 (Zoom: Tele)	0.48 (Zoom: Wide), 0.65 (Zoom: Tele)	0.48 (Zoom: Wide), 0.65 (Zoom: Tele)
Mount	Optional (ELPMB45)	Optional (ELPMB45)	Optional (ELPMB45)
USB Plug 'n Play	✓	✓	✓
Keystone Correction	Vertical: ±15° Horizontal: ±15°	Vertical: ±15° Horizontal: ±15°	Vertical: ±15° Horizontal: ±15°
Zoom	1.35x Digital	1.35x Digital	1.35x Digital
Speaker	16 W	16 W	16 W
Wireless	Optional	Optional	Optional
Network	Monitor/Control/Presentation	Monitor/Control/Presentation	Monitor/Control/Presentation
HDMI Connectivity	1	1	1
iProjection	Optional	Optional	Optional
Replacement Lamp RRP (\$AU/\$NZ)	\$99/\$119	\$99/\$119	\$99/\$119

MODEL:	EB-675W*	EB-680	EB-685W	EB-700U
Light Source	Lamp	Lamp	Lamp	Laser
Resolution	WXGA	XGA	WXGA	WUXGA
Lumens Light Output (Colour/White)	3,200/3,200	3,500/3,500	3,500/3,500	4,000/4,000
Projection Type	Ultra Short Throw	Ultra Short Throw	Ultra Short Throw	Ultra Short Throw
Throw Ratio	0.28 (Zoom: Wide), 0.37 (Zoom: Tele)	0.32 (Zoom: Wide), 0.43 (Zoom: Tele)	0.28 (Zoom: Wide), 0.37 (Zoom: Tele)	0.27 (Zoom: Wide), 0.37 (Zoom: Tele)
Mount	Optional (ELPMB46)	Optional (ELPMB46)	Optional (ELPMB46)	Optional (ELPMB53)
Keystone Correction	Vertical: ±3° Horizontal: ±3°	Vertical: ±3° Horizontal: ±3°	Vertical: ±3° Horizontal: ±3°	Vertical: ±3° Horizontal: ±3°
Zoom	1.35x Digital	1.35x Digital	1.35x Digital	1.35x Digital
Speaker	16 W	16 W	16 W	16 W
Wireless	Optional (ELPAP10)	Optional (ELPAP10)	Optional (ELPAP10)	Optional (ELPAP10)
Network	Monitor/Control/Presentation	Monitor/Control/Presentation	Monitor/Control/Presentation	Monitor/Control/Presentation
HDMI Connectivity	3	3	3	3
iProjection	Optional	Optional	Optional	Optional
Replacement Lamp RRP (\$AU/\$NZ)	\$83/\$99	\$83/\$99	\$83/\$99	-

# EDUCATION INTERACTIVE

As the best-selling projector manufacturer in the world, Epson has a solution for every education scenario.

Built with image quality and reliability in mind, Epson's interactive projectors enhance communication, inspire collaboration and offer a low total cost of ownership.



MODEL:	EB-675Wi*/685Wi	EB-695Wi	EB-696Ui	EB-710Ui
Light Source	Lamp	Lamp	Lamp	Laser
Resolution	WXGA	WXGA	WUXGA	WUXGA
Lumens Light Output (Colour/White)	3,200/3,200 (675Wi) 3,500/3,500 (685Wi)	3,500/3,500	3,800/3,800	4,000/4,000
Projection Type	Ultra Short Throw	Ultra Short Throw	Ultra Short Throw	Ultra Short Throw
Throw Ratio	0.28 (Zoom: Wide), 0.37 (Zoom: Tele)	0.28 (Zoom: Wide), 0.37 (Zoom: Tele)	0.27 (Zoom: Wide), 0.37 (Zoom: Tele)	0.27 (Zoom: Wide), 0.37 (Zoom: Tele)
Interactivity	Pen Only	Finger and Pen	Finger and Pen	Finger and Pen
Mount	Optional (ELPMB46)	Optional (ELPMB46)	Included (ELPMB46)	Included (ELPMB53)
PC Free Annotation	✓	✓	✓	✓
Simultaneous Multi User	✓	✓	✓	✓
Seamless Interactive	✓	✓	✓	✓
Split Screen	✓	✓	✓	✓
SMART® Notebook™ Software	✓	✓	✓	✓
Keystone Correction	Vertical: ±3° Horizontal: ±3°	Vertical: ±3° Horizontal: ±3°	Vertical: ±3° Horizontal: ±3°	Vertical: ±3° Horizontal: ±3°
Zoom	1.35x Digital	1.35x Digital	1.35x Digital	1.35x Digital
Speaker	16 W	16 W	16 W	16 W
Wireless	Optional (ELPAP10)	Optional (ELPAP10)	Optional (ELPAP10)	Optional (ELPAP10)
Network	Monitor/Control/Presentation	Monitor/Control/Presentation	Monitor/Control/Presentation	Monitor/Control/Presentation
HDMI Connectivity	3	3	3	3
iProjection	Optional	Optional	Optional	Optional
Replacement Lamp RRP (\$AU/\$NZ)	\$83/\$99	\$83/\$99	\$83/\$99	-

## DOCUMENT CAMERA CONTROL

Connect the Epson ELP-DC21 document camera to an interactive EB-600 Series projector to easily capture and displays books, 3D objects and experiments. You can also add annotations directly to a projected live image without the need of a PC. To simplify the process you can operate the document camera from the toolbar on the projection screen.



\*EB-675Wi NOT AVAILABLE IN NEW ZEALAND

# BUSINESS INTERACTIVE

MeetingMate  
collaborate. create. share.



**MeetingMate™ interactive projectors provide the complete solution for any meeting room.**

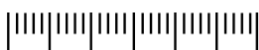
A perfect alternative to copyboards and other presentation equipment, MeetingMate™ combines multiple devices into one simple device that enhances collaboration through interactive functionality, idea creation and content sharing — all without a PC!

MODEL:	EB-1450Ui	EB-1460Ui	EB-1470Ui
Light Source	Lamp	Lamp	Laser
Resolution	WUXGA	WUXGA	WUXGA
Lumens Light Output (Colour/White)	3,800/3,800	4,400/4,400	4,000/4,000
Projection Type	Ultra Short Throw	Ultra Short Throw	Ultra Short Throw
Throw Ratio	0.27 (Zoom: Wide), 0.37 (Zoom: Tele)	0.27 (Zoom: Wide), 0.37 (Zoom: Tele)	0.27 (Zoom: Wide), 0.37 (Zoom: Tele)
Interactivity	Finger and Pen	Finger and Pen	Finger and Pen
Mount	Included (ELPMB46)	Included (ELPMB46)	Included (ELPMB53)
PC Free Whiteboard function	✓	✓	✓
Save, Print, Email	✓	✓	✓
Control Pad	✓	✓	✓
Split screen	✓	✓	✓
Wireless Interactive and Projection	✓	✓	✓
Miracast	-	✓	✓
Remote Desktop	✓	✓	✓
Multi-location Remote Interactive	Up to 4 locations	Up to 4 locations	Up to 4 locations
Keystone Correction	Vertical: ±3° Horizontal: ±3°	Vertical: ±3° Horizontal: ±3°	Vertical: ±3° Horizontal: ±3°
Zoom	1.35x Digital	1.35x Digital	1.35x Digital
Speaker	16 W	16 W	16 W
Wireless	✓	✓	✓
Network	Monitor/Control/Presentation	Monitor/Control/Presentation	Monitor/Control/Presentation
DVI-D Out	1	1	1
HDMI Connectivity	2	2	2
iProjection	✓	✓	✓
Replacement Lamp RRP (\$AU/\$NZ)	\$83/\$99	\$83/\$99	-

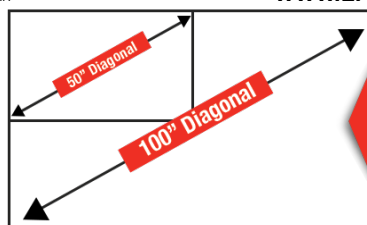
\* ALL DEVICES MUST BE CONNECTED ON THE SAME NETWORK

[WWW.EPSON.COM.AU/GOBIGWITHEPSON](http://WWW.EPSON.COM.AU/GOBIGWITHEPSON)

Size Matters



Every Inch Matters



Display sizes are measured diagonally, from corner to corner. As a result, a **100" Display** is actually **4 times** larger than a **50" Display**.\*

[WWW.EPSON.COM.AU/GOBIGWITHEPSON](http://WWW.EPSON.COM.AU/GOBIGWITHEPSON)

\*MEASURED BASED ON TOTAL VIEWING AREA OF 50" - 0.68 M<sup>2</sup> (0.62 M X 1.11 M) AND 100" - 2.76 M<sup>2</sup> (1.25 M X 2.21 M) IN 10:9 SCREEN ASPECT RATIO.

# LARGE VENUE

**Powerful performers that are easy to install, manage and maintain.** Epson's range of installation projectors offers up to 25,000 lumens of colour/white light output for captivating presentations in virtually any venue. Featuring WUXGA resolution and innovative 3LCD technology, these projectors deliver brilliant images in lecture halls, conference centres and entertainment venues.



Epson EB-L1755U



MODEL (G-SERIES):	EB-G7800NL	EB-G7000WNL	EB-G7200WNL
Light Source	Lamp	Lamp	Lamp
Resolution	XGA	WXGA	WXGA
Lumens Light Output (Colour/White)	8,000/8,000	6,500/6,500	7,500/7,500
Lens Shift (Powered)	Vertical: $\pm 57\%$ Horizontal: $\pm 30\%$	Vertical: $\pm 67\%$ Horizontal: $\pm 30\%$	Vertical: $\pm 67\%$ Horizontal: $\pm 30\%$
Zoom (LM08 Lens)	1.6x Optical	1.6x Optical	1.6x Optical
Lens Memory	10 Positions	10 Positions	10 Positions
Operating Hours <sup>1</sup>	24/7	24/7	24/7
Operating Angle	360°	360°	360°
Wireless	Optional	Optional	Optional
Network	Monitor/Control/Presentation	Monitor/Control/Presentation	Monitor/Control/Presentation
Digital Connectivity	HDMI/DVI-D/HDBaseT	HDMI/DVI-D/HDBaseT	HDMI/DVI-D/HDBaseT
Frame Interpolation	✓	✓	✓
Edge Blending	✓	✓	✓
Crestron RoomView/AMX Device Discovery	✓	✓	✓
HDBaseT	✓	✓	✓
Lens Options	10	10	10
Warranty <sup>1</sup> (excluding lamps)	3 yrs	3 yrs	3 yrs

MODEL (G-SERIES):	EB-G7400UNL	EB-G7500UNL	EB-G7905UNL
Light Source	Lamp	Lamp	Lamp
Resolution	WUXGA	WUXGA	WUXGA
Lumens Light Output (Colour/Light)	5,500/5,500	6,500/6,500	7,000/7,000
Lens Shift (Powered)	Vertical: $\pm 67\%$ Horizontal: $\pm 30\%$	Vertical: $\pm 67\%$ Horizontal: $\pm 30\%$	Vertical: $\pm 67\%$ Horizontal: $\pm 30\%$
Zoom (LM08 Lens)	1.6x Optical	1.6x Optical	1.6x Optical
Lens Memory	10 Positions	10 Positions	10 Positions
Operating Hours <sup>1</sup>	24/7	24/7	24/7
Operating Angle	360°	360°	360°
Wireless	Optional	Optional	Optional
Network	Monitor/Control/Presentation	Monitor/Control/Presentation	Monitor/Control/Presentation
Digital Connectivity	HDMI/DVI-D/HDBaseT	HDMI/DVI-D/HDBaseT	HDMI/DVI-D/HDBaseT
Frame Interpolation	✓	✓	✓
Edge Blending	✓	✓	✓
Crestron RoomView/AMX Device Discovery	✓	✓	✓
HDBaseT	✓	✓	✓
4K Enhancement	✓	✓	✓
Lens Options	10	10	10
Warranty <sup>1</sup> (excluding lamps)	3 yrs	3 yrs	3 yrs

<sup>1</sup> WARRANTED FOR 15,000 HOURS IN 24/7 USE

# LARGE VENUE

MODEL (L-SERIES):	EB-L510U	EB-L610W	EB-L610U	EB-L615U
Light Source	Laser	Laser	Laser	Laser
Model Colour	White	White	White	Black
Resolution	WUXGA	WXGA	WUXGA	WUXGA
Lumens Light Output (Colour/White)	5,000/5,000	6,000/6,000	6,000/6,000	6,000/6,000
Lens Shift (Manual)	Vertical: ±50% Horizontal: ±20%	Vertical: ±50% Horizontal: ±20%	Vertical: ±50% Horizontal: ±20%	Vertical: ±50% Horizontal: ±20%
Operating Angle	360°	360°	360°	360°
Zoom	1.6x Optical	1.6x Optical	1.6x Optical	1.6x Optical
Wireless	Optional	Optional	✓	✓
Network	Monitor/Control/Presentation	Monitor/Control/Presentation	Monitor/Control/Presentation	Monitor/Control/Presentation
Speaker	10 W	10 W	10 W	10 W
HDMI Connectivity	2	2	2	2
Crestron RoomView/AMX Device Discovery	✓	✓	✓	✓
HDBaseT	✓	✓	✓	✓
Content Playback	✓	✓	✓	✓
Warranty	5 yrs	5 yrs	5 yrs	5 yrs

## G AND L SERIES LENSES (16:10 ASPECT RATIO)

Model Name	ELPLX01	ELPLU03	ELPLU04	ELPLM08	ELPLM15	ELPLM10	ELPLM11	ELPLW05	ELPLW06	ELPLL08
	Ultra Short Throw Lens	Short Throw Lens #1	Short Throw Lens #2	Middle Throw Lens #1	Middle Throw Lens #2	Middle Throw Lens #3	Middle Throw Lens #4	Wide Throw Lens #1	Wide Throw Lens #2	Long Throw Lens
Zoom Ratio (excluding EB-L1505UH/1755U)	1x Optical	1.2x Optical	1.2x Optical	1.6x Optical	1.6x Optical	1.5x Optical	1.5x Optical	1.4x Optical	1.4x Optical	1.4x Optical
Zoom Ratio (EB-L1505UH/1755U)	N/A	1.2x Optical	1.2x Optical	N/A	1.6x Optical	1.5x Optical	1.5x Optical	1.4x Optical	1.4x Optical	1.4x Optical
Throw Ratio (excluding EB-L1505UH/1755U)	0.35	0.65 - 0.78	0.87 - 1.05	1.44 - 2.32	2.16 - 3.48	3.32 - 5.06	4.85 - 7.38	1.04 - 1.46	1.62 - 2.22	7.21 - 10.11
Throw Ratio (EB-L1505U/1755U)	N/A	0.48 - 0.57	0.64 - 0.77	N/A	1.57 - 2.56	2.42 - 3.71	3.54 - 5.41	0.77 - 1.07	1.19 - 1.62	5.27 - 7.41

ZOOM AND THROW RATIOS FOR THE EB-L1755UNL ARE NOT DISPLAYED. EB-L2500UNL LENS OPTIONS ARE NOT SPECIFIED IN THIS GUIDE

MODEL (L-SERIES):	EB-L1000UNL	EB-L1100UNL	EB-L1200UNL	EB-L1300UNL
Light Source	Laser	Laser	Laser	Laser
Resolution	WUXGA	WUXGA	WUXGA	WUXGA
Lumens Light Output (Colour/White)	5,000/5,000	6,000/6,000	7,000/7,000	8,000/8,000
Lens Shift (Powered)	Vertical: ±67% Horizontal: ±30%	Vertical: ±67% Horizontal: ±30%	Vertical: ±67% Horizontal: ±30%	Vertical: ±67% Horizontal: ±30%
Zoom	1.6x Optical (LM08)	1.6x Optical (LM08)	1.6x Optical (LM08)	1.6x Optical (LM08)
Lens Memory	10 Positions	10 Positions	10 Positions	10 Positions
Operating Hours <sup>2</sup>	24/7	24/7	24/7	24/7
Operating Angle	360°	360°	360°	360°
Wireless	Optional	Optional	Optional	Optional
Network	Monitor/Control/Presentation	Monitor/Control/Presentation	Monitor/Control/Presentation	Monitor/Control/Presentation
Digital Connectivity	HDMI/DVI-D/HDBaseT	HDMI/DVI-D/HDBaseT	HDMI/DVI-D/HDBaseT	HDMI/DVI-D/HDBaseT
Frame Interpolation	✓	✓	✓	✓
Edge Blending	✓	✓	✓	✓
Crestron RoomView / AMX Device Discovery	✓	✓	✓	✓
HDBaseT	✓	✓	✓	✓
4K Enhancement	✓	✓	✓	✓
Lens Options	10	10	10	10
Warranty <sup>2</sup>	5 yrs	5 yrs	5 yrs	5 yrs



# LARGE VENUE

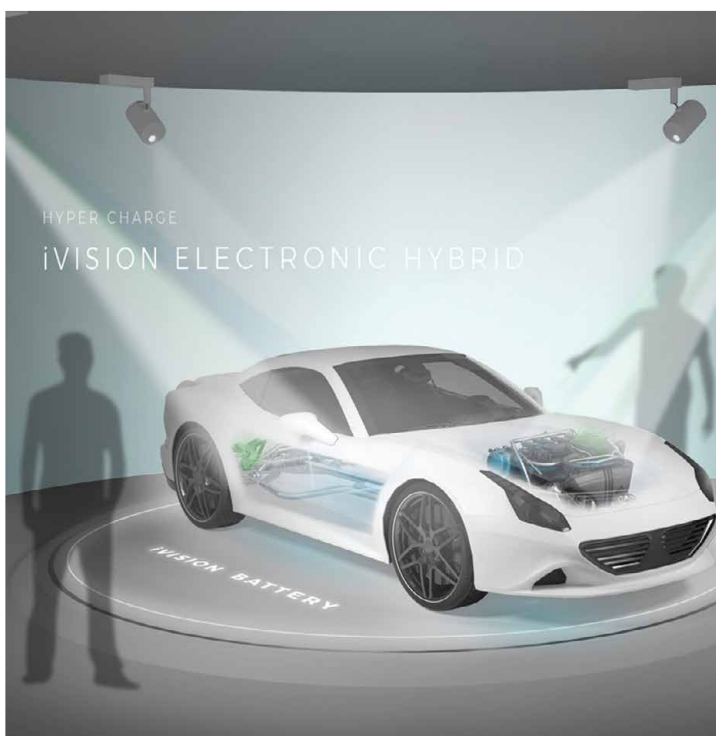
MODEL (L-SERIES):	EB-L1405UNL	EB-L1505UNL	EB-L1755UNL	EB-L25000UNL
Light Source	Laser	Laser	Laser	Laser
Resolution	WUXGA	WUXGA	WUXGA	WUXGA
Lumens Light Output (Colour/White)	8,000/8,000	12,000/12,000	15,000/15,000	25,000/25,000
Lens Shift (Powered)	Vertical: ±67% Horizontal: ±30%	Vertical: ±60% Horizontal: ±18%	Vertical: ±60% Horizontal: ±18%	Vertical: ±65% Horizontal: ±30%
Zoom	1.6x Optical (LM08)	1.6x Optical (LM15)	1.6x Optical (LM15)	1.35x Optical (LM12*)
Lens Memory	10 Positions	10 Positions	10 Positions	10 Positions
Operating Hours <sup>2</sup>	24/7	24/7	24/7	24/7
Operating Angle	360°	360°	360°	360°
Wireless	Optional	Optional	Optional	Optional
Network	Monitor/Control/Presentation	Monitor/Control/Presentation	Monitor/Control/Presentation	Monitor/Control/Presentation
Digital Connectivity	HDMI/DVI-D/HDBaseT/SDI	HDMI/DVI-D/HDBaseT/SDI	HDMI/DVI-D/HDBaseT/SDI	HDMI/DVI-D/HDBaseT/SDI
Edge Blending	✓	✓	✓	✓
Crestron RoomView/AMX Device Discovery	✓	✓	✓	✓
Art-Net	✓	✓	✓	✓
4K Enhancement	✓	✓	✓	✓
Lens Options	10	10	10	8*
Warranty <sup>3</sup>	5 yrs	5 yrs	5 yrs	5 yrs

## LIGHTSCENE

Transform your space into a vivid, captivating experience with Epson's new LightScene laser projectors. Combining Epson's 3LCD laser technology with a fully sealed optical engine, LightScene projectors deliver up to 20,000 hours of virtually maintenance-free operation in a sleek, spotlight design. Have the flexibility to illuminate and project onto virtually any surface or material to create stunning displays and immersive environments, making it the perfect fit for any setting – from retail, hospitality, and event spaces to showrooms and museums.



Epson EV-100



MODEL:	EV-100	EV-105
Light Source	Laser	Laser
Model Colour	White	Black
Resolution	WXGA	WXGA
Lumens Light Output (Colour/White)	2,000/2,000	2,000/2,000
Keystone	Vertical: ±45° Horizontal: ±40°	Vertical: ±45° Horizontal: ±40°
Zoom Ratio	Optical zoom: 1 - 1.58 Digital zoom: 1 - 1.4	Optical zoom: 1 - 1.58 Digital zoom: 1 - 1.4
Edge Blending	✓	✓
Crestron Connected	✓	✓
Art-Net	✓	✓
Content Playback	✓	✓
Wireless	✓	✓
Warranty <sup>4</sup>	5 yrs	5 yrs

# HOME THEATRE

Experience rich cinematic adventures at home with Epson home cinema projectors. Whether you enjoy movies, games, or sporting events, every image is sure to pop off the screen with state-of-the-art, innovative projector features.



Epson EH-TW9300W

MODEL:	EH-TW5600	EH-TW6700	EH-TW6700W	EH-TW8300
Resolution	1080p	1080p	1080p	1080p (4K Enhancement)
Lumens Light Output (Colour/White)	2,500/2,500	3,000/3,000	3,000/3,000	2,500/2,500
Contrast Ratio	35,000:1	70,000:1	70,000:1	1,000,000:1
3D Capable	✓	✓	✓	✓
3D Glasses	Optional	Includes 1 Pair	Includes 1 Pair	Optional
Keystone Correction	Vertical: ±30° Horizontal: ±30°	Vertical: ±30° Horizontal: ±30°	Vertical: ±30° Horizontal: ±30°	Vertical: ±30°
Lens Shift	Vertical: ±15%	Vertical: ±60% Horizontal: ±24%	Vertical: ±60% Horizontal: ±24%	Vertical: ±96.3% Horizontal: ±47.1%
Picture in Picture	-	✓	✓	✓
Built in Speakers	10 W	2 x 10 W	2 x 10 W	-
HDMI Connectivity	2	2	2	2
WirelessHD	-	-	✓	-

## WIRELESS HD

Eliminate cable clutter and simplify

**installations!** WirelessHD enables the transfer of HDMI digital signals without compression or deterioration. You can now wirelessly stream Full HD and 3D content directly to your Epson projector, giving you high quality images every time.



## EPSON 3D

Enjoy thrilling 3D adventures right in the comfort of your living room.



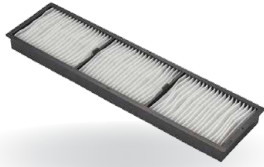
Featuring Epson's Bright 3D Drive technology, these home theatre projectors put you right in the middle of the action. Epson's drive system minimises the blackout time of 3D glasses and provides greater brightness when viewing 3D content.

MODEL:	EH-TW9300	EH-TW9300W*	EH-LS10500	EH-LS100
Resolution	1080p (4K Enhancement)	1080p (4K Enhancement)	1080p (4K Enhancement)	WUXGA
Light Source	Lamp	Lamp	Laser	Laser
Lumens Light Output (Colour/White)	2,500/2,500	2,500/2,500	1,500/1,500	4,000/4,000
Contrast Ratio	1,000,000:1	1,000,000:1	Absolute Black Full White 1,500lm/Full Black 0lm	2,500,000:1
HDR Capable	✓	✓	✓	-
Keystone Correction	Vertical: ±30°	Vertical: ±30°	Vertical: ±30°	Vertical: ±3% Horizontal: ±3%
Lens Shift (Powered)	Vertical: ±96.3% Horizontal: ±47.1%	Vertical: ±96.3% Horizontal: ±47.1%	Vertical: ±90% Horizontal: ±40%	N/A
Lens Memory	10 Positions	10 Positions	10 Positions	N/A
Picture in Picture	✓	✓	✓	-
HDMI Connectivity	2	2	2	3
THX3D and ISF Certification	✓	✓	✓	N/A
WirelessHD	-	✓	-	-
Warranty (excluding lamps)	3 yrs (inc lamp)	3 yrs (inc lamp)	3 yrs (inc laser)	3 yrs (inc laser)

\* EH-TW9300W NOT AVAILABLE IN NEW ZEALAND

† WARRANTY DIFFERS IN NEW ZEALAND

# OPTIONS AND ACCESSORIES



## Air Filters

Regularly replace the air filter in your Epson projector in order to maintain image quality and to ensure longevity.



## Lamps

Order genuine Epson lamps to ensure that you achieve the best possible image quality and colour reproduction.



## Speakers

Enhance the audio experience with the Epson ELP-SP02 powered speaker set.



## Control Pad

A simple cable management solution from Epson. Ideal for classrooms and meeting spaces.



## HDBase-T

Eliminate the need to run expensive cables and signal repeater hardware by using the Epson HDBaseT transmitter.



## Portable Screen

Epson portable, light weight 80 inch screen is the perfect display solution for your home or office.



## Ceiling Mounts

Ceiling mounts to suit all models of Epson projectors.



## Wireless LAN Adapter

A simple yet powerful solution to enabling wireless connectivity to your Epson projector (optional models only).

## EPSON CoverPlus SERVICE PACK OPTIONS

### RETURN TO BASE

#### *Epson CoverPlus* SERVICE PACK

These service packs offer repair by an Epson Authorised Service Agent, with the cost of all parts and labour covered.

This is available as either a 1, 2, or 3 year option.



### RAPID EXCHANGE

#### *Epson CoverPlus* SERVICE PACK

With this service pack, a faulty product can be exchanged with a functional equivalent product the next day.

5 year Rapid Exchange cover is available with selected models.

### ON-SITE

#### *Epson CoverPlus* SERVICE PACK

Enjoy on-site repair of your product by an Epson Authorised Service Agent.

This pack is available with selected high-end projector models.



Please contact your dealer about **Epson CoverPlus** today.  
For more information visit: [www.epson.com.au/shoponline/coverplus](http://www.epson.com.au/shoponline/coverplus)

**Epson CoverPlus**

*Fast. Reliable. Professional.*

# COLOUR LIGHT OUTPUT

## KNOW YOUR PROJECTOR LUMENS

# TRUE COLOURS

Brighter, vivid projection from Epson

## WHAT IS COLOUR BRIGHTNESS?

Many people are in the dark about colour brightness. Of the numerous specifications to consider when purchasing a projector, this measure of colour light output is among the most important.

## COLOUR BRIGHTNESS

is a scientifically set global standard that measures a projector's Colour Light Output. This measure is crucial to gauge the performance of a projector.

LOW COLOUR BRIGHTNESS

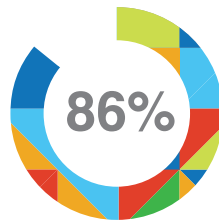
HIGH COLOUR BRIGHTNESS

Low Colour Brightness can result in images that are 1/3 as bright!

## COLOUR BRIGHTNESS COUNTS

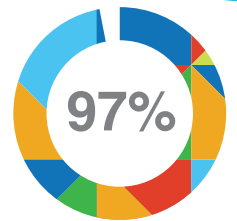
Colour is the keystone of any memorable presentation, increasing memory significantly over monochromatic visuals

86% of presentations contain colour



Colours at peak brightness and saturation attract the most attention

97% of consumers agree that brightness is a key component of image quality



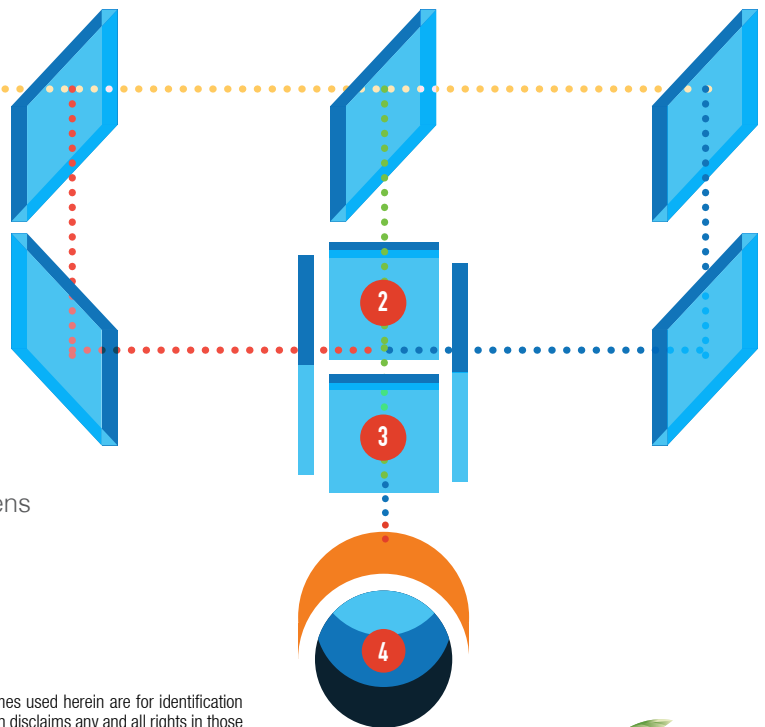
## 3LCD TECHNOLOGY



**Not All Projectors Are Created Equal.** Using 3LCD technology means that you don't have to sacrifice the vibrancy of rich multimedia by projecting a single colour at a time.

### HERE'S HOW IT WORKS:

- 1 A light source projects white light onto a combination of mirrors that split the light into three primary colours: red, green and blue
- 2 Each primary colour passes through a dedicated LCD panel
- 3 The three colour images are combined using a prism to form a full-colour image consisting of millions of colours
- 4 The vibrant, full-colour image passes through a lens and is projected onto a screen



Epson is the registered trademark of Seiko Epson Corporation. All other names and company names used herein are for identification purpose only and may be the trademarks or registered trademarks of their respective owners. Epson disclaims any and all rights in those marks. All print samples shown herein are simulations. Specifications are subject to change without notice.

Better Products for a Better Future™



Download QR Reader and scan to learn more

**EPSON AUSTRALIA**  
3 Talavera Road  
North Ryde NSW 2113  
Tel: (02) 8899 3666  
[www.epson.com.au](http://www.epson.com.au)

**EPSON NEW ZEALAND**  
Level 2, 7-9 Fanshawe Street  
Auckland, 1010  
Tel: (09) 366 6855  
[www.epson.co.nz](http://www.epson.co.nz)

**EPSON**  
EXCEED YOUR VISION

ABN 91 002 625 783

09/18