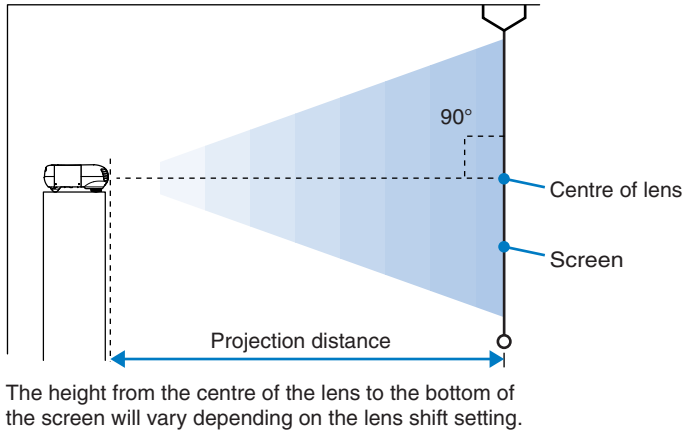


Setup Guide

1 ▶ Setting up

● Adjust the projection size.

The size of the projected image is basically determined by the distance from the projector's lens to the screen.

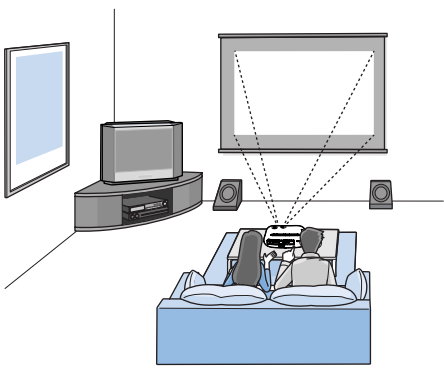


Refer to the table below to the projector so that the images are projected onto the screen at the optimum size.

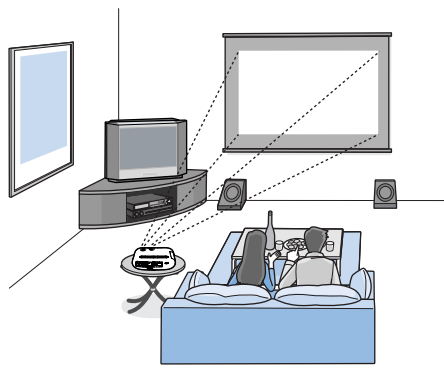
Units: cm (in.)		Units: cm (ft.)	
16:9 screen size		Projection distance	
		Shortest (Zoom adjustment: Wide)	Longest (Zoom adjustment: Tele)
30"	66 × 37 (26 × 14)	87–133 (2.9–4.4)	
40"	89 × 50 (34 × 19)	118–179 (3.9–5.9)	
60"	130 × 75 (52 × 29)	179–270 (5.9–8.9)	
70"	154 × 87 (61 × 34)	209–316 (6.9–10.4)	
80"	180 × 100 (69 × 39)	240–361 (7.9–11.9)	
100"	220 × 120 (87 × 49)	301–452 (9.9–14.8)	
200"	440 × 250 (174 × 98)	606–909 (19.9–29.8)	
300"	660 × 370 (261 × 147)	911–1365 (29.9–44.8)	
Units: cm (in.)		Units: cm (ft.)	
4:3 screen size		Projection distance	
		Shortest (Zoom adjustment: Wide)	Longest (Zoom adjustment: Tele)
30"	61 × 46 (24.0 × 18.1)	108–164 (3.6–5.4)	
40"	81 × 61 (31.9 × 24.0)	146–220 (4.8–7.2)	
60"	120 × 90 (47.2 × 35.4)	221–332 (7.2–10.9)	
70"	142 × 106 (55.9 × 42.0)	258–388 (8.5–12.7)	
80"	160 × 120 (63.0 × 47.2)	295–443 (9.7–14.6)	
100"	200 × 150 (78.7 × 59.1)	370–555 (12.2–18.2)	
200"	410 × 300 (161.4 × 118.1)	745–1114 (24.4–36.5)	
300"	610 × 460 (240.2 × 181.1)	1119–1672 (36.7–54.9)	

■ Projection methods

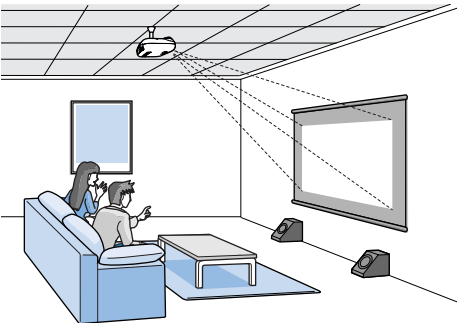
When projecting from directly in front



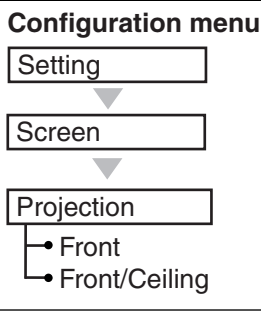
When projecting from the side of the screen



When projecting from a ceiling



When suspending the projector from a ceiling, change the configuration menu settings.



- Avoid setting the projector up in places which are very dusty such as bedrooms.
Clean the air filter at least once every 3 months.
Clean the air filter more frequently if using the projector in a dusty environment.

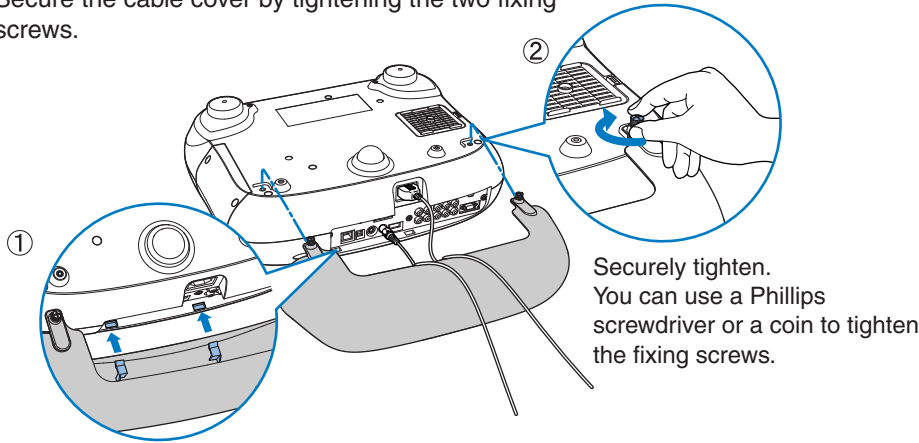
- When installing against a wall, leave a space of 20 cm (7.9 in.) or more between the projector and the wall.
- A special method of installation is required in order to suspend the projector from a ceiling. Please contact your dealer if you would like to use this installation method.

■ Installing the cable cover

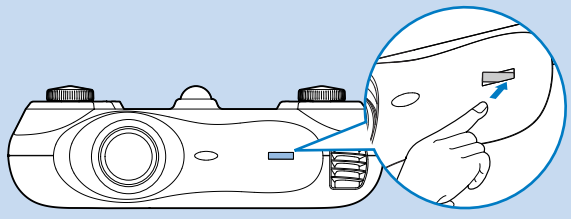
Once the video equipment or computer has been connected, you can then install the cable cover that is included with the projector to cover the connectors for a neat appearance.

Installation

- 1 Insert the two tabs inside the cable cover into the notches in the projector.
- 2 Secure the cable cover by tightening the two fixing screws.

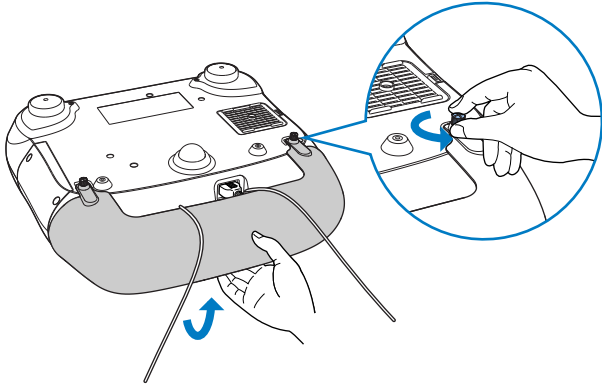


If installing on a ceiling, you can change the orientation of the EPSON logo plate that would otherwise be upside-down. Press your finger against the air exhaust end of the plate. The opposite end of the plate will lift up, so that you can pull it out slightly and turn it around.



Removal

Loosen the fixing screws until they come away from the projector, and then lift up the cable cover to remove it.



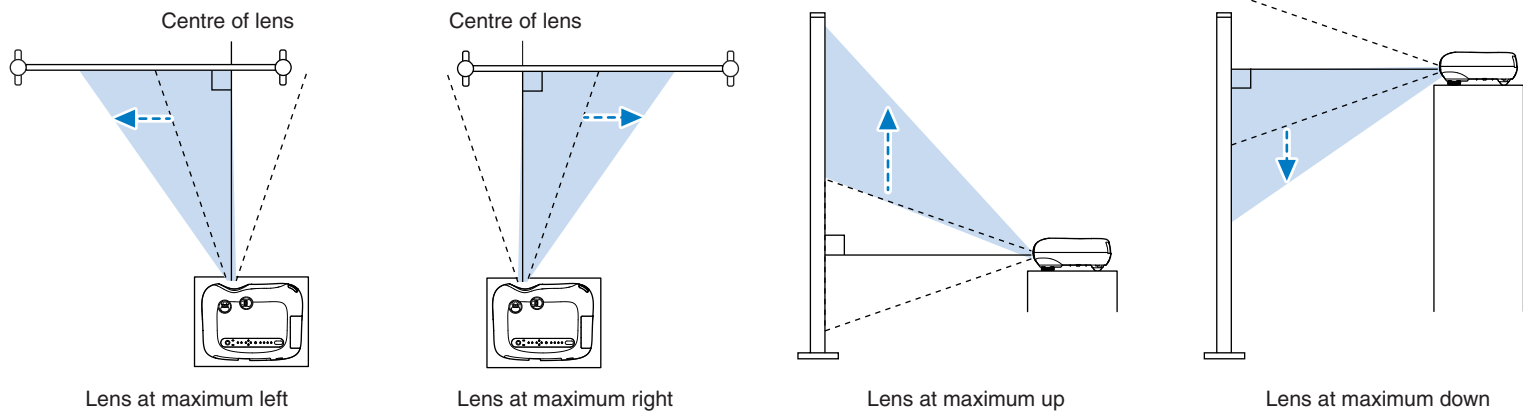
■ Lens shift adjustment

The lens shift adjustment can be used to position the image without distorting it and is especially useful when using the projector in the following locations.

- Hanging from a ceiling
- A screen in a high location
- Projector situated to the side so that the screen can be viewed sitting right in front of it
- Projector situated on a shelf, etc.

5 Adjusting the projection screen - Projection image position adjustment (Lens shift)

* The dotted lines indicate the projection range from the lens centre position.

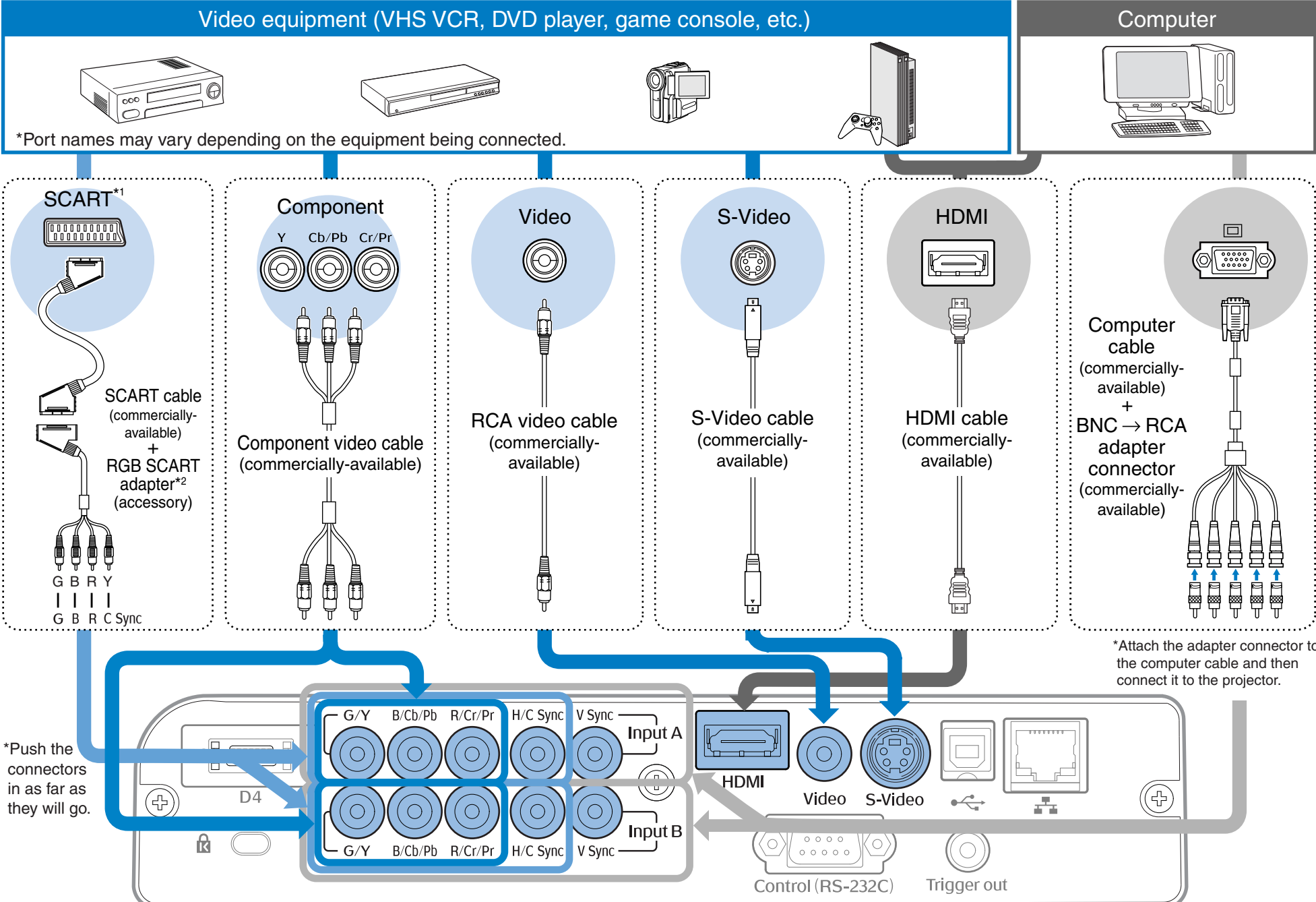


2 ▶ Connecting image sources

- Turn the power off for both the projector and the signal source before connecting them. If the power for either device is on at the time of connection, damage may result.
- Check the shapes of the cable connectors and the device ports before making the connections. If you try to force a connector to fit a device port with a different shape or number of terminals, a malfunction or damage to the connector or port may result.



Some signal sources may have specially-shaped ports. In such cases, use the accessory or optional cables that are supplied with the signal source to make the connections.



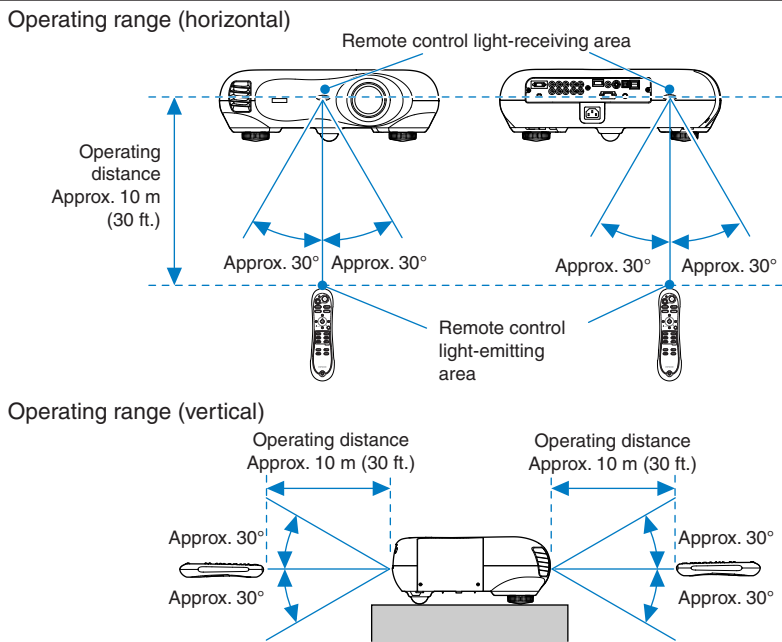
*1 If a DVD has been connected using an RGB SCART adapter, change the "InputA" or "InputB" setting to "RGB-Video".
*2 Some regions may not have the RGB SCART adapter included as an accessory.

3 ▶ Remote control preparation

■ Inserting batteries into the remote control

The remote control is not supplied with batteries already inserted. Insert the accessory batteries before using the remote control.

- 1 Remove the battery cover.
- 2 Insert the batteries. Check the (+) and (-) indications inside the battery compartment and insert the batteries so that they face correctly.
- 3 Install the battery cover.
1 Insert the tab.
2 Press down until the battery cover clicks into place.



■ Battery replacement period

If delays in the responsiveness of the remote control occur or if it does not operate after it has been used for some time, it probably means that the batteries are becoming flat. If this happens, replace the batteries with two new batteries. Use two new AA alkaline batteries as replacement batteries.

4 ▶ Turning the power on and projecting images

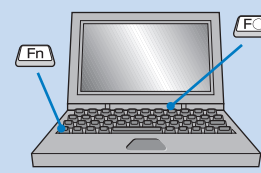
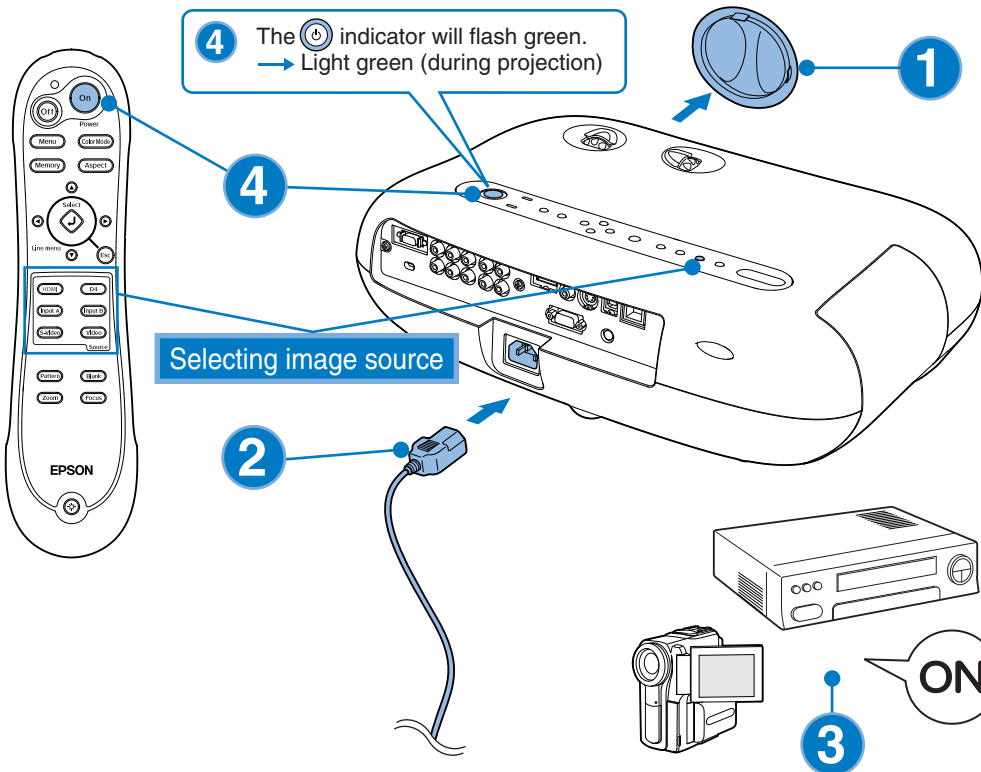
- 1 If the lens cover has been installed, remove it.
- 2 Use the accessory power cable to connect the projector to an electrical outlet.
- 3 Turn the power on for the signal source (for a video source, press the [Play] button to start playback).
- 4 Turn the power on for the projector.
After a short period, the lamp will turn on and projection will start.
The area around the control panel buttons and characters light when the projector's power is turned on. This allows you to operate the projector in a dark room.



- This projector has a "Lock Setting" function for preventing mis-operations.
- To turn off the light around the control panel buttons and characters, set "Button Illumination" to "OFF".
☞ User's Guide: "Configuration Menu Functions"



- This projector is provided with an Auto Setup function that automatically adjusts images to the optimum quality when the input signal from the connected computer is switched.
- If a laptop computer or a computer with a LCD screen has been connected to the projector, you may need to use keyboard or function settings to change the output destination. While holding down the **[Fn]** key, press **[F4]** (the key with a symbol such as on it). After the selection is made, projection will soon start.
☞ Computer documentation



Example of output selection	
NEC	[Fn] + [F5]
Panasonic	[Fn] + [F5]
Toshiba	[Fn] + [F5]
IBM	[Fn] + [F5]
SONY	[Fn] + [F5]
Fujitsu	[Fn] + [F5]
Macintosh	After startup, change the Control Panel adjustment so that mirroring is active.

■ Selecting the image source

If more than one signal source has been connected, or if no images are projected, use the remote control or the projector's control panel buttons to select the signal source.

● Using the remote control

Press the button that has the name of the port on it that the desired signal source is connected to.

If the signal source is connected to the [D4] port or to the [InputA] or [InputB] port, press **[D4]**, **[Input A]** or **[Input B]** to switch the video signals to match the signals from the video equipment.

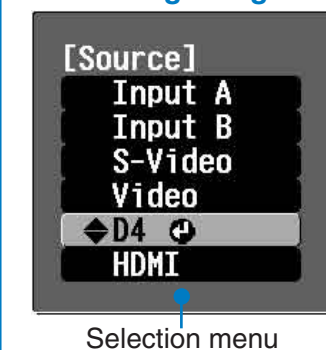
Component video : **[D4]** **D4 (Auto)** (Default setting)
[Input A], **[Input B]** **Component: Auto** (Default setting)
If the colours appear unnatural, set to **Component: YCbCr**
or **Component: YPbPr**
RGB-Video

RGB Video :

The setting changes as follows each time you press **[D4]**.
D4 (Auto) → D4 (YCbCr) → D4 (YPbPr)

The source changes as follows each time **[Input A]** or **[Input B]** is pressed.
Component :Auto → Component :YCbCr → RGB → RGB-Video → Component :YPbPr

● Selecting using the projector's control panel



When you press **[Source]**, the selection menu is displayed.

Use **[Left]** and **[Right]** to select the signal source.
Press **[Enter]** to accept.

If "D4", "Input A" or "Input B" is selected, a menu for selecting the signal format is displayed.
Select the one that matches the image signal of the connected equipment.

? Signal source cannot be selected / Images are not projected correctly

If there is a problem with projection even though the projector is set up and connected correctly, check the following points.
If the following points fail to solve the problem, refer to ☞ "When the Indicators Provide No Help" in the User's Guide.



A connected signal source cannot be selected.

Do the input signal settings match the projector settings?

If connected to the [InputA] or [InputB] port

Are images being played back by the signal source?

Has the VCR been connected using an RGB SCART adapter?

Has the DVD been connected using an RGB SCART adapter?

Press **[Input A]**, **[Input B]** or **[Source]** in accordance with the video input source and select the format that matches the signals from that equipment.

Press the [Play] button to start playback on the video equipment.

Press **[Video]** to switch the image source to Video.

Change the setting at the DVD to RGB output.



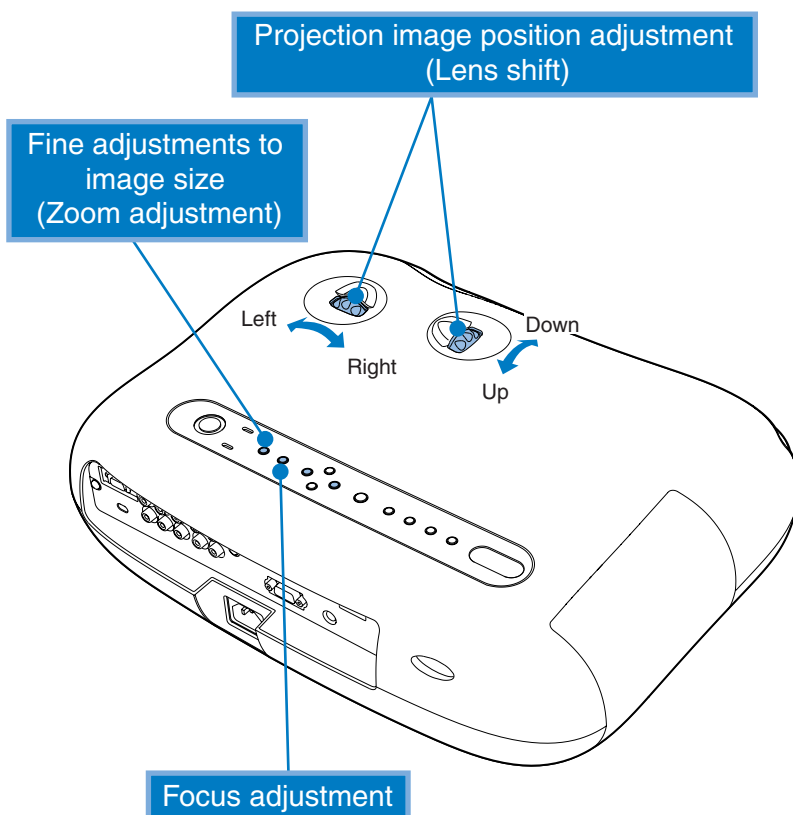
Images appear greenish or purplish

Do the input signal settings match the projector settings?

If connected to the [InputA] or [InputB] port

Press **[Input A]**, **[Input B]** or **[Source]** in accordance with the video input source and select the format that matches the signals from that equipment.

5 ▶ Adjusting the projection screen



Zoom adjustment and focus adjustment are performed after the lamp lights.
If you push **[Left]** or **[Right]** once it adjusts one step, and holding it down adjusts it continuously.

Focus adjustment

If you press **[Focus]**, the adjustment icon will appear on the image.
Press **[Left]** and **[Right]** to adjust the focus.
Press **[Focus]** once more to complete the adjustment.
Adjustment can also be carried out while the test pattern is displayed.

Projection image position adjustment (Lens shift)

Use the two lens shift dials to adjust the image position.
When the lens shift dial is turned, a point of resistance will be felt.
This indicates the approximate centre point for the range of adjustment. In addition, if the lens shift dial becomes hard to turn further and the image position stops changing, no further adjustment is possible.
☞ "Setting up" - Lens shift adjustment

Fine adjustments to image size (Zoom adjustment)

If you press **[Zoom]**, the adjustment icon will appear on the image.
Press **[Left]** and **[Right]** to adjust the zoom.
Press **[Zoom]** once more to complete the adjustment.
Adjustment can also be carried out while the test pattern is displayed.



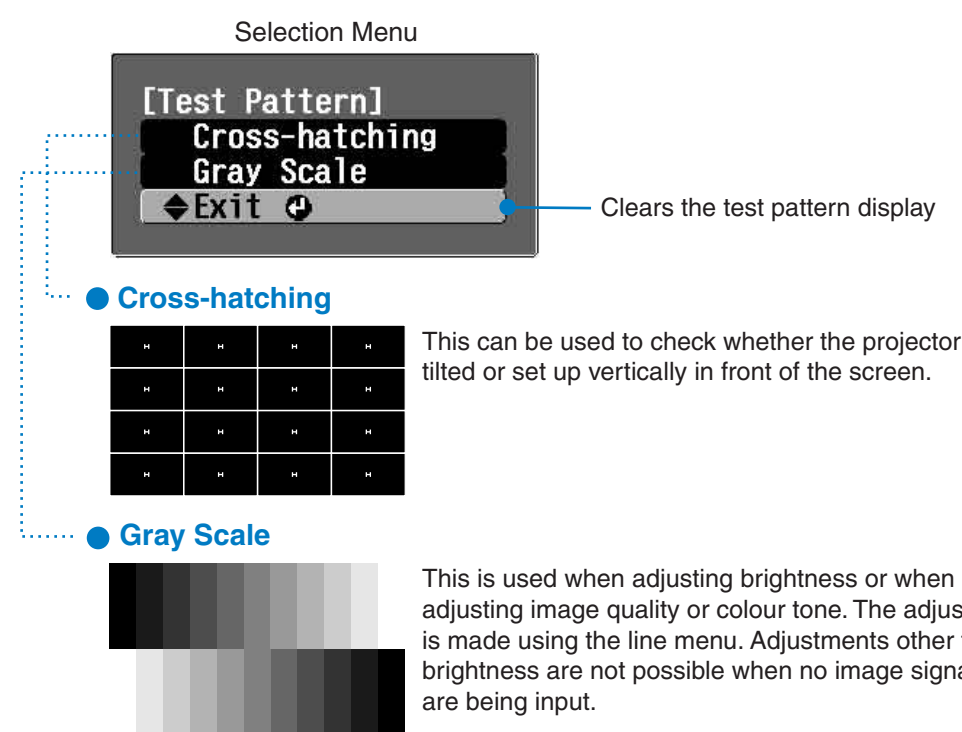
When **[Zoom]** or **[Focus]** is pressed, a will be displayed on the screen and if adjustment is not possible, it means that "Zoom Lock" or "Focus Lock" is operating. Turn the lock function off if you would like to make adjustments.

☞ User's Guide: "Configuration Menu Functions"

■ Displaying a test pattern

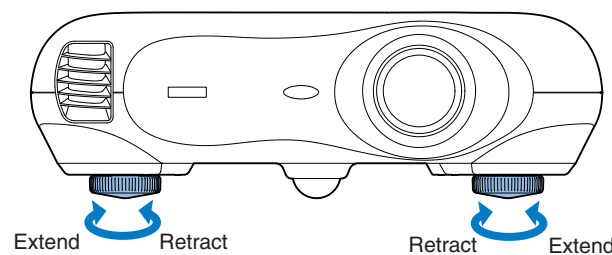
You can project a test pattern at times such as when setting up the projector in order to correct keystone correction and to make line menu adjustments.

If **[Pattern]** on the remote control is pressed, the pattern selection menu appears.



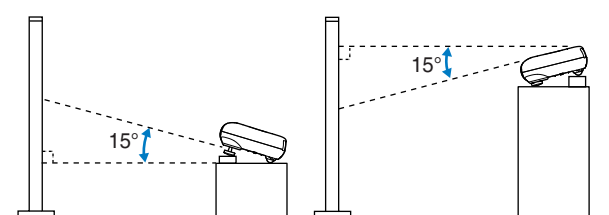
■ Correcting projector tilt

If the projected images are tilted horizontally, use the front adjustable feet to adjust the projector so that it is horizontal.



■ Correcting keystone distortion (Keystone)

When you wish to adjust the projection above or below the range of lens shift adjustment set the projector at an angle.
When the projector is angled, the projected image may distort into a trapezoid. In such cases, press **[Keystone]** () on the projector's control panel to adjust the images.
However, the image quality will decrease compared to if the lens shift function is used.
When the lens is shifted to the left or right, complete keystone correction is not possible. When making keystone corrections set the lens at the centre left to right.



Keystone distortion can be corrected within a maximum vertical angle of approximately 15°.

6 ▶ Turning the power off

- 1 Turn the power off for the signal sources that are connected to the projector.

- 2 Press **[Power Off]** on the remote control or **[Power Off]** on the projector.

If you press **[Power Off]**, the message shown right will be displayed, so press **[Power Off]** again.

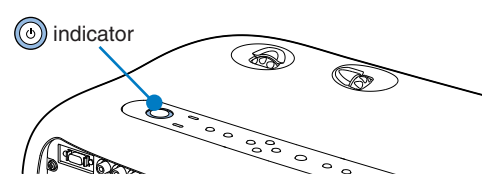
The indicator will flash orange and the cool-down period will start.
You cannot use the remote control or the projector's control panel during cool-down (takes approximately 30 seconds).
After cool-down is complete, the indicator changes to steady orange and the projector goes to standby mode.



If the projector is on a surface such as a tabletop, the surface of the table near the air exhaust vent will become hot.



If the message "The projector is overheating. Make sure nothing is blocking the air vent, and clean or replace the air filter." is displayed, press **[Fan]** or **[Power Off]** to turn the power off, and then do as instructed in the message.



- 3 Attach the lens cover.

Attach the lens cover when not using the projector in order to keep the lens free from dust and other foreign objects.

- 4 When the projector will not be used for long time, disconnect the power cable from the electrical outlet.

Always make sure that the projector is in the standby condition before disconnecting the plug. After the power plug is disconnected, the indicator will continue to light for a brief period and then it will turn off.

- 5 Disconnect the cables that are connecting other equipment to the projector.