

Epson SureColor F3000 DTG

- Designed for low-cost high-volume direct to garment (DTG) production
- Staggered dual 2.6" print heads enable high-speed single-pass 5C printing
- Bulk ink system for increased efficiency and a reduced running cost
- Fast loading with an upgraded platen and auto platen height adjustment
- Industrial grade mechanism with high durability and advanced self cleaning
- Epson UltraChrome® DG ink for crisp and bright images with a low tack finish, high stretchability and good wash/UV durability
- Ethylene glycol free for a safer work environment with Oeko-Tex™ & GOTS certification for garment safety across all age groups including infants
- Supplied with Epson Garment Creator and Accounting S/w along with Epson Cloud Solution T for enhanced management, service and support
- Comprehensive and flexible service with cover extendable up to FIVE years complete with optional User Self replacement of selected components including print heads

Epson SureColor Fabric Range SC-F3000 Production DTG System

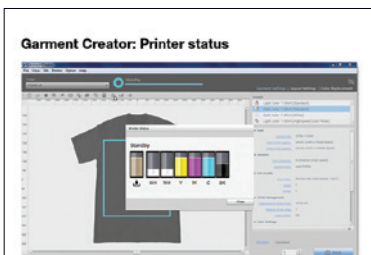
Product Specifications

| PRINTING TECHNOLOGY | |
|--------------------------------------|--|
| Print Head | Dual Epson 2.6" MicroTFP PrecisionCore™ |
| Configuration | Dual 10 lines white and 8 lines colour, 400 noz/line |
| Maximum Resolution | 1200 x 1200 dpi |
| Features | Staggered head array, Linear Motion Guide carriage, auto height adjustment, ink-less nozzle status monitoring, heavy duty dust catcher, auto head & cap clean, opt. head User Self Replacement |
| INK SYSTEM | |
| Ink Type | Epson UltraChrome® DG |
| Supply System | Bulk supply with user replaceable 1.5 L bags |
| Configuration | CYMK + 2 x Wh + Maint Liquid |
| PERFORMANCE ¹ | |
| Light Shirts (no white) | 21 s Production |
| Dark Shirts (with white) | 40 s Production |
| MEDIA SUPPORT | |
| Compatible Fabrics | Cotton, polyester and mixed fibre garments ² |
| Max Thickness / Weight | 29.5 mm / 1.5 kg per garment |
| Max Print Area | Large Platen: 406 x 508 mm Medium and Grooved Platens: 335 x 406 mm |
| OPERATION | |
| Control Panel | 4.3" colour touch screen |
| Utility Software | Epson SetUp Navi, Accounting Tool, Edge Dashboard, Comms Driver, Control Dashboard, EpsonNet Config/ Set-up/Print, F/W updater & Cloud Solution PORT |
| Application Software | Epson Garment Creator (Win/Mac 64-Bit) |
| Interface | High Speed USB2.0 & 10/100/1000 Base-T Ethernet |
| Memory | 4 GB |
| Power Consumption | 168 W operating/ 20 W sleep |
| Operational Space | 3.0 x 1.7 x 2.6 m (WxHxD) |
| ENVIRONMENTAL | |
| Operational Temp | 10~35°C (15~25°C recommended) |
| Operational Humidity | 20~ 80% (no condensation, 40~60% recommended) |
| Power Supply | 240 V, 4.6 A, 50 Hz - 60 Hz |
| PHYSICAL | |
| Printer | 1.7 x 1.3 x 1.8 m (WxHxD), 330 kg (no ink) |
| Printer Shipping Carton ³ | 2.3 x 1.6 x 1.8 m (WxHxD), 480 kg |

| CONFIGURATION OPTIONS | |
|--------------------------------|---|
| SCF30001Y | Printer with 1Yr CoverPlus on-site service ⁴ |
| SCF30003Y | Printer with 3Yr CoverPlus on-site service ⁴ |
| SCF30005Y | Printer with 5Yr CoverPlus on-site service ⁴ |
| OPTIONS & ACCESSORIES | |
| C12C936241 | Large Hanger Platen |
| C12C933961 | Grooved Platen (for shirts with buttons or a zipper) |
| C12C936261 | Medium Hanger Platen |
| C12C936281 | Small Hanger Platen |
| C12C933951 | Extra Small Platen |
| C12C933971 | Sleeve Platen |
| 1YWSCF3000 | 1Yr CoverPlus ⁴ |
| 2YWSCF3000 | 2 Yr CoverPlus ⁴ |
| CONSUMABLES | |
| C13T736100 | 20 L Pre-Treatment Liquid (concentrate) |
| C13T43R200 | 18 L Polyester Pre-Treatment Liquid |
| C13T47W100~400, A00, B00 | 1.5 L ink bags (K/C/M/Y, Wh, Maint Liquid) |
| C13T736200 | Maintenance Kit |
| C13S210105 | Head Cleaning Set |
| C13S210107 | Flushing Pad Set |
| C13S210111 | Replacement Air Filter Set |
| C13S210109 | Replacement Anti-Drying Cap |
| C13S210071 | Replacement re-usable Waste Tank |
| C13S210118 | Large Hanger Platen Grip Pad |
| C13S210119 | Medium Hanger Platen Grip Pad |
| C13S210120 | Small Hanger Platen Grip Pad |
| WHAT'S IN THE BOX ³ | |

Printer, ink supply system, stand, power cords, 1 x set ink/maint liquid bags, Cotton Pre-Treat, Medium Hanger Platen and 1 x Grip Pad, waste tank, maintenance kit, utility software and user manual (on CD), Garment Creator and Accounting Tool s/w (web download), Cloud Solution PORT (web utility).

- Figures are print speeds only for an A4 portrait image; actual production times will depend on a range of factors including garment type and preparation, heat press operation, computing & network systems, image size and print mode.
- Optimised for garments with a moderate to loose weave and 50% or more cotton content. With appropriate pre-treatment a wide range of single and mixed fibre garments can be supported however print adhesion and wash durability will vary. Customers working with fabrics that have a tight weave and/or cotton content less than 50% are recommended to test prior to purchase and/or production.
- Ink and Pre-treat are shipped separately to the printer. The DTG process requires the use of a heat press; please consult your dealer about suitable models. For high speed production a pre-treatment machine would also be recommended.
- The printer is supplied with a 30 day warranty which covers the print mechanism (including print heads) and ink supply system. The warranty is augmented with a selectable period of CoverPlus. Free on-site repair is provided in Australian metro locations (AU regional & NZ locations will attract an additional travelling charge). Service is conditional on a range of factors including appropriate product usage, operation within print life limits, regular & appropriate user maintenance, use of correct and Genuine Epson consumables, agreement and registration under Epson Cloud Solution PORT. Optional User Self Replacement of print heads is supported via Epson Cloud Solution PORT subject to operators having appropriate skills and undertaking training.



Supplied with enhanced Epson Garment Creator software for Macintosh® and Windows®



Epson Cloud Solution PORT provides upgraded management reporting, enhanced support & service with optional User Head Replacement



Better Products for a Better Future



Epson is the registered trademark of Seiko Epson Corporation. All other names and company names used herein are for identification purpose only and may be the trademarks or registered trademarks of their respective with Epson disclaiming any and all rights. All print samples shown herein are simulations. **IMPORTANT: This document contains simplified specifications with content subject to change; for full and latest information please see the relevant Epson web site.** V2.2 July 2021

EPSON AUSTRALIA
ABN 91 002 625 783
Level 1, 3 Talavera Road
Macquarie Park NSW 2113
Tel: (02) 8899 3666
www.epson.com.au

EPSON NEW ZEALAND
ABN 91 002 625 783
Level 2, 7-9 Fanshawe Street
Auckland, 2010
Tel: (09) 366 6855
www.epson.co.nz