



Epson® SureColor™ SC-S40600

- Produce durable outdoor signs & banners, window & back-lit displays, wallpaper & decor, vehicle wraps & POS, labels & more...
- Compatible with coated & uncoated paper, vinyl, canvas, film & synthetic stocks
- Superior imaging with reduced grain, an enhanced gamut, maximum contrast & gloss levels
- Supports tiling applications with exceptional colour precision, consistency & linearity
- Low running costs with reduced power consumption, ink consumption & maintenance
- Easy to operate with a see-through platen cover, remote management & status notification
- Fast job completion with an integrated Auto Take-Up, Auto Media Setup & Skew Correction
- Enhanced reliability with a Self Cleaning Printhead, Headguard, & Air Filtration system
- Suits installation in factory, shop & air-conditioned studio environments
- Cost effective operation with low maintenance, power & ink consumption
- High durability with flexible cover extendable up to FIVE YEARS

Epson® SureColor™ SC-S40600

Product Specifications

PRINTING TECHNOLOGY	
Print Engine	Self-cleaning Epson PrecisionCore™ TFP with VSDT Epson Precision Dot Technology Integrated Headguard
Media Handling	Auto Media Setting, Auto Skew Correction, Advanced Auto Tension Control (Ad-ATC) & Auto TakeUp (ATU) Optional Print Drying System
Print Quality	1440 x 1440 dpi Max Res, 4.2pl Min Drop Size
INK SYSTEM	
Type	Epson UltraChrome® GS3 Eco-Solvent
Colour Set	CMYK
Loading	4 x 700ml Cartridge
PRINT SPEEDS ¹	
Draft	58.4m ² /h
Billboard	29.4m ² /h
Banner	16.6m ² /h
Vinyl, Canvas & Paper	10.5m ² /h
Film (Front & Backlit)	3.5m ² /h
MEDIA HANDLING	
Sizing	300-1626mm (64") wide, 1mm max thickness
Input	Single Roll, 45kg max weight, 250mm max diameter
Output	Sheet (manual cut) or roll (200mm max diameter)
Drying	Individually adjustable input, platen & output heaters
MANAGEMENT	
Features	See-through platen with LED lighting On-board 2.7" Colour LCD Panel Supplied with Epson Control Dashboard software Remote E-mail Status & Error Reporting Supports most major 3rd party RIP Applications

INTEGRATION	
Space Requirements	3.6 x 2.7 x 1.7m (WxDxH)
Operational Temp	15 to 35°C (20 to 32°C recommended)
Operational Humidity	20 to 80% (40 to 60% recommended)
Power Requirement	2x 240V, 50/60Hz, 5A
Power Consumption	480W Operating/ 12 W Sleep
Operational Noise	59dB
Connectivity	USB2.0, 100BASE-TX/1000BASE-T
OPTIONS	
C12C932381	Optional Print Drying System
1YWSCS40600	1Yr CoverPlus On-Site Service Extension
2YWSCS40600	2Yr CoverPlus On-Site Service Extension
CONSUMABLES	
C13T724100	Maintenance Cleaning Kit
C135210044	Maintenance Parts Kit
C13T699300	Ink Cleaner
C13T833192	700ml Black Ink Cartridge
C13T833292	700ml Cyan Ink Cartridge
C13T833392	700ml Magenta Ink Cartridge
C13T833492	700ml Yellow Ink Cartridge
C13T833092	Cleaning Cartridge
C13T835192~492	700ml Colour 3M™ MCS™ Ink Cartridges ²
CONFIGURATION OPTIONS	
SCS406001YR	Printer with 1Yr On-Site Warranty
SCS406003YR	Printer with 1Yr Wty & 2Yr On-Site CoverPlus
SCS406005YR	Printer with 1Yr Wty & 2 x 2Yr On-Site CoverPlus

¹ Figures are maximum engine speeds only. They do not include provisions for image processing, transfer, drying or post production. Nominated speeds may not be suitable for all media types &/ or applications. Alternate print modes may be employed by RIP s/w for different results.

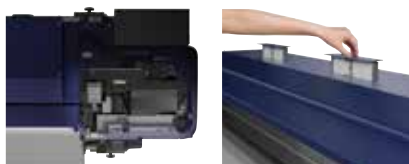
² For details on the MCS program including coverage, certification, terms & conditions please contact your local 3M office.



An optional Print Drying System integrates with the printer to enable production at high speed & with heavy ink loads



The Ad-ATC & ATU enable roll-to-roll production with superior linearity, parallelism, & tension for off-line processing & tiling applications



The auto head cleaning & air filtration systems work in conjunction with the headguard to ensure superior reliability with reduced maintenance



The printer can be managed through the Control panel or via Epson Control Dashboard s/w complete with e-mail status & error notifications

Better Products for a Better Future

Epson, SureColor, UltraChrome, PrecisionCore are registered trademarks of Seiko Epson Corporation. All other names and logos herein are for identification purpose only and are trademarks of their respective owners; Epson disclaims any and all rights. All print samples shown herein are simulations. Specifications are subject to change without notice; customers should review material posted on the web sites listed below for the latest information.

July 2018

