

Epson® SureColor™ SC-S60600

- Produce durable outdoor signs and banners, window and back-lit displays, wallpaper and decor, vehicle wraps and POS, labels and more... AT HIGH SPEED
- Compatible with coated and uncoated paper, vinyl, canvas, film and synthetic stocks
- Superior imaging with reduced grain, an enhanced gamut, maximum contrast and gloss levels
- Supports tiling applications with exceptional colour precision, consistency and linearity
- Low running costs with reduced power consumption, ink consumption and maintenance
- Easy to operate with a see-through platen cover, remote management & status notification
- Fast job completion with an integrated Auto Take-Up, Auto Media Setup and Skew Correction
- Enhanced reliability with a Self Cleaning Printhead, Headguard, and Air Filtration system
- Suits installation in factory, shop and air-conditioned studio environments
- Cost effective operation with low maintenance, power and ink consumption
- High durability with flexible cover extendable up to FIVE YEARS

Epson® SureColor™ SC-S60600

Product Specifications

PRINTING TECHNOLOGY	
Print Engine	Self-cleaning DUAL PrecisionCore™ TFP with VSDT Epson Precision Dot Technology Integrated Headguard
Media Handling	Auto Media Setting, Auto Skew Correction, Advanced Auto Tension Control (Ad-ATC) & Auto TakeUp (ATU) Air Filtration System & Print Drying System
Other	
Print Quality	1440 x 1440 dpi Max Res, 4.2pl Min Drop Size
INK SYSTEM	
Type	Epson UltraChrome® GS3 Eco-Solvent
Colour Set	DUAL CMYK
Loading	8 x 700ml Cartridge
PRINT SPEEDS ¹	
Draft	95.3m ² /h
Billboard Production	52.3m ² /h
Banner Production	29.4m ² /h
Vinyl Production	17.6m ² /h
Film Production	6.8m ² /h
MEDIA HANDLING	
Sizing	300-1626mm (64") wide, 1mm max thickness
Input	Single Roll, 45kg max weight, 250mm max diameter
Output	Sheet (manual cut) or roll (200mm max diameter)
Drying	Individually adjustable input, platen & output heaters
MANAGEMENT	
Features	See-through platen with LED lighting On-board 2.7" Colour LCD Panel Supplied with Epson Control Dashboard software Remote E-mail Status & Error Reporting Supports most major 3rd party RIP Applications

INTEGRATION	
Space Requirements	3.6 x 2.7 x 1.7m (WxDxH)
Operational Temp	15 to 35°C (20 to 32°C recommended)
Operational Humidity	20 to 80% (40 to 60% recommended)
Power Requirement	3x 240V, 50/60Hz, 5A
Power Consumption	745W Operating/ 13W Sleep
Operational Noise	60.5dB
Connectivity	USB2.0, 100BASE-TX/1000BASE-T
OPTIONS	
1YWSCS60600	1Yr CoverPlus On-Site Service Extension
2YWSCS60600	2Yr CoverPlus On-Site Service Extension
CONSUMABLES	
C13T724100	Maintenance Cleaning Kit
C135210044	Maintenance Parts Kit
C13T699300	Ink Cleaner
C13T833192	700ml Black Ink Cartridge
C13T833292	700ml Cyan Ink Cartridge
C13T833392	700ml Magenta Ink Cartridge
C13T833492	700ml Yellow Ink Cartridge
C13T833092	Cleaning Cartridge
CONFIGURATION OPTIONS	
SCS606001YR	Printer with 1Yr On-Site Warranty
SCS606003YR	Printer with 1Yr Wty & 2Yr On-Site CoverPlus
SCS606005YR	Printer with 1Yr Wty & 2 x 2Yr On-Site CoverPlus

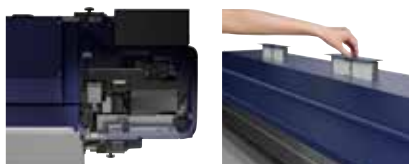
¹ Figures are maximum engine speeds only. They do not include provisions for image processing, transfer, drying or post production. Nominated speeds may not be suitable for all media types and/or applications. Alternate print modes may be employed by RIP s/w for different results.



The included Print Drying System integrates with the printer to enable production at high speed and with heavy ink loads



The Ad-ATC and ATU enable roll-to-roll production with superior linearity, parallelism, and tension for off-line processing and tiling applications



The Auto Head Cleaning & Air Filtration systems work in conjunction with the Headguard to ensure superior reliability with reduced maintenance



The printer can be managed through the Control panel or via Epson Control Dashboard s/w complete with e-mail status & error notifications



Better Products for a Better Future

Epson is the registered trademark of Seiko Epson Corporation. All other names and company names used herein are for identification purpose only and may be the trademarks or registered trademarks of their respective owners. Epson disclaims any and all rights in those marks. All print samples shown herein are simulations. Specifications are subject to change without notice. All content is copyright Epson Australia V1.0 Jan-2016