

EPSON®
EXCEED YOUR VISION



All-in-One

Print | Copy | Scan | Photo

Epson Stylus®
TX110

Individual Ink Cartridges

- Epson DURABrite® Ultra Inks
 - Long-lasting prints with smudge, fade and water-resistant qualities
- Individual ink cartridges
 - Only replace the colour you use

All-in-One

Print | Copy | Scan

Epson Stylus® TX110

Economical and Long-lasting Prints

Enjoy high quality photo prints
at affordable prices with the
versatile Epson Stylus® TX110.

Assured Quality with Epson DURABrite® Ultra Ink

Epson DURABrite® Ultra Ink is the ideal all-purpose ink for everyday printing. With this revolutionary smudge-resistant ink that is also resistant to water and fading, prints can stay vibrant for many years to come.



Without
Epson DURABrite® Ultra Ink



With
Epson DURABrite® Ultra Ink

Long-lasting prints with Epson DURABrite Ultra Inks

Epson DURABrite Ultra Ink is renowned for its smudge, fade and water-resistant qualities, but you can also be assured of sharp black text and glossy photos to meet both your general and photo printing needs.



Superior Print speeds for Busy Schedules

Maximise time, efficiency and productivity with the Epson Stylus® TX110 which provides excellent print speeds of up to 30 pages per minute and a copy speed of 3 seconds per page.

High Resolution for Best Print Quality

With a high resolution of 5760 dpi, you are always assured of high quality printouts. The Epson Stylus® TX110 is also capable of producing quality borderless photo prints, making it a convenient tool for your creative photo projects.



Easy One-touch Copying

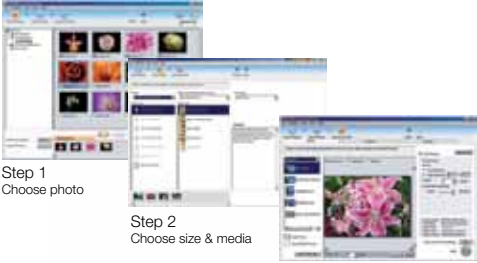
The Epson Stylus® TX110 is equipped with a convenient one-touch photocopying function. Hassle-free copying no matter what you need!

Photo Perfection with Epson Creativity Suite

The Epson Stylus® TX1110 comes with powerful and easy to use photo and document management software including:

Epson Easy Photo Print

Achieve photo lab quality prints in just 3 steps.



Step 1
Choose photo

Step 2
Choose size & media

Step 3
Print



Dust Removal Tool

Allows you to achieve flawless prints in just one click.

Epson PhotoEnhance

Gives you beautiful and natural prints with automatic adjustments of skin tones, colour casts and exposure levels.



Red Eye Correction

Correct photos with red eye effects with a click of a button.



Partners in Perfection



Epson specialty media is designed to complement genuine Epson inks to produce exceptionally high quality prints.



Epson inks are designed specifically to work with your Epson printer to deliver stable, long-lasting prints.

Epson Stylus®
TX110

*To use USB port, your PC must conform to PC98 specifications, and have Windows preinstalled. Consult the documentation provided with your PC for further information about USB connectivity. Note also that printing errors may occur if non-standard cables or more than 2 USB hub connectors are used.



² Based on ISO/IEC 24711 and 24712 Test Suite

* Print speed (PPM) when printed on A4 plain paper in the fastest mode. 10x15cm photo print speed when printed on Epson Premium Glossy Photo Paper in default mode. Print speed may vary depending on system configuration, print mode, document complexity, software, type of paper used and connectivity. Print speed does not include processing time on host computer.



** Copy speed (CPM) when printed on plain paper in the fastest mode. Copy speed may vary depending on copy mode, document complexity, type of paper used and number of copies.

EPSON is the registered trademark of SEIKO EPSON CORPORATION.

All other product names and other company names used herein are for identification purpose only and may be the trademarks or registered trademarks of their respective owners. EPSON disclaims any and all rights in those marks. Scan/Print samples shown herewith are simulations. Specifications are subject to change without notice.

EPSON®
EXCEED YOUR VISION

www.epson.com.au

www.epson.co.nz

Visit www.epson.com.au or www.epson.co.nz for more details.

SPECIFICATIONS

PRINTER TYPE

PRINTING METHOD On-demand ink jet (piezoelectric)

PRINT QUALITY

MAXIMUM RESOLUTION 5760 dpi with Variable-Sized Droplet Technology
MINIMUM INK DROPLET VOLUME 4 pl

PRINT SPEED*

BLACK TEXT MEMO (A4) Approx. 30 ppm
COLOUR TEXT MEMO (A4) Approx. 15 ppm
PHOTO 4x6² (10x15cm) (Borderless) Approx. 89 sec per photo

COPY SPEED**

BLACK TEXT MEMO (A4) Approx. 3 sec
COLOUR TEXT MEMO (A4) Approx. 12 sec

SCAN TECHNOLOGY

SCANNER TYPE A4 Flatbed colour image scanner
SENSOR TYPE CIS
OPTICAL RESOLUTION 600 x 1200 dpi, 48 bits input, 24 bits output
DOCUMENT SIZE Up to A4

SCANNING SPEED

MONOCHROME	A4 300 dpi	Approx. 4 mSec/Line
COLOUR	A4 300 dpi	Approx. 5 mSec/Line
MONOCHROME	A4 600 dpi	Approx. 12 mSec/Line
COLOUR	A4 600 dpi	Approx. 15 mSec/Line

73N INK SERIES (STANDARD INKS)

BLACK INK CARTRIDGE 255[^]
CYAN INK CARTRIDGE
MAGENTA INK CARTRIDGE 395[^] (Composite Yield)
YELLOW INK CARTRIDGE

91N INK SERIES (ECONOMY INKS)

BLACK INK CARTRIDGE 180[^]
CYAN INK CARTRIDGE
MAGENTA INK CARTRIDGE 215[^] (Composite Yield)
YELLOW INK CARTRIDGE

[^]Based on ISO/IEC 24711 & 24712 Test Suite

INTERFACE

USB - Compatible with the USB 2.0 Specification

PAPER HANDLING

PAPER HOLD CAPACITY Input capacity: 100 sheets, A4 Plain paper (64 g/m²)
PAPER SIZE A4, Letter, Legal, 8x10", 5x7", 4x6", 3.5x5", 5x8", A6, A5, B5, Half Letter, Envelopes: No10, DL, C6
MEDIUM TYPES RECOMMENDED Premium Glossy Photo Paper A4, 4x6" and 5x7", Matte Paper – Heavyweight

NOISE LEVEL

5.7 B, 43 dB(A) according to ISO7779 pattern with PGPP/ Photo RPM mode (per ISO/IEC24712 pattern)

ELECTRICAL SPECIFICATIONS

Rated Voltage AC 220-240 V
Rated Frequency 50-60 Hz
Power Consumption Approx. 16.1 W Stand alone copying (ISO24712 Letter Pattern)
Approx 2.0 W (Sleep Mode)

PRINTER SOFTWARE ON CD-ROM

PRINTER DRIVERS Windows® 7/ 7x64/ Vista/ Vista64/ XP/ XPx64/ 2000
Mac® OS 10.3.9

SOFTWARE TOOLS

Epson Easy Photo Print
Epson Web-to-Page
Online Guide

LIGHTFASTNESS

LIGHTFASTNESS 120 years on Epson Matte Paper – Heavyweight
Light Source Fluorescent Light
Intensity 70 k lux
Temperature 24°C
Humidity 60 % RH
Glass Mount 2 mm, Soda Lime
Fade Criteria Pure YMC 30 % loss at OD=1
Display Life Calculation Total illumination/ (500 lux x 10 hours x 365 days=1 year)
Tests developed and conducted by Epson under fluorescent light (indoor display conditions) with glass mount.
The data is calculated by Epson's accelerated testing of prints on specialty media.