

**EPSON**<sup>®</sup>  
EXCEED YOUR VISION



**All-in-One**

Print | Copy | Scan | Fax

**Epson Stylus™**  
**Office**  
**TX600FW**

## Laser Speed and Quality All-in-One with Wireless Networking

- Fast speeds  
- Up to 38 pages per minute
- Wireless Network Connectivity  
- Integrated Ethernet/wireless for shared printing
- Epson DURABrite™ Ultra ink  
- Laser quality, water and smudge resistant prints

# All-in-One

Print | Copy | Scan | Fax

## Epson Stylus™ Office TX600FW

## Amazing Speed, Wireless Connectivity & Laser-sharp Quality

Epson Stylus™ Office TX600FW, the ideal integrated office solution with wireless network connectivity

### Enhanced Business Productivity

#### Laser Print Speed

Maximise time efficiency and productivity with the Epson Stylus™ Office TX600FW:

- Maximum print speed of 38 pages per minute



#### Wireless Network Connectivity

Connect multiple workstations for shared, effortless printing. Wireless network connectivity eliminates the need for expensive wiring, enabling versatility and mobility.



#### Easy Fax

Fax is fast and easy with speeds of up to 33.6kbps and convenient speed dial features. The 180 page fax storage memory ensures all your important incoming faxes will be received securely.



Further, Epson's Micro Piezo™ print head technology delivers unrivalled quality prints with VSDT (Variable Sized Droplet Technology) without compromising speed.

### Economical Printing

#### Individual Ink Cartridges

Epson individual ink cartridges allow you to maximise usage, as you only replace the colour you use. In addition, all ink cartridges are available in extra high capacity to cater for high volume business needs, reducing your running costs and inconvenience of changing cartridges frequently.



### Professional Quality

#### Laser-sharp Quality

Epson DURABrite™ Ultra ink delivers laser-sharp quality and brilliantly coloured prints for all your professional needs. Most importantly, prints dry in an instant and are water, smudge and fade resistant. Rest assured that important business documents will last for years to come.



### Energy Efficient Features

The Energy Star compliant Epson Stylus™ Office TX600FW consumes only 20W during printing. Energy efficiency is key to minimising running costs.



## Added Functionality

### 2.5" LCD Screen

Easily view, navigate and customise personal fax settings with the built-in 2.5" LCD viewer.

### 30 sheet ADF

The Auto Document Feeder brings you efficient, multiple-page copying, scanning and faxing.

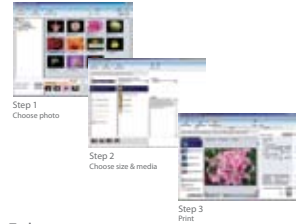
### PC-free Printing

PictBridge connectivity and multi-format card slots, combined with the 2.5" LCD viewer, provide PC-Free viewing and printing of photos.

## Photo Perfection

The Epson Stylus™ Office TX600FW comes with powerful and easy-to-use photo management software including:

- Epson Easy Photo Print  
Achieve photo lab quality prints in just 3 steps with this easy-to-use software.



- Epson PhotoEnhance  
Gives you beautiful and natural prints with automatic adjustments of skin tones, colour casts and exposure levels, adding a professional touch to photos.



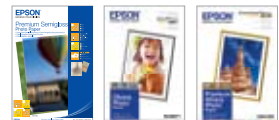
## Partners in Perfection



An efficient and key partner to your office document digitisation needs, Epson's range of business scanners brings you awesome image quality and accurate colour reproduction. Simply scan to archive or to share.



Epson inks are designed specifically to work with your Epson printer to deliver stable, long-lasting prints.



Epson specialty paper media is designed to complement Epson genuine inks to produce exceptionally high quality prints.

# Epson Stylus™ Office TX600FW

Weight: 7.2kg



To use USB port, your PC must conform to PC98 specifications, and have Windows preinstalled. Consult the documentation provided with your PC for further information about USB connectivity. Note also that printing errors may occur if non-standard cables or more than 2 USB hub connections are used.



\* Print speed (PPM) when printed on A4 plain paper in the fastest mode, 10x15cm photo print speed when printed on Epson Premium Glossy Photo Paper in default mode. Print speed may vary depending on system configuration, print mode, document complexity, software, type of paper used and connectivity. Print speed does not include processing time on host computer.

\*\* Copy speed (CPM) when printed on plain paper in the fastest mode. Copy speed may vary depending on copy mode, document complexity, type of paper used and number of copies.



Black text      Black text and graphics      Photo 4R (4"x6")

Epson is the registered trademark of Seiko Epson Corporation. All other product names and other company names used herein are for identification purpose only and may be the trademarks or registered trademarks of their respective owners. Epson disclaims any and all rights in those marks. Scan/Print samples shown herewith are simulations. Specifications are subject to change without notice.

## SPECIFICATIONS

PRINTER TYPE	On-demand ink jet (piezoelectric)		
PRINTING METHOD	384 nozzles Black, 128 nozzles, each colour (Cyan, Magenta, Yellow)		
NOZZLE CONFIGURATION	Bi-directional printing, Uni-directional printing		
PRINT DIRECTION	Bi-directional printing, Uni-directional printing		
PRINT QUALITY			
MAXIMUM RESOLUTION	5760x1440 dpi (with Variable-Sized Droplet Technology)		
MINIMUM INK DROPLET VOLUME	2pl		
PRINT SPEED*			
BLACK TEXT MEMO (A4)	Approx. 38 ppm (Draft)		
COLOUR TEXT MEMO (A4)	Approx. 38 ppm (Draft)		
PHOTO 10x15cm/4x6in	Approx. 14 sec per photo (Draft W/Border)		
	Approx. 20 sec per photo (Draft Borderless)		
	Approx. 72 sec per photo (Default Borderless)		
103 INK SERIES (EXTRA HIGH CAPACITY)			
BLACK INK CARTRIDGE	915 pages <sup>1</sup>		
Recommended:			
103 INK SERIES (EXTRA HIGH CAPACITY)			
BLACK INK CARTRIDGE	995 Pages <sup>1</sup>		
CYAN INK CARTRIDGE	815 Pages <sup>1</sup> (Composite Yield)		
MAGENTA INK CARTRIDGE			
YELLOW INK CARTRIDGE			
	<sup>1</sup> Based on ISO/IEC 24711 & 24712 Test Suite		
CONTROL PANEL			
LCD SCREEN	2.5" $\alpha$ -TFT colour		
RESOLUTION	161 ppi		
COPY SPEED			
BLACK TEXT MEMO (A4)	Approx. 38 cpm (Draft)		
COLOUR TEXT MEMO (A4)	Approx. 38 cpm (Draft)		
REDUCTION/ENLARGEMENT	Auto Fit Function		
COPY MODES	Standard copy mode / Borderfree		
SCAN TECHNOLOGY			
SCANNER TYPE	A4 Flatbed colour image scanner		
SENSOR TYPE	CIS		
OPTICAL RESOLUTION	2400 X 2400 dpi		
BIT DEPTH	Colour: Input 48bit/Output 24bit Black & White: Grayscale: Input 14bit/Output 8bit		
SCANNING SPEED			
MONOCHROME	A4 300dpi Approx. 1.1 mSec/line		
COLOUR	A4 300dpi Approx. 3.2mSec/line		
MONOCHROME	A4 600dpi Approx. 2.0 mSec/line		
COLOUR	A4 600dpi Approx. 3.8 mSec/line		
MONOCHROME	A4 1200dpi Approx. 3.8 mSec/line		
COLOUR	A4 1200dpi Approx. 11.2 mSec/line		
FAX FUNCTION	Walk-up black-and-white and color fax capability		
TYPE OF FAX	Up to 33.6Kbps		
FAX SPEED	Standard (200x100), Fine (200x200), Photo (200x200 with error diffusion)		
FAX RESOLUTION	COTI/TU Group3 fax with Error Correction Mode.		
ERROR CORRECTION MODE	60 Names & Numbers		
FAX SPEED DIALS (MAX)	Page memory up to 180 pages (ITU-T No.1 chart)		
PAGE MEMORY	Approx. 3sec/page		
FAX TRANSMISSION SPEED			
CARD SLOT FUNCTION			
BUILT-IN SLOT	CF Type II, Memory Stick, SD/MMC, xD-Picture card		
SUPPORTS MEMORY CARDS	Compact Flash (Memory card only), MicroDrive, Memory Stick, Memory Stick Duo (With Adapter) MagicGate Memory Stick, MagicGate Memory Stick Duo (With Adapter), Memory Stick PRO, Memory Stick PRO Duo (With Adapter), SD, SDHC, MiniSD (With Adapter), MiniSDHC (With Adapter), MicroSD (With Adapter), MicroSDHC (With Adapter), Multi Media Card, xD-Picture card, xD-Picture card Type M, xD-Picture card Type L		
card Type-H			
FILE FORMAT	JPEG (Exif ver 2.1) - DCF version 1.0/2.0, DPOF Compliant		
AUTO DOCUMENT FEEDER FUNCTION			
MAXIMUM DOCUMENT SIZE	A4, US Letter, Legal size		
SUPPORT PAPER TYPE	Only support Plain Paper		
SUPPORT PAPER THICKNESS	60-95g/m <sup>2</sup>		
MAXIMUM NUMBER OF ORIGINAL	30pages (Xerox-F 64g/m <sup>2</sup> ) or 3 mm (Letter, A4) / 10 sheets (Legal)		
INTERFACE			
USB	USB - Compatible with the USB 2.0 Specification <sup>1</sup>		
WIRELESS	WiFi 802.11b/g		
ETHERNET	10 Base-T, 100 Base-TX		
PAPER HANDLING			
PAPER FEED METHOD	Friction feed		
PAPER HOLD CAPACITY	Input capacity: 120 sheets, A4 Plain paper (64g/m <sup>2</sup> )		
PAPER SIZE (Epson/CIS/MEA/Asia)	A4, Letter, Legal, 13x18cm(5x7"), 10x15cm(4x6"), 9x13cm(3.5x5"), 13x20cm(5x8"), 20x25cm(8x10"), A5, B5, Envelopes: No.10, DL, C6		
PRINT MARGIN	0mm top, left, right, bottom via custom settings in printer driver. Otherwise 3mm top, left, right, bottom.		
INPUT DATA BUFFER	64KB		
COLOUR MATCHING	ICM Profiles (Windows), AdobeRGB (Windows and Mac), ColorSync 2.0 Compatible (Mac)		
NOISE LEVEL	5.28, 3.98(A) Measurement: according to ISO7779 Pattern with PGP/Photo RPM mode, Calculation: according to ISO2926		
ELECTRICAL SPECIFICATIONS			
RATED VOLTAGE	220 - 240V (will vary depending on area)		
RATED FREQUENCY	50-60 Hz		
POWER CONSUMPTION	Approx. 20W (Standalone printing, ISO10561 Letter Pattern) Approx. 5.5W (Sleep Mode), ENERGY STAR rating		
PRINTER SOFTWARE ON CD-ROM			
PRINTER DRIVERS	Windows 2000/XP/XP x64 Edition/ Vista Mac OS 10.3.9 or 10.4.X or 10.5.X		
ON-LINE GUIDE	Yes		
EPSON SPECIALTY MEDIA (with its suggested applications)			
Media Type	Order Code	Media Type	Order Code
PHOTO QUALITY INK JET PAPER - A4	C135041786	PREMIUM GLOSSY PHOTO PAPER - A4	C135041285
MATTE PAPER HEAVY WEIGHT - A4	C135041259	PREMIUM GLOSSY PHOTO PAPER - 10X15CM/4X6"	C135041863
PREMIUM SEMI-GLOSS PHOTO PAPER - A4,	C135041332	GLOSSY PHOTO PAPER - A4	C135042071
		GLOSSY PHOTO PAPER - 10X15CM/4X6"	C135042070

**EPSON®**  
EXCEED YOUR VISION